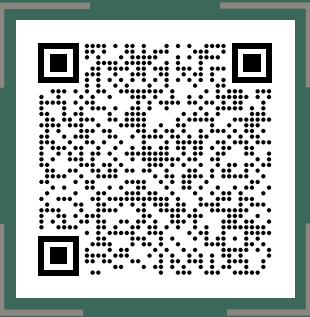
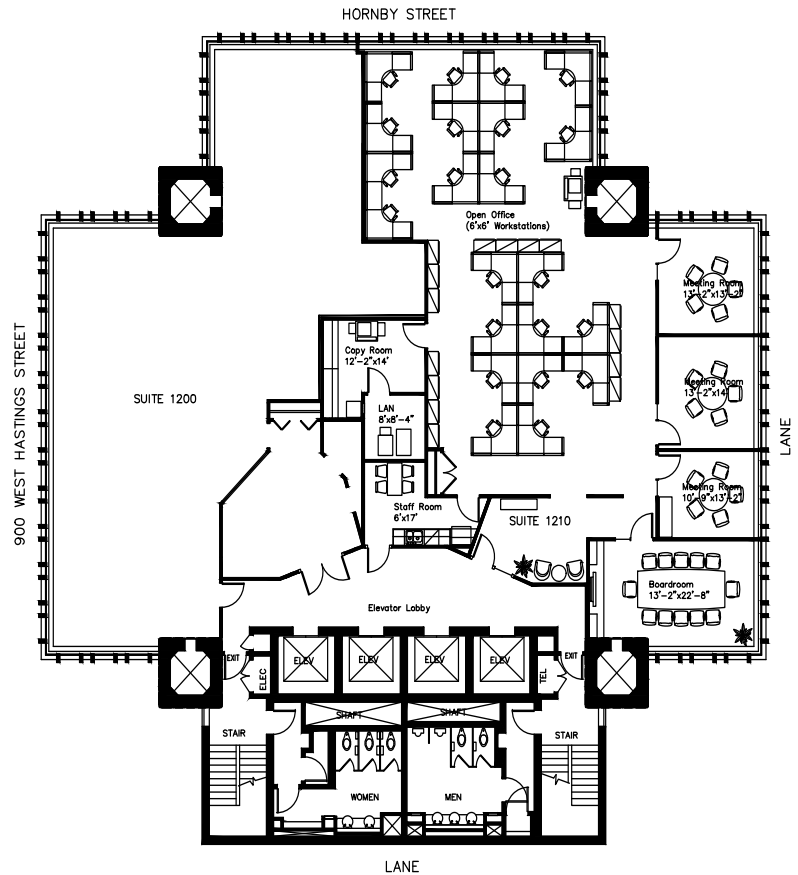




SCAN FOR BROCHURE



Unit	1210
Area	4,276 SF (approx.)
Availability	October 1st, 2025
Term Expiry	Flexible
Basic Rent	Contact listing agent
Additional Rent	\$21.52 PSFPA (2026 est.)



FOR MORE INFORMATION, PLEASE CONTACT:



**Jocelyne Legal**  
 Personal Real Estate Corporation  
**EXECUTIVE VICE PRESIDENT**  
 +1 604 931 5021  
 jlegal@floorspace.ca

THIS DOCUMENT HAS BEEN PREPARED BY FLOORSPACE COMMERCIAL INC. FOR ADVERTISING AND GENERAL INFORMATION ONLY. ALL INFORMATION CONTAINED HEREIN IS FROM SOURCES WE DEEM RELIABLE, AND WE HAVE NO REASON TO DOUBT ITS ACCURACY; HOWEVER, NO GUARANTEE OR RESPONSIBILITY IS ASSUMED THEREOF, AND IT SHALL NOT FORM ANY PART OF FUTURE CONTRACTS. PROPERTY INFORMATION IS SUBMITTED SUBJECT TO ERRORS AND OMISSIONS AND ALL INFORMATION SHOULD BE CAREFULLY VERIFIED. ANY INTERESTED PARTY SHOULD UNDERTAKE THEIR OWN INQUIRIES AS TO THE ACCURACY OF THE INFORMATION. ALL MEASUREMENTS QUOTED HEREIN ARE APPROXIMATE. THIS PUBLICATION IS THE COPYRIGHTED PROPERTY OF FLOORSPACE COMMERCIAL INC. AND/OR ITS LICENSOR(S). COPYRIGHT © 2025 FLOORSPACE COMMERCIAL INC.