

FOR LEASE

1121 William Street

Vancouver, BC



Darren Starek

Senior Vice President
Industrial Properties
darren.starek@cbre.com
+1 604 662 5175

Ed Ferreira

Personal Real Estate Corporation
Senior Vice President
Industrial Properties
ed.ferreira@cbre.com
+1 604 662 5122

Jordan Coulter

Associate Vice President
Industrial Properties
jordan.coulter@cbre.com
+1 604 662 5574

Owned & Managed By

Beedie/

Marketed By

CBRE

FOR LEASE

1121 William Street, Vancouver

CBRE Limited, in partnership with Beedie, are pleased to present the opportunity to lease a 45,177 SF warehouse facility, ideally located in Vancouver's prime Strathcona district. The available premises features **7,287 SF of professionally upgraded air conditioned office/showroom area** including open plan office, showroom, boardroom and lunchroom with ample natural light, offering a turnkey solution for both administrative and client facing operations. **The efficient warehouse area totals 37,890 SF featuring 24'6" ceiling heights, 2 primary dock doors with 85' loading court and 2 supplemental loading doors** on the west side of the premises ensuring efficient routine shipping and receiving. With 15 secured covered parking stalls and excellent access to major traffic arteries via Powell Street and Clark Drive, this location provides unparalleled connectivity and convenience for businesses.



AVAILABLE AREA

Office/Showroom Area: 7,287 SF
Warehouse Area: 37,890 SF
Total: 45,177 SF



ZONING

I-2



TAXES & OP COSTS

\$5.38 PSF (2026 est.)
plus 5% management fee



AVAILABILITY

Contact listing agents

LEASE RATE

\$14.95 PSF, triple net

BUILDING FEATURES



OFFICE AREA

7,287 SF of professionally upgraded air conditioned office featuring open plan showroom/office, boardrooms, 3 private offices and kitchen area



LOADING

2 dock loading doors with 85' loading court depth, 1 ramped grade door, 1 dock loading door



POWER

3 phase, 4 wire, 200 amp, 347/600 volt



COLUMN SPACING

36' x 40'



CEILING HEIGHTS

24'6" clear



SPRINKLERS

Fully sprinklered with wet pipe system



FLOOR LOAD

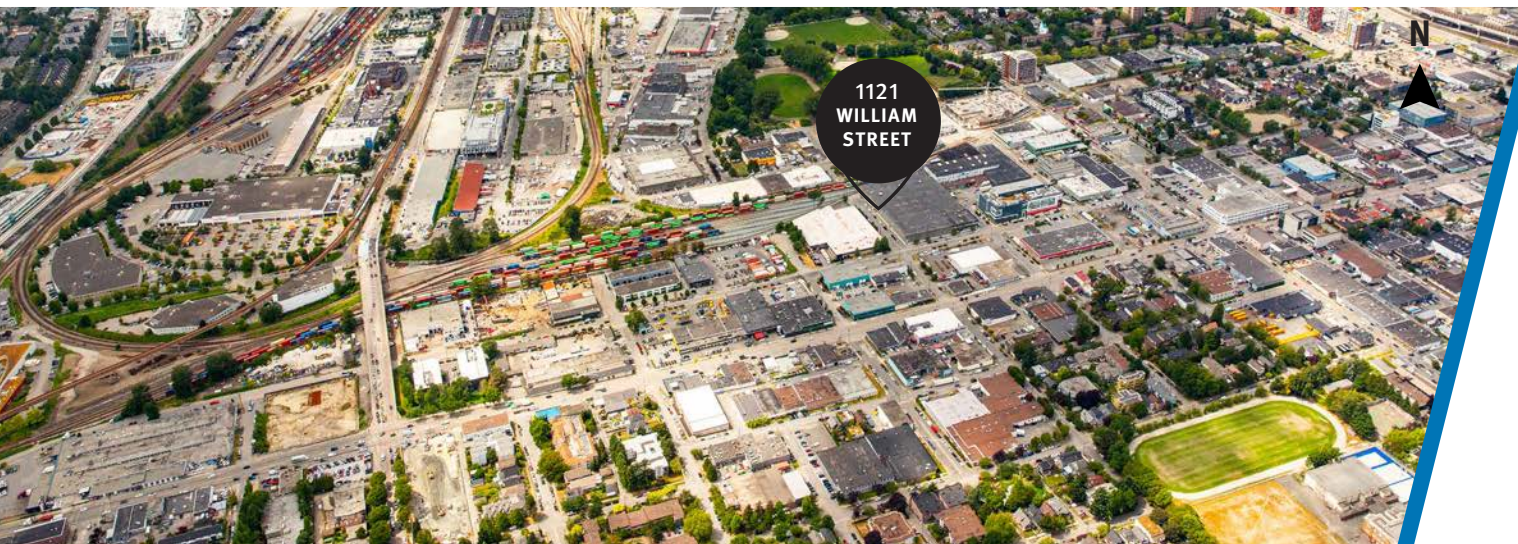
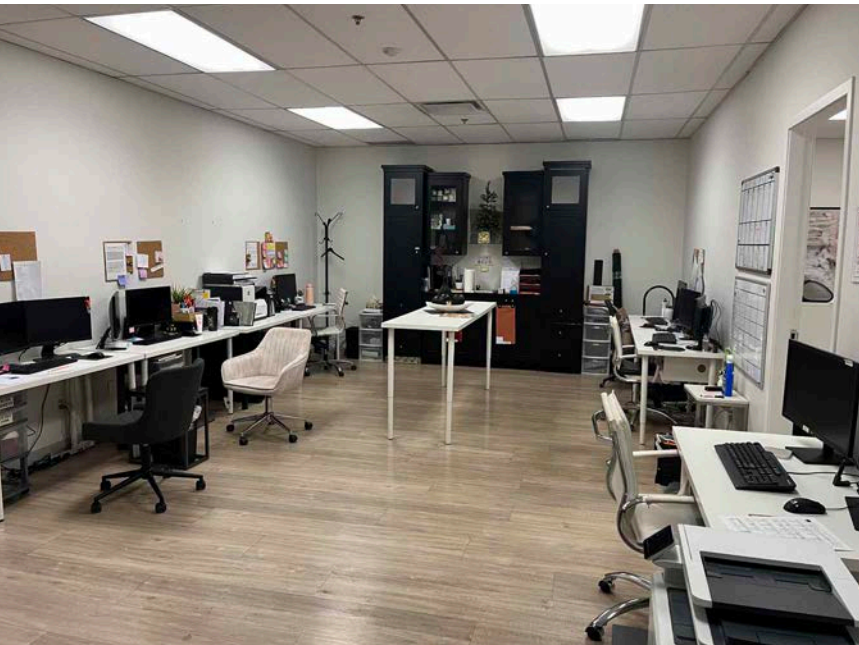
Live load 250 LB/SF
Dead load 75 LB/SF
Total 325 LB/SF



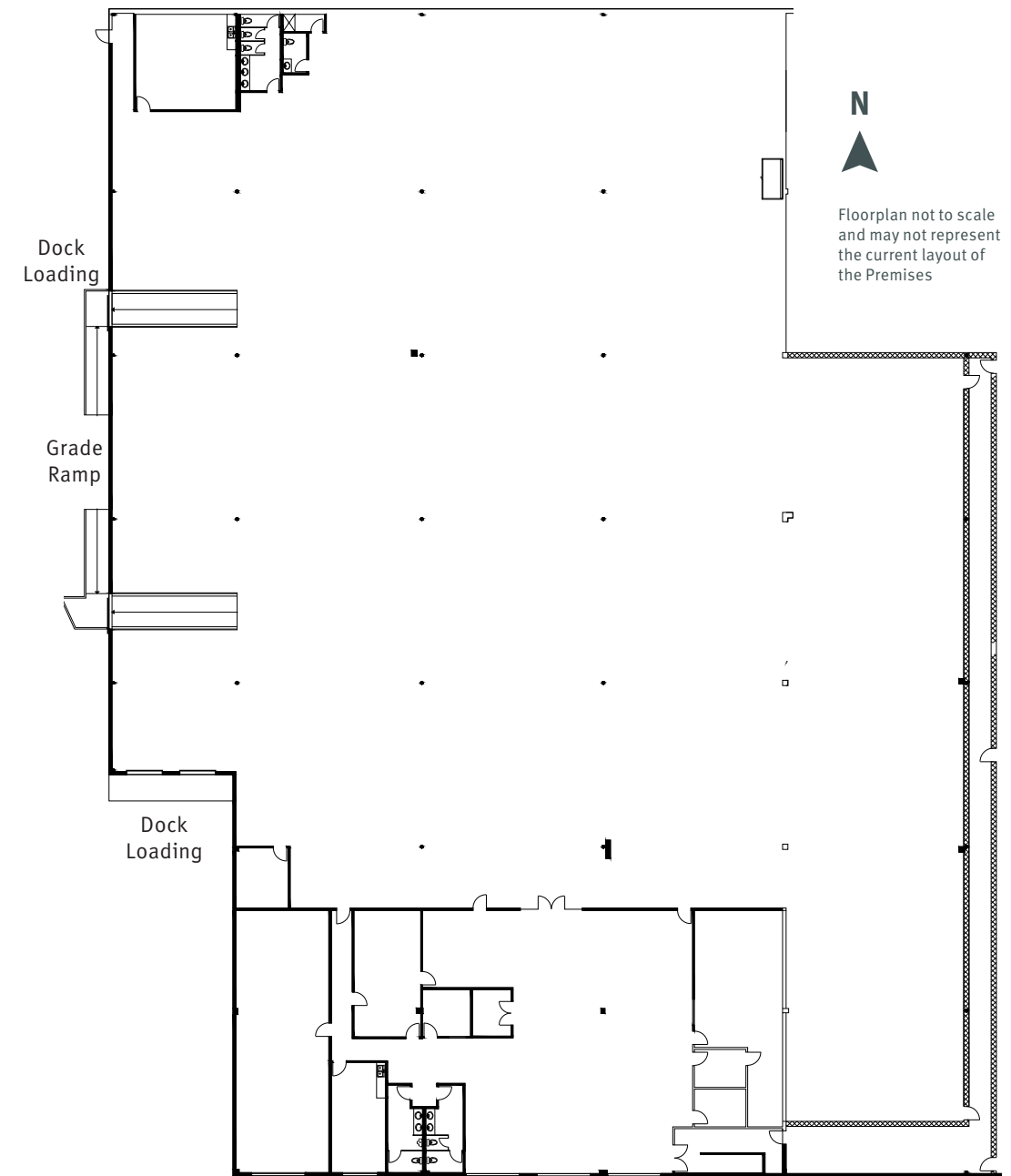
PARKING

15 secured and covered parking stalls

FOR LEASE
1121 William Street, Vancouver



FLOORPLAN



WILLIAM STREET



FOR LEASE | 1121 William Street, Vancouver

UBC
28-MIN DRIVE

DOWNTOWN
10-MIN DRIVE

PORT OF VANCOUVER
7-MIN DRIVE

GASTOWN
5-MIN DRIVE

MT. PLEASANT
9-MIN DRIVE

ST. PAUL'S HOSPITAL

STRATHCONA PARK

TESLA SERVICE CENTRE

ARTICLE HEAD OFFICE

1121 WILLIAM STREET

PARKER STREET STUDIOS

PRECISION NANOSYSTEMS

ABOUT THE OWNER & PROPERTY MANAGER

Beedie

Since 1954, Beedie has combined innovation and craftsmanship to bring new possibilities to life. Today, Beedie is one of Western Canada's largest industrial developers and property managers, having completed more than 35 million square feet of new development. With an ever-expanding industrial portfolio of nearly 16 million square feet of leasable space across British Columbia and Alberta, along with substantial involvement in the retail and residential market sectors, Beedie's philosophy of providing proactive asset management is based on providing each of their valued clients with optimal service and support.

As Beedie grows its operations across North America, they have industrial building opportunities available in British Columbia, Alberta, Ontario, and Las Vegas, Nevada.

1121 William Street is strategically positioned in the Strathcona submarket, one of Vancouver's most established inner city industrial hubs. Located just off Clark Drive, the property benefits from unmatched access to major transportation arteries, transit and Port of Vancouver infrastructure. Businesses will enjoy the ability to reach Downtown in less than 10 minutes, connect easily to the North Shore, Burnaby and highways connecting the rest of Metro Vancouver and operate in a neighbourhood known for its dynamic mix of industrial, creative and service oriented uses.

FOR LEASE

1121 William Street

Vancouver, BC



Darren Starek

Senior Vice President
Industrial Properties
darren.starek@cbre.com
+1 604 662 5175

Ed Ferreira

Personal Real Estate Corporation

Senior Vice President
Industrial Properties
ed.ferreira@cbre.com
+1 604 662 5122

Jordan Coulter

Associate Vice President
Industrial Properties
jordan.coulter@cbre.com
+1 604 662 5574

CBRE

This disclaimer shall apply to CBRE Limited, Real Estate Brokerage, and to all other divisions of the Corporation; to include all employees and independent contractors ("CBRE"). All references to CBRE Limited herein shall be deemed to include CBRE, Inc. The information set out herein, including, without limitation, any projections, images, opinions, assumptions and estimates obtained from third parties (the "Information") has not been verified by CBRE, and CBRE does not represent, warrant or guarantee the accuracy, correctness and completeness of the Information. CBRE does not accept or assume any responsibility or liability, direct or consequential, for the Information or the recipient's reliance upon the Information. The recipient of the Information should take such steps as the recipient may deem necessary to verify the Information prior to placing any reliance upon the Information. The Information may change and any property described in the Information may be withdrawn from the market at any time without notice or obligation to the recipient from CBRE. CBRE and the CBRE logo are the service marks of CBRE Limited and/or its affiliated or related companies in other countries. All other marks displayed on this document are the property of their respective owners. All Rights Reserved.

Mapping Sources: Canadian Mapping Services canadamapping@cbre.com; DMTI Spatial, EnviroNics Analytics, Microsoft Bing, Google Earth