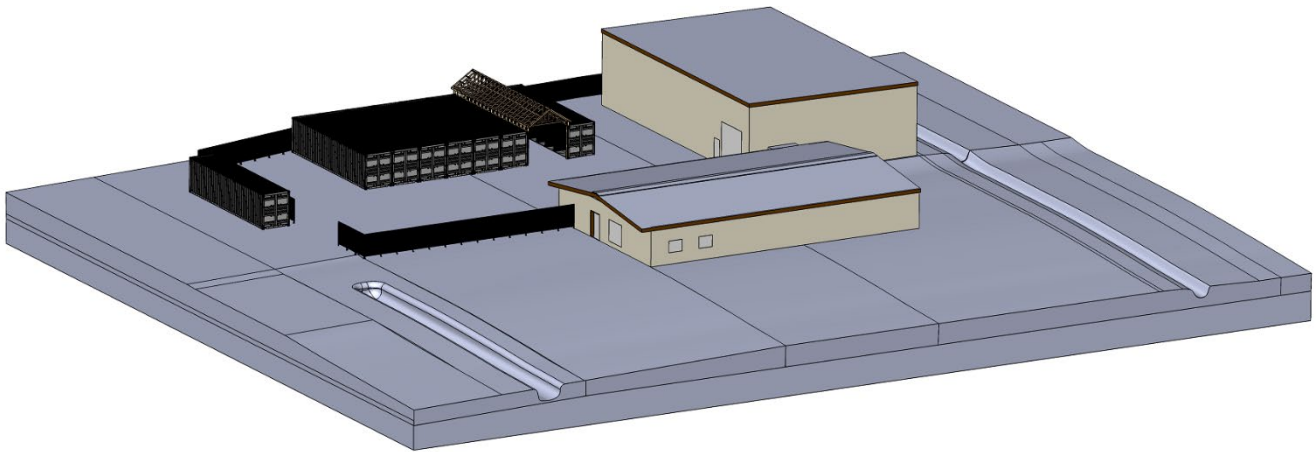


**10 Watertower Road
Saint John, NB
E2M 7K2
(Spruce Lake Industrial Park)**



Building 1 50' x 80' (4,000 ft²)

Reception with workstations (2) , Front Offices (4) , Washrooms (2), Kitchen and Lunchroom
1,500 ft²

Parts Shop with storage rooms (2) , Offices / Storage rooms (5) , open low overhead storage
2,500 ft²

Building 2 50' x 80' (4,000 ft²)

Open Warehouse

Yard 100' x 150' (15,000 ft²)

Paved and Fenced



Entrance and Partially Paved Parking Area



Entrance to Offices and Parts Shop in Building 1 (50' x 80')



Entry Vestibule and Reception Area



Reception Area with 2 Workstations



Office 1 - Front



Office 2 - Front



Office 3 - Front



Office 4 - Front



Washroom 1 – Reception Area



Lunchroom adjacent to Front Offices



Kitchen



Washroom 2



Parts Shop at rear of Building 1 with 5 Offices



2 of the 5 Offices in the Parts Shop area that could be converted to a large Meeting Room



Parts Shop Offices



Example of finishes in the Parts Shop offices



Connected Warehouse Building 2 (50' x 80')



Overhead Door – 14' wide by 12' tall



View of Entry to Building 1



Paved and Fenced Yard



Building 1 and 2 from Entry Gate to Paved Yard