

FOR SALE

**/ OFFICE
/ LIGHT INDUSTRIAL
/ RESEARCH
/ SHOWROOM**



**TWO FLOORS OF QUALITY SPACE IN
THE HEART OF NORTH BURNABY**



**#101 - 2544 DOUGLAS
ROAD, BURNABY, BC**

CONTACT

ALAIN RIVÈRE

Personal Real Estate Corporation
Senior Vice President, The HTFG
604 662 5110
alain.rivere@cbre.com

ANDRE ALIE DAY

Personal Real Estate Corporation
Senior Associate, The HTFG
604 662 5137
andre.alieday@cbre.com



THE HIGH
TECHNOLOGY
FACILITIES GROUP





/ THE OPPORTUNITY

2544 Douglas Road is a rare owner-user opportunity that caters to a wide range of purchasers. It is the corner strata lot that is part of a 99,874 SF building and is currently used as an office, research or showroom. The space has quality improvements over two floors with street front exposure.

The property is centrally located in Burnaby with easy access to Trans Canada Highway and Lougheed Highway. It is also approximately 400m to Holdom SkyTrain Station (within walking distance) and next to the Central Valley Greenway bike lane.

/ PROPERTY DETAILS

UNIT	101	
	Main Level	1,471 SF
	Second Level	1,491 SF
AREA	Total	2,962 SF
OWNERSHIP	Strata	
AVAILABILITY	Vacant, 30 days notice	
FURNITURE	Available	
ZONING	M2 & M1 – Allows for a wide range of Light Industrial uses	
YEAR BUILT	1978	
PARKING	5 stalls included	
STRATA FEES (2026)	\$908.59 + GST	
PROPERTY TAXES (2025)	\$12,992.20 (\$4.38 PSF)	
SALE PRICE	\$1,599,000	
NEW PRICE	\$1,399,000	



/ FLOOR PLANS*



Multiple open plan areas with flexible design



Meeting room, sound room, and kitchen



Windows on three sides



HVAC throughout

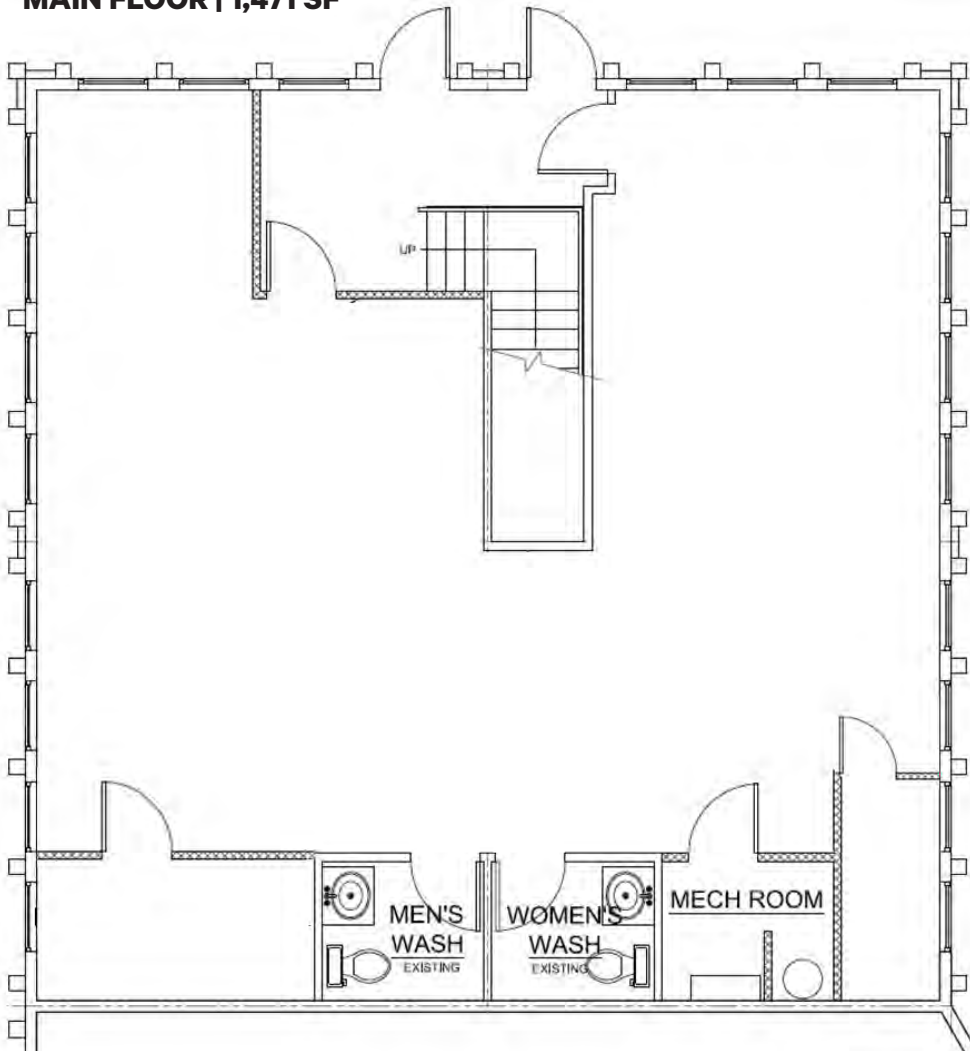


2 washrooms on each floor (4 total)

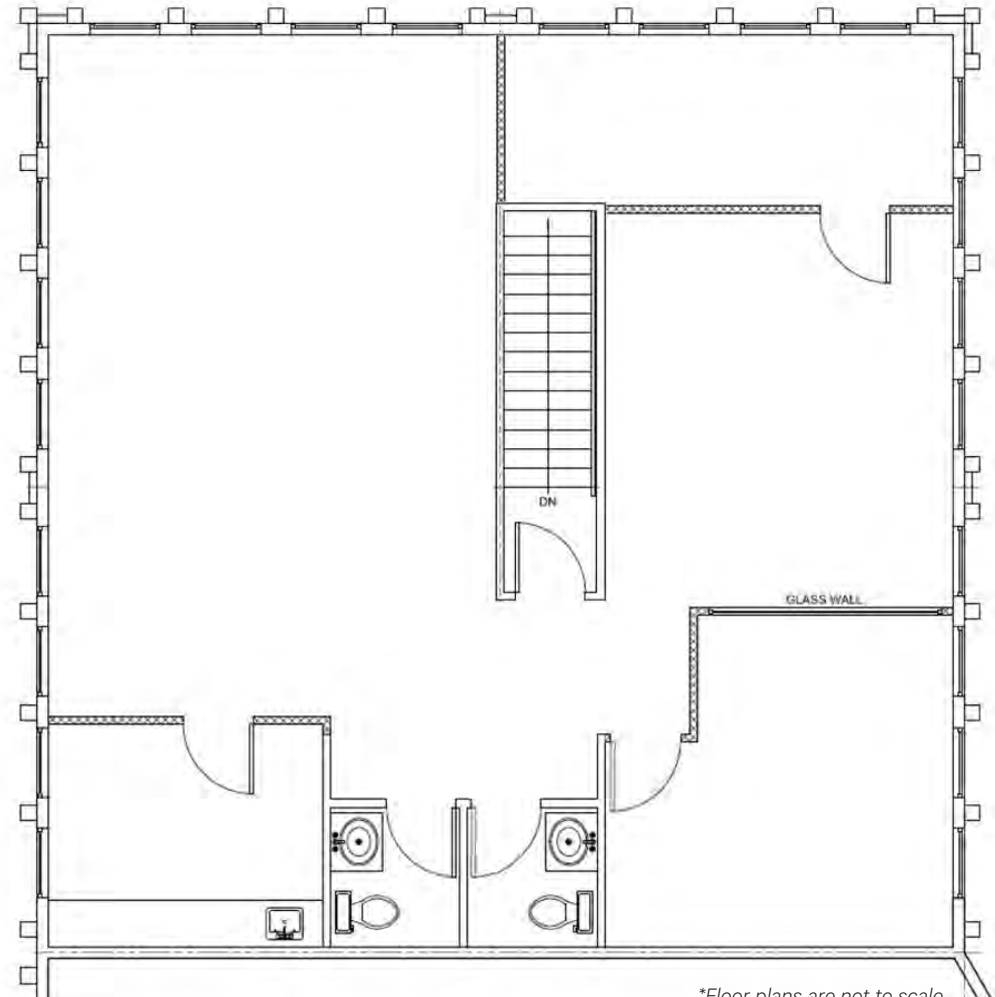


Great natural light and mountain views from second floor

MAIN FLOOR | 1,471 SF



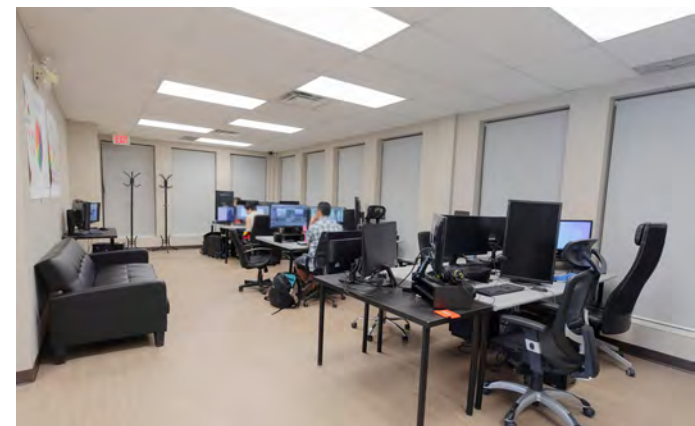
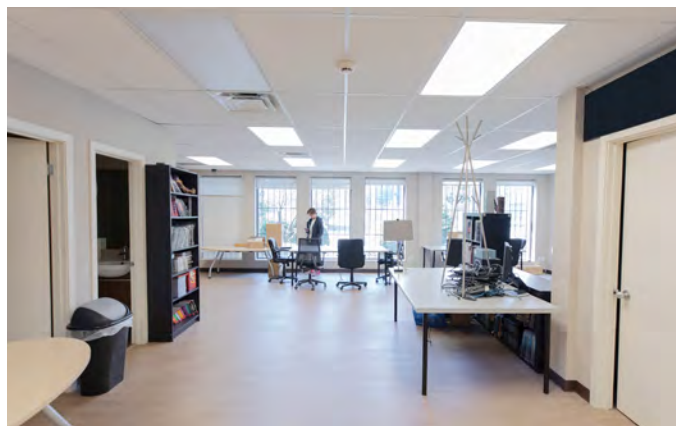
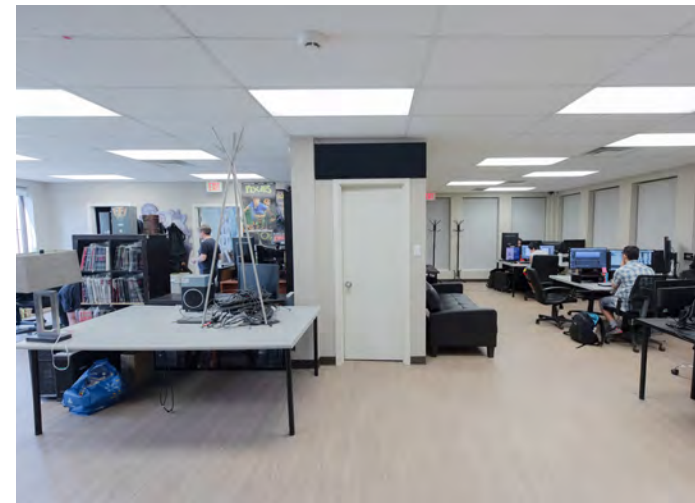
SECOND FLOOR | 1,491 SF



*Floor plans are not to scale.



FOR SALE / #101 - 2544 DOUGLAS ROAD





THE LOCATION

Located near the intersection of Douglas Road & Still Creek Avenue and between Lougheed Highway and Trans Canada Highway. This strategic location provides easy access to major highways, making it convenient for commuting and quick access to all major municipalities.

The location is within walking distance to the Holdom SkyTrain Station plus multiple bus lines (#129, 133, 136, N9). The property is only a 5-minute drive, or one Skytrain stop away, to the newly redeveloped The Amazing Brentwood where you can find an abundance of amenities and stores.

NEIGHBOURHOOD STATS 4 KM RADIUS



185
RESTAURANTS



83
CAFÉS



115
RETAIL & SERVICES



22
FITNESS FACILITIES

CONTACT

ALAIN RIVÈRE

Personal Real Estate Corporation
Senior Vice President, The HTFG
604 662 5110
alain.rivere@cbre.com

ANDRE ALIE DAY

Personal Real Estate Corporation
Senior Associate, The HTFG
604 662 5137
andre.alieday@cbre.com



THE HIGH
TECHNOLOGY
FACILITIES GROUP



This disclaimer shall apply to CBRE Limited, Real Estate Brokerage, and to all other divisions of the Corporation; to include all employees and independent contractors ("CBRE"). All references to CBRE Limited herein shall be deemed to include CBRE, Inc. The information set out herein, including, without limitation, any projections, images, opinions, assumptions and estimates obtained from third parties (the "Information") has not been verified by CBRE, and CBRE does not represent, warrant or guarantee the accuracy, correctness and completeness of the Information. CBRE does not accept or assume any responsibility or liability, direct or consequential, for the Information or the recipient's reliance upon the Information. The recipient of the Information should take such steps as the recipient may deem necessary to verify the Information prior to placing any reliance upon the Information. The Information may change and any property described in the Information may be withdrawn from the market at any time without notice or obligation to the recipient from CBRE. CBRE and the CBRE logo are the service marks of CBRE Limited and/or its affiliated or related companies in other countries. All other marks displayed on this document are the property of their respective owners. All Rights Reserved. Mapping Sources: Canadian Mapping Services canadamapping@cbre.com; DMTI Spatial, Environics Analytics, Microsoft Bing, Google Earth.