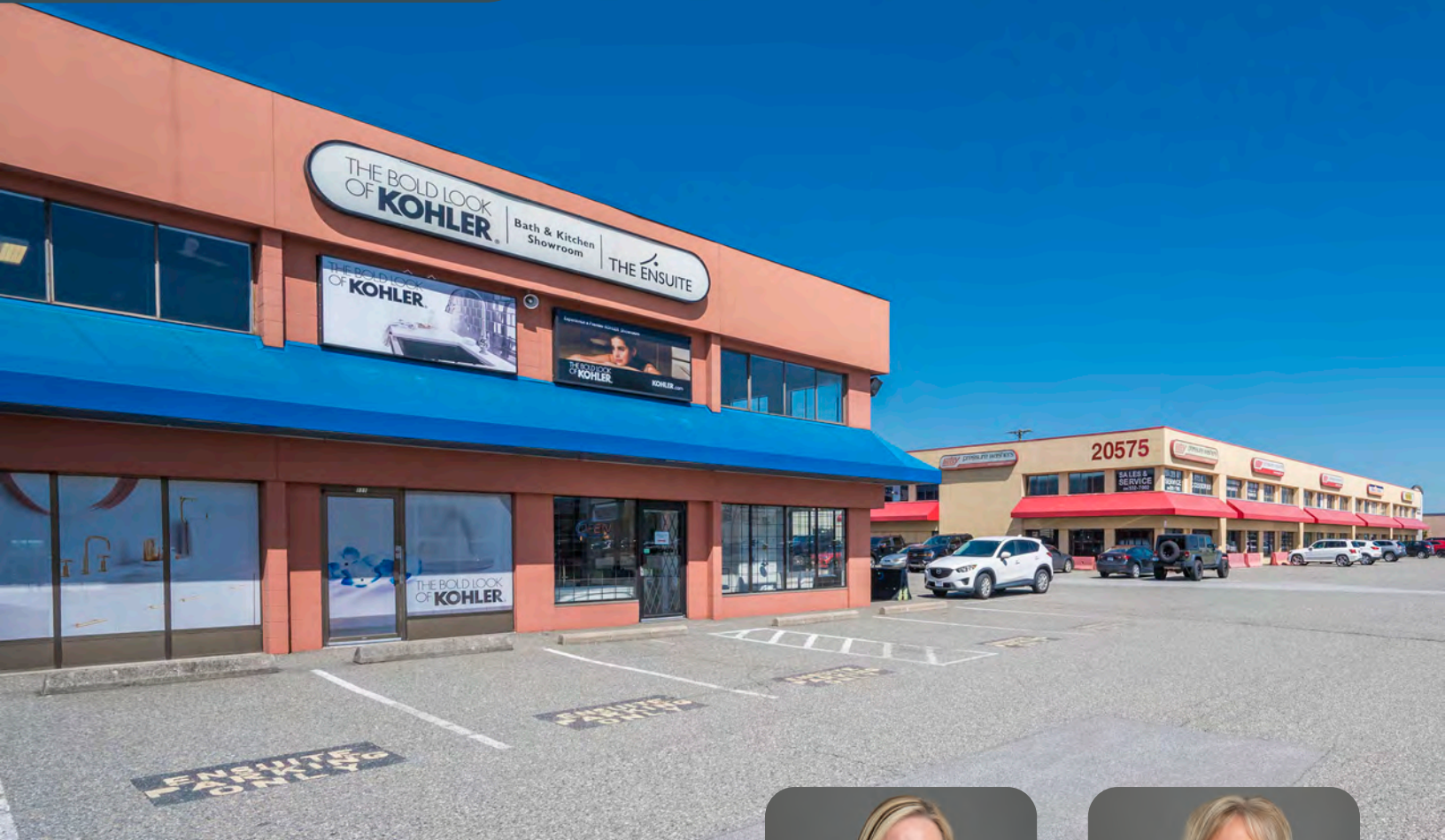


# FOR LEASE

**Benchmark Commercial Centre**  
Unit 107-108 - 20551 Langley Bypass, Langley, BC



Fantastic frontage to Langley Bypass in this 4,008 sq. ft. retail showroom. 2 washrooms, and the rest is open to plan for your needs. Come join the Benchmark Commercial Centre today!



DIRECTOR OF REAL ESTATE  
**Leslie Koole**



PROPERTY MANAGER & LEASING AGENT  
**Hertha Muller**

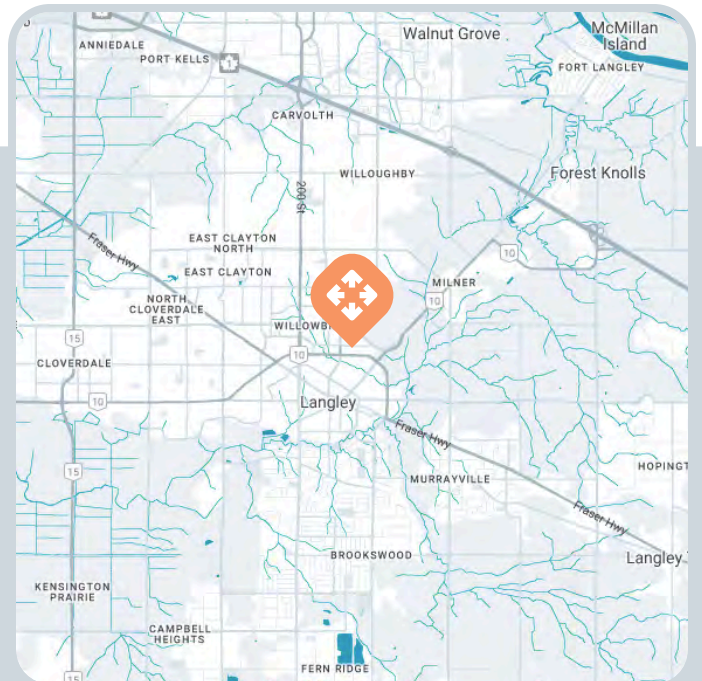
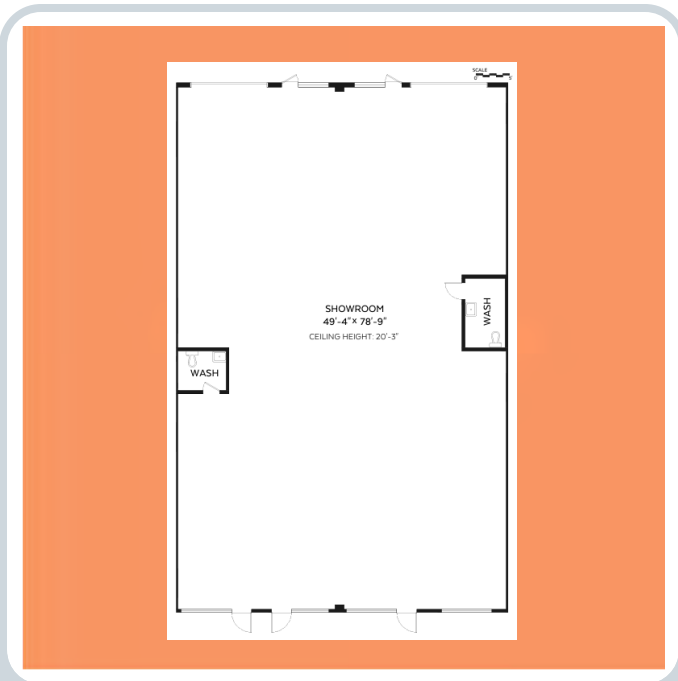


**604.533.1138**  
**leasing@benchmark-group.com**

Contact our leasing team and let's get you the commercial property experience you deserve.

# Benchmark Commercial Centre

Unit 107-108 - 20551 Langley Bypass, Langley, BC



## Unit Size

Showroom - 4,008 sq. ft.

## Amenities

- Mix of Brick Block & Tilt-up Concrete buildings
- Retail and industrial mix
- Grade loading
- 3 phase power
- Overhead heaters in warehouse
- Ample on-site parking
- Excellent property management service by Landlord

## Zoning

C2 Service Commercial

## Location

Situated on the Langley Bypass between 200th and Glover Rd., this well managed complex is in the heart of the retail amenities of Langley. This Commercial and Industrial mixed use property offers showroom frontage and plenty of parking.

## TAKE YOUR PLACE OF BUSINESS TO THE NEXT LEVEL

Contact our leasing team and let's get you the commercial property experience you deserve.

## Lease Rates

Showroom - \$28.00 psf  
Operating Expenses - \$6.16 psf + 5% PM Fee

**604.533.1138**

**[leasing@benchmark-group.com](mailto:leasing@benchmark-group.com)**