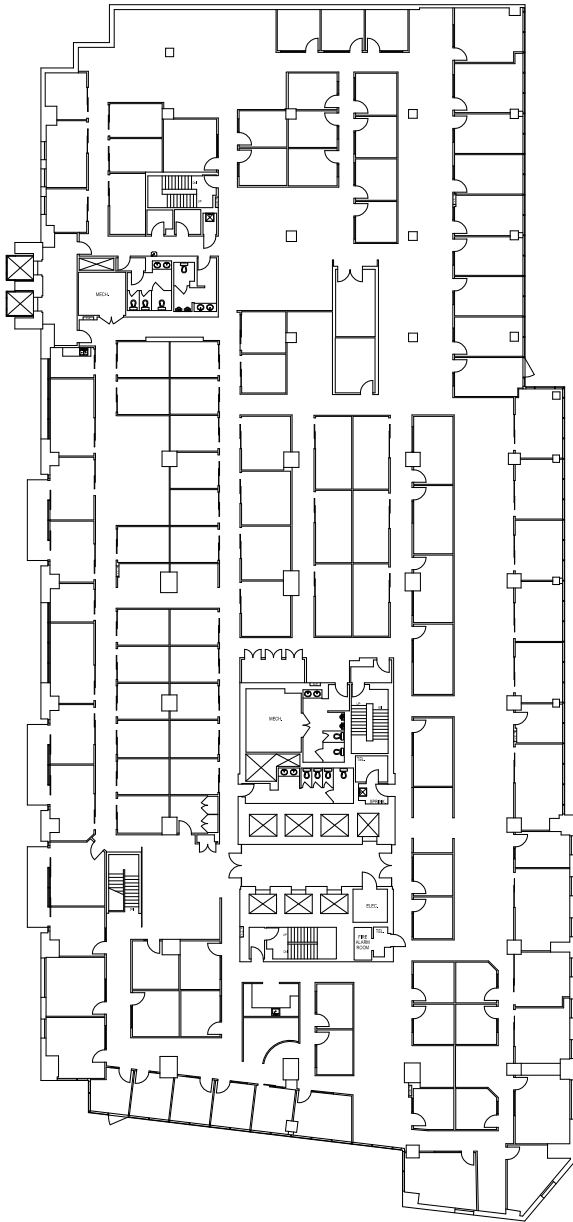


5160 
YONGE STREET

SUITE 300 - 33,621 SQ.FT.
AVAILABLE IMMEDIATELY



- Contiguous with Suite 200/205 (with interconnecting staircase) for a total of 69,064 sq. ft.
- Heavily built out suite featuring double glass door entrance off elevators
- Interior balconies overlooking atrium and secondary elevator bank accessible from atrium