

# SUITE 1300

24,496 SF

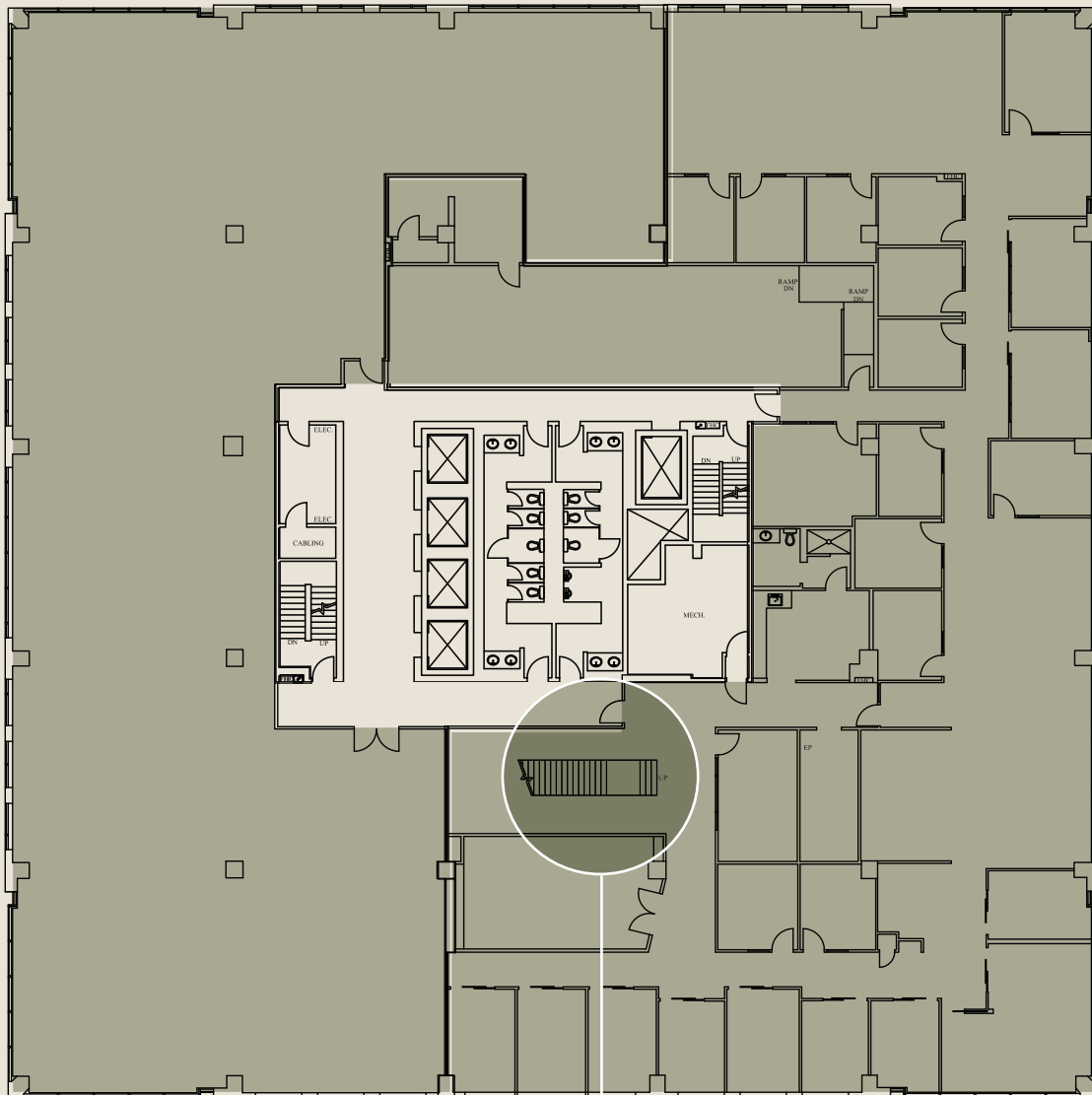
**AVAILABLE** Available Immediately

**COMMENTS**

Floor being brought back to base building condition by April 2026

Connected via internal stairwell to floors 14 & 15

**ADD. RENT** \$29.24 PSF (2026 Est.)



STAIRCASE  
CONNECTED  
TO 1400 & 1500



ONE  
TORONTO