

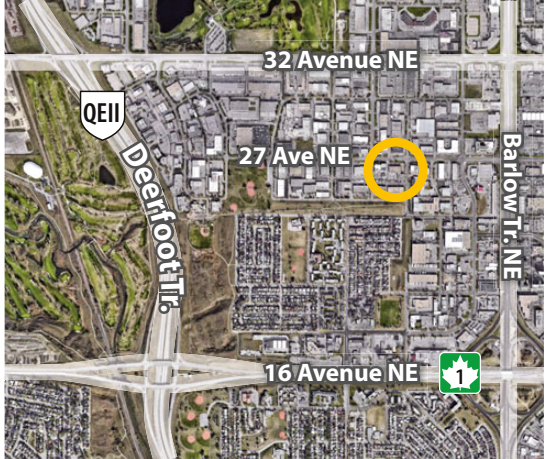


Gross Rent  
**1,200 sf**  
 Suite 13E (2nd fl.)

# OFFICE SPACE FOR LEASE

**THE WINDFIRE**  
 BUILDING  
 2115 27 Avenue NE, Calgary

» Modern professionally maintained and managed building.



FOR MORE  
 INFORMATION OR  
 TO VIEW, PLEASE  
 CONTACT:

**Ian Robertson, ASSOCIATE**  
 d: **587-393-9332**  
 c: **403-860-2383**  
 irobertson@barclaystreet.com



LOCAL  
 EXPERTISE  
 MATTERS

- » Modern professionally maintained and managed building on a tree-lined street with ample dedicated parking.
- » Convenient location with excellent access – close to Airport, Deerfoot Tr. and Barlow Tr.
- » On bus route 32 direct to LRT.
- » Excellent amenities in the area.
- » Boulevard picnic area.
- » Elevator.



*Pylon signage available*



## LEASE INFORMATION

ADDRESS: 2115 27 Avenue NE, Calgary

AVAILABLE FOR LEASE:  
1,200 sq. ft. – Suite 13E (2nd floor)

AVAILABILITY: Immediate

GROSS RENT:  
\$2,200/mo + GST. Utilities included.

### NO CHARGE USE OF:



Boardroom for 8+ with presentation equipment.



Fully equipped service kitchen, with seating for 12.



Bike racks.



Showers, and change rooms.

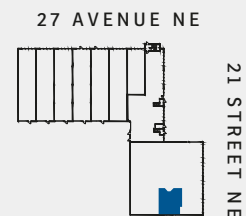
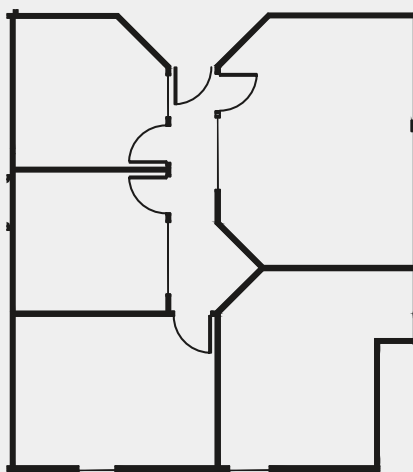


Laundry room.



SUITE 13E (2ND FLOOR) **OFFICE**

**1,200** SQ.FT.



The information contained herein has been gathered from sources deemed reliable, but is not warranted as such and does not form any part of any future contract. This offering may be altered or withdrawn at any time without notice.

Copyright © 2026 Barclay Street Real Estate Ltd. All rights reserved.



LOCAL EXPERTISE MATTERS