



# For Sub-Sublease

555 Robson Street  
Vancouver

7th Floor - 13,672 SF Creative Office Space

**Marcus Keighron**

Personal Real Estate Corporation  
Senior Vice President  
Commercial Properties - Advisory Group

[marcus.keighron@cbre.com](mailto:marcus.keighron@cbre.com)  
604 662 5143

**CBRE**

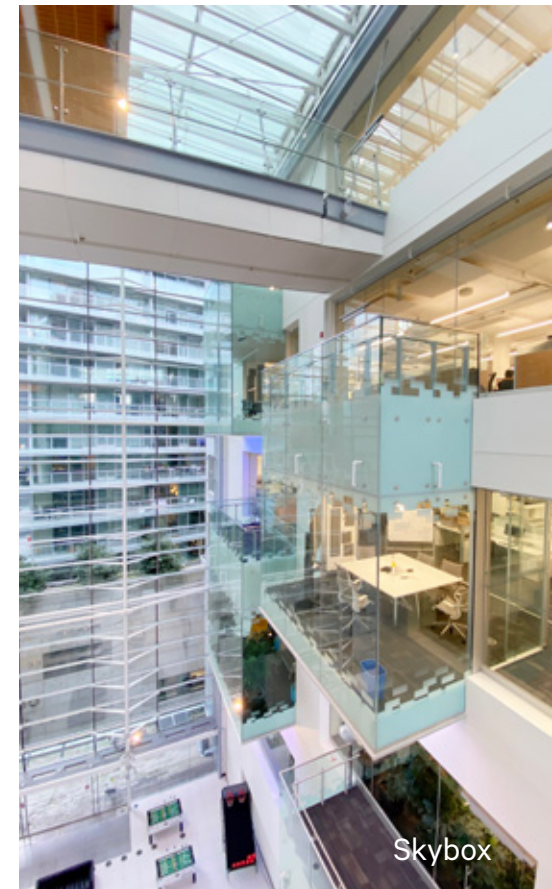
# For Sub-Sublease

7th Floor - 555 Robson Street , Vancouver

Fully improved with a mix of open plan and private offices



Open Work Area



Skybox

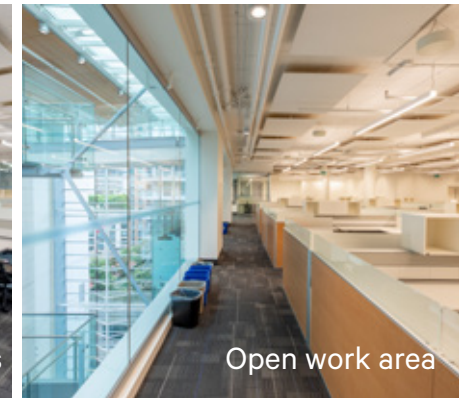


## Suite Details

- 2 meeting rooms plus 1 skybox meeting room overlooking atrium
- 15 private offices
- Open work area with 99 work stations
- 1 large kitchenette
- 11 private washrooms
- 1 balcony that overlooks the atrium
- Direct elevator access into unit
- Stunning views of city scape and glass atrium



Workstations



Open work area



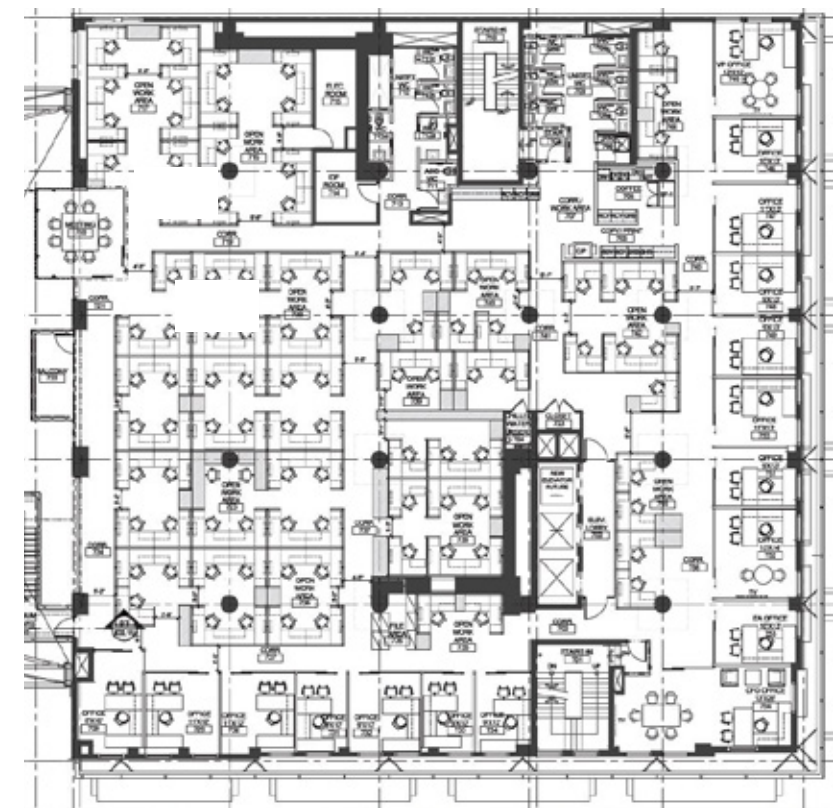
## Property Details

With a magnificent 6-storey atrium, and a living green wall on the east side of the building, 555 Robson has been completely rebuilt to a state-of-the-art structure, with system upgrades, cutting edge interior design, modern atrium, and thoughtful common areas and gathering spaces.

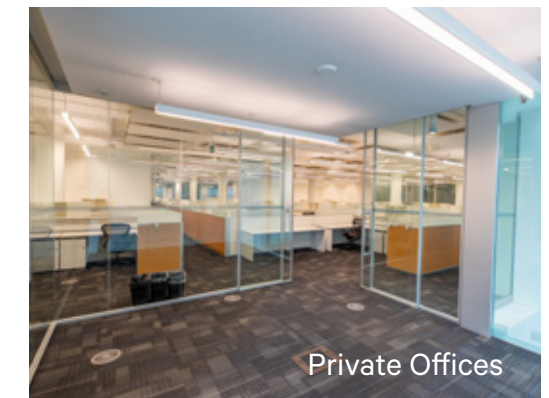
Premises	7th Floor
Area Available	13,672 SF
Sublease Rate	Contact Listing Agent
Op. Costs/Taxes	\$23.15 PSF (2025 est)
Availability	Immediately
Expiry Date	February 28, 2028



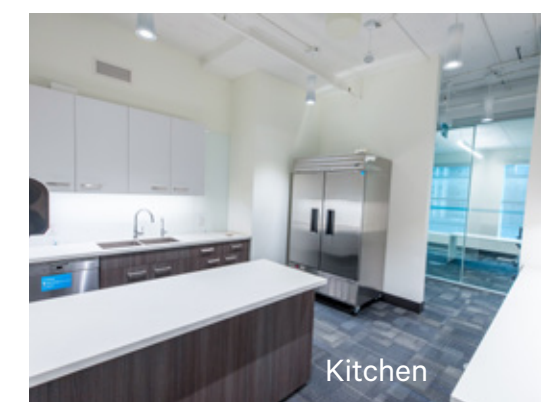
Atrium



Floor plan not to scale.



Private Offices



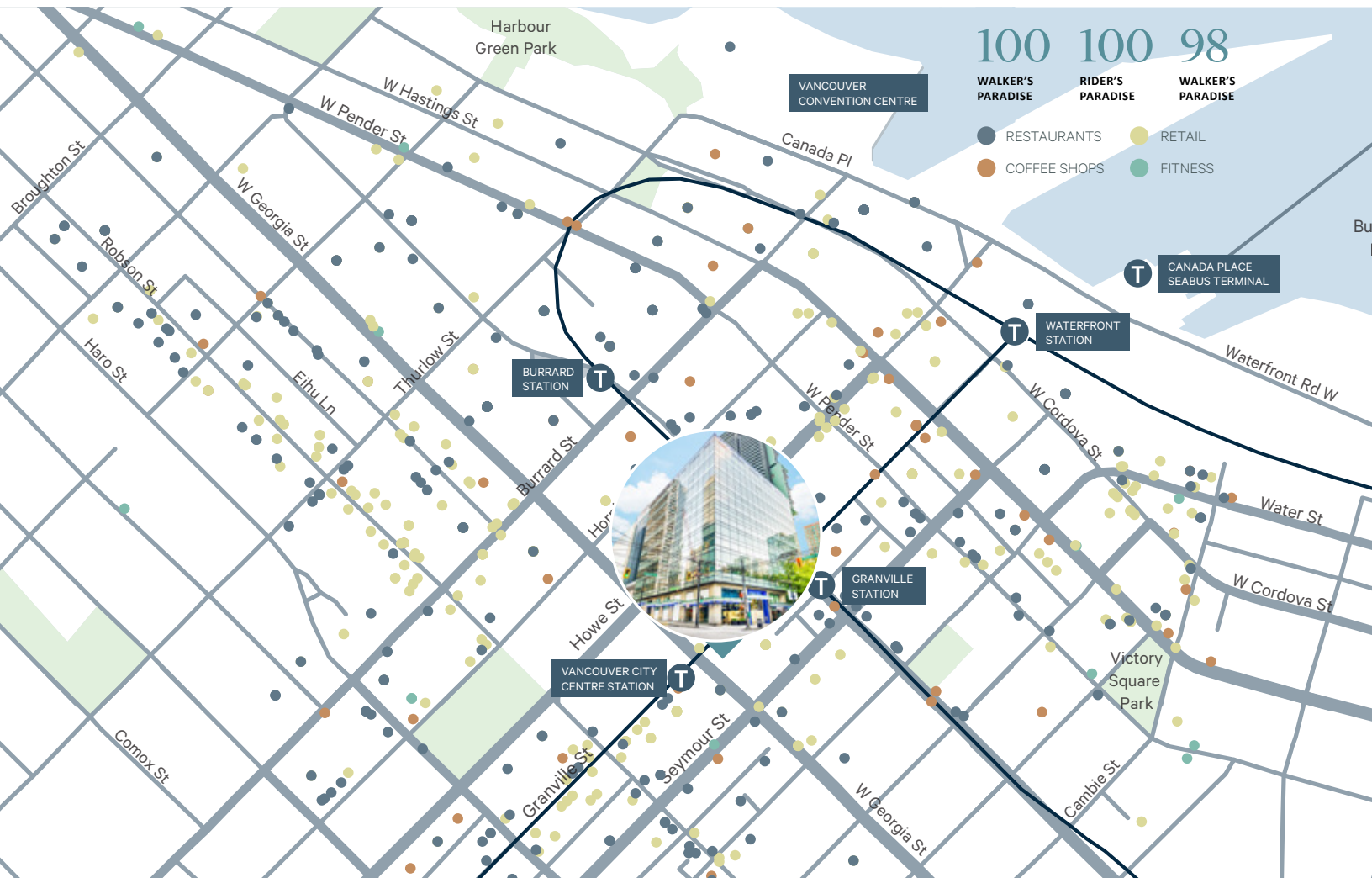
Kitchen

# For Sub-Sublease

7th Floor - 555 Robson Street , Vancouver

## Available immediately

Strategically located at the northeast corner of Robson Street and Seymour Street, 555 Robson Street sits at the gateway to Yaletown's most popular restaurants and amenities. This prime address is surrounded by a dynamic mix of lifestyle offerings, all within immediate walking distance. The building features convenient on-site retailers, including Buro Coffee and Vitasave, a health food and smoothie store located in the lobby. Beyond the building, tenants and visitors enjoy access to a wide variety of shopping, dining, service retail, bars, and fitness facilities. Notably, Pacific Centre Mall—one of the largest shopping centres in North America—and the iconic Robson Street retail corridor are just steps away. With close proximity to both the Canada Line and Expo/Millennium SkyTrain stations, 555 Robson Street offers exceptional transit access and walkability, making it an ideal location for businesses and professionals seeking convenience and connectivity.



### Marcus Keighron

Personal Real Estate Corporation  
Senior Vice President  
Commercial Properties - Advisory Group  
marcus.keighron@cbre.com  
604 662 5143

CBRE Limited | 1021 West Hastings Street #2500 | Vancouver, BC  
www.cbre.ca

This disclaimer shall apply to CBRE Limited, Real Estate Brokerage, and to all other divisions of the Corporation; to include all employees and independent contractors ("CBRE"). The information set out herein, including, without limitation, any projections, images, opinions, assumptions and estimates obtained from third parties (the "Information") has not been verified by CBRE, and CBRE does not represent, warrant or guarantee the accuracy, correctness and completeness of the Information. CBRE does not accept or assume any responsibility or liability, direct or consequential, for the Information or the recipient's reliance upon the Information. The recipient of the Information should take such steps as the recipient may deem necessary to verify the Information prior to placing any reliance upon the Information. The Information may change and any property described in the Information may be withdrawn from the market at any time without notice or obligation to the recipient from CBRE. CBRE and the CBRE logo are the service marks of CBRE Limited and/or its affiliated or related companies in other countries. All other marks displayed on this document are the property of their respective owners. All Rights Reserved.

Mapping Sources: Canadian Mapping Services canadamapping@cbre.com; DMTI Spatial, Environics Analytics, Microsoft Bing, Google Earth.

