 **JLL** SEE A BRIGHTER WAY

For Sublease

Office Space

5723 Marine Way, Burnaby

Cam Bertsch*

Associate Vice President

cam.bertsch@jll.com

+1 604 998 6053

THE LOCATION

Nestled in the heart of Burnaby's prestigious Big Bend node, 5723 Marine Way boasts a prime location adjacent to the Marine Way Market, featuring popular retail amenities such as Starbucks, Cactus Club Café, and White Spot. This strategic location offers unparalleled visibility and access along Marine Way, seamlessly connected to major transport arteries like Highways 1 and 91A. The central location of 5723 Marine Way, with its close proximity to major transportation routes has everything within reach - YVR International Airport is just a 20-minute drive away, while Downtown Vancouver can be accessed in only 30 minutes.

THE SUITE

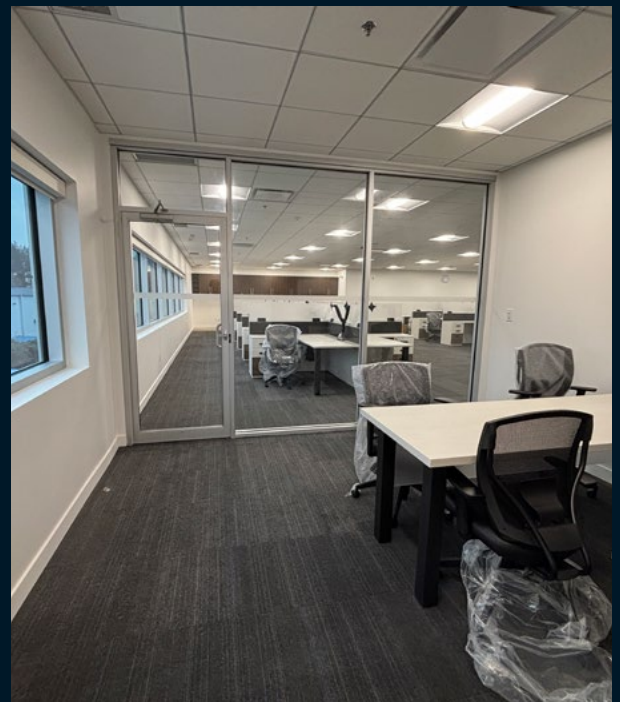
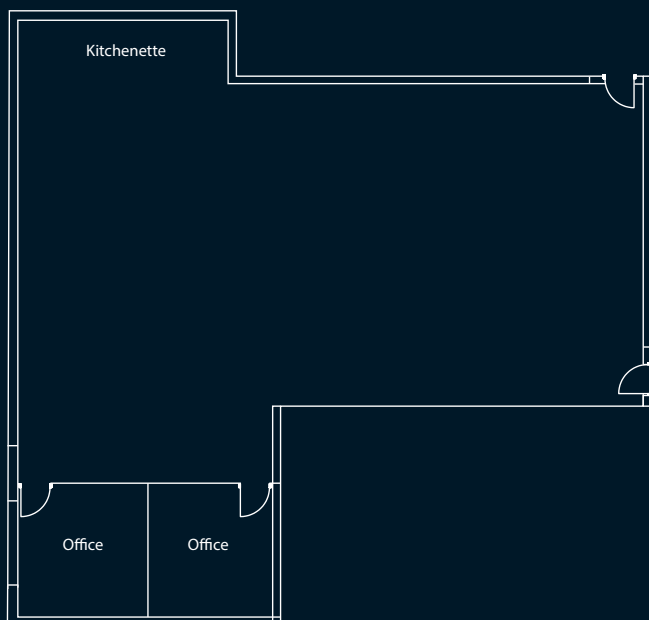
Brand new, never occupied office space with two offices, a kitchenette, and primarily open plan area.

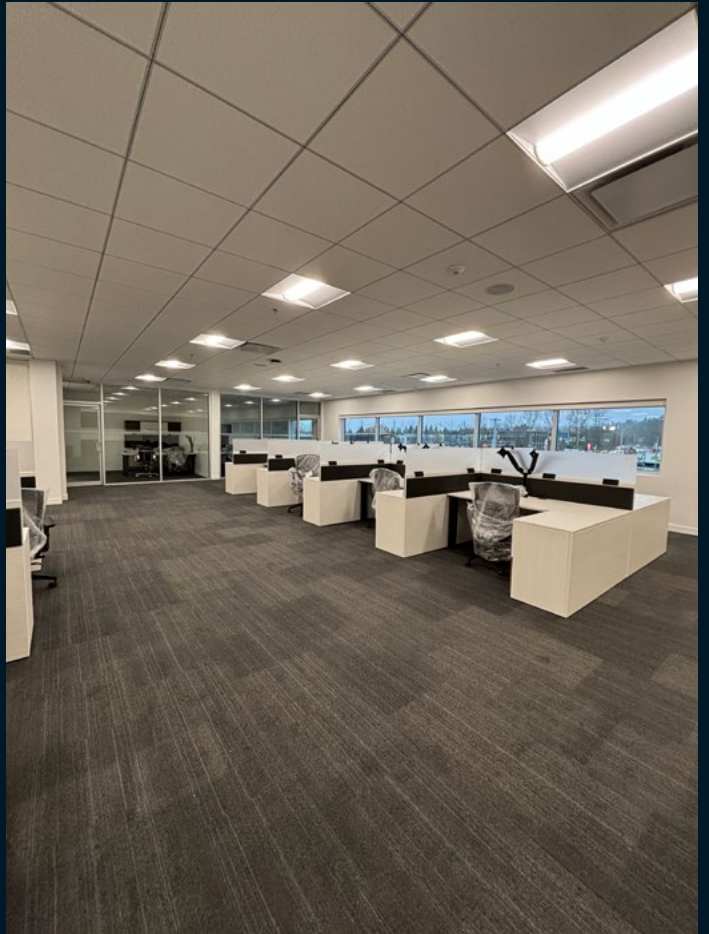
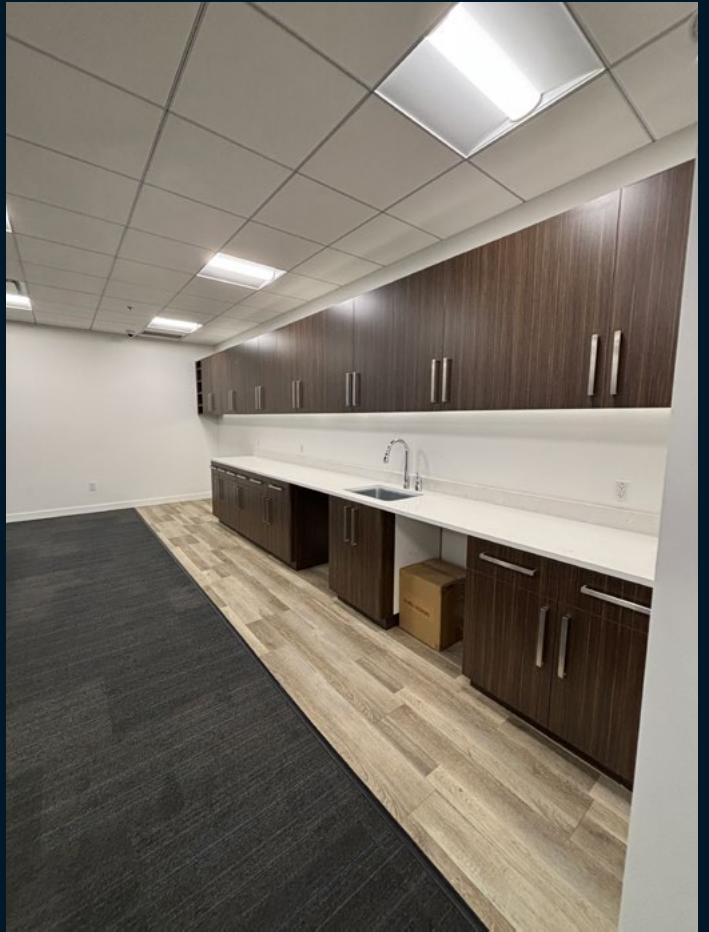
SALIENT DETAILS

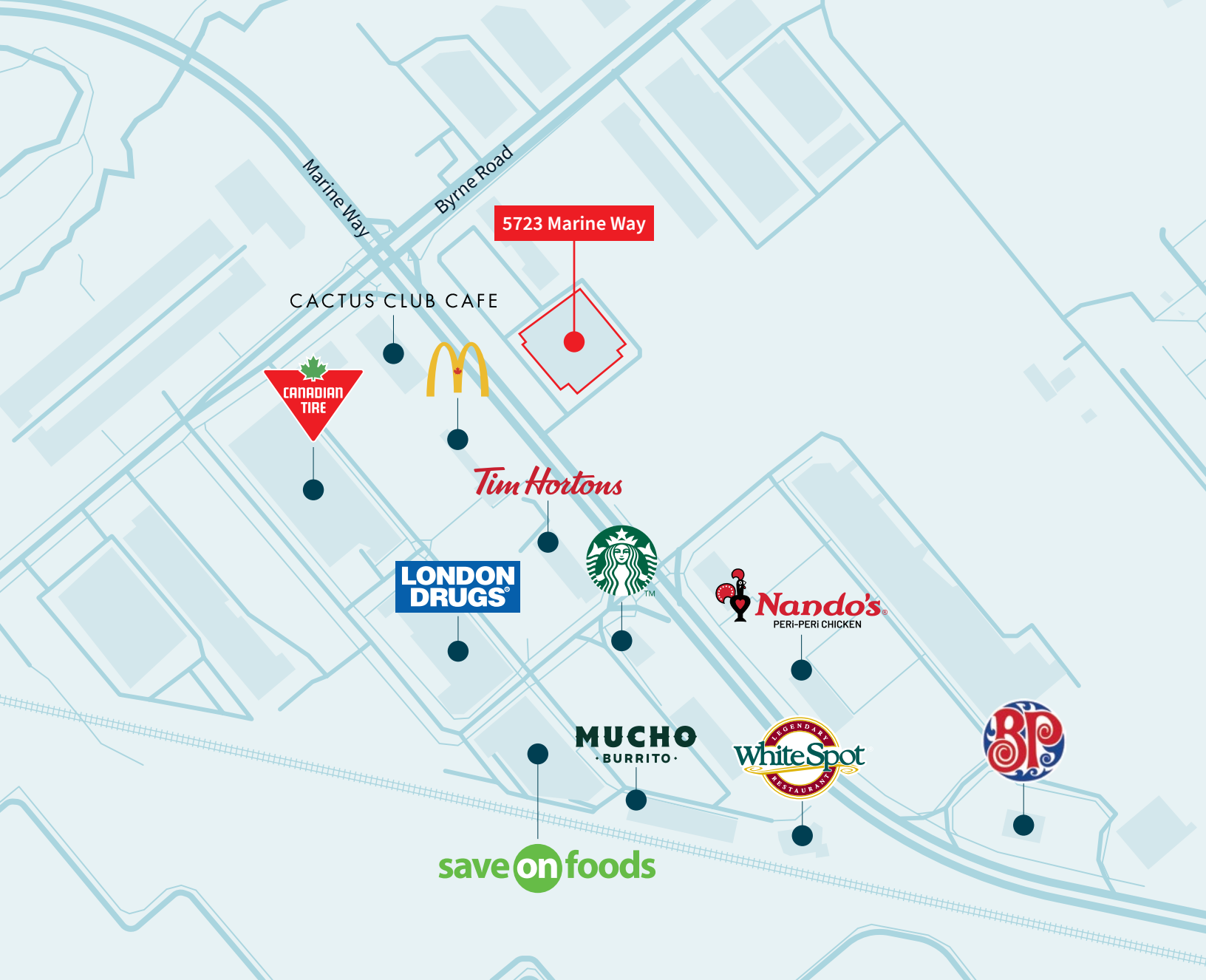
Suite	200
Size	2,892 s.f.
Availability	Immediately
Sublease Expiry	Flexible
Basic Rent	Contact listing brokers
Additional Rent	\$12.07 psf/pa (2025)
Parking	9 parking stalls
Furniture	Negotiable




FLOOR PLAN







 **JLL** SEE A BRIGHTER WAY

Cam Bertsch*

Associate Vice President

cam.bertsch@jll.com

+1 604 998 6053

Although information contained herein has been obtained from sources deemed reliable, the owner, Jones Lang LaSalle Real Estate Services, Inc. ("JLL Canada"), and/or their representatives, brokers or agents make no guarantees as to the accuracy of the information contained herein, and offer the property/portfolio without express or implied warranties of any kind. The property/portfolio may be withdrawn without notice. If the recipient of this information has signed a confidentiality agreement regarding this matter, this information is subject to the terms of that agreement.