

**4,183 SF**  
Retail/Office Space



**10328 WHALLEY BOULEVARD**  
Surrey, BC

**Sumir Chauhan, Commercial Real Estate Broker**  
604.725.5977 | [sumirchauhan@royallepagecommercial.com](mailto:sumirchauhan@royallepagecommercial.com)

**Royal LePage® Global Force Realty, Brokerage**  
15300 54 Avenue, Unit #306, Surrey, BC  
Independently Owned & Operated

FOR LEASE

# \$12.00/SF

## Property Features

- Prime 4,183 SF retail/office space available at 10328 Whalley Blvd in the heart of Surrey Central.
- This high-exposure location offers excellent visibility, heavy foot traffic, and convenient access to transit and major roadways.
- Ideal for business seeking a short to mid-term lease in a rapidly developing area.
- Demo clause in place.
- Contact today for more details!
- The basic rent for this unit is \$4,183.00, with an additional rent of \$6,274.50 bringing the total monthly rent to \$10,457.50



PROPERTY OVERVIEW

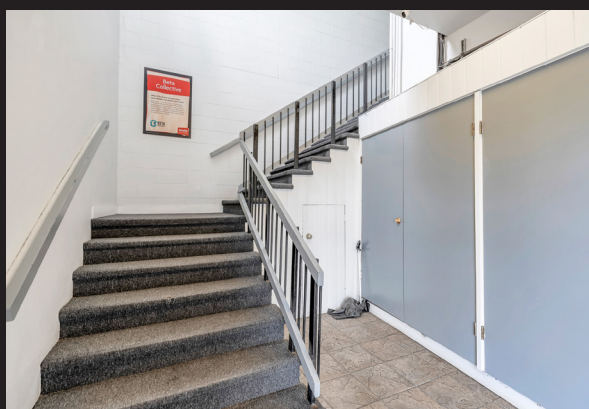
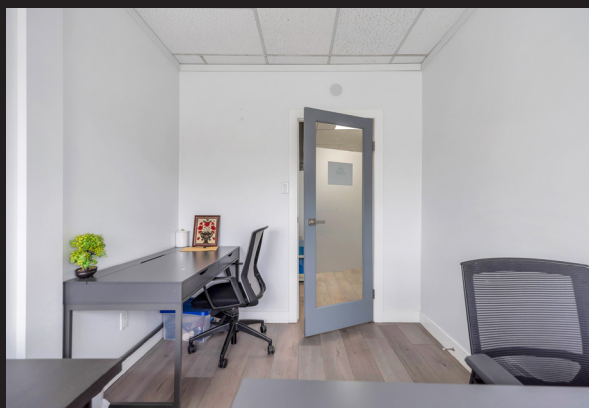


# PROPERTY PHOTOS





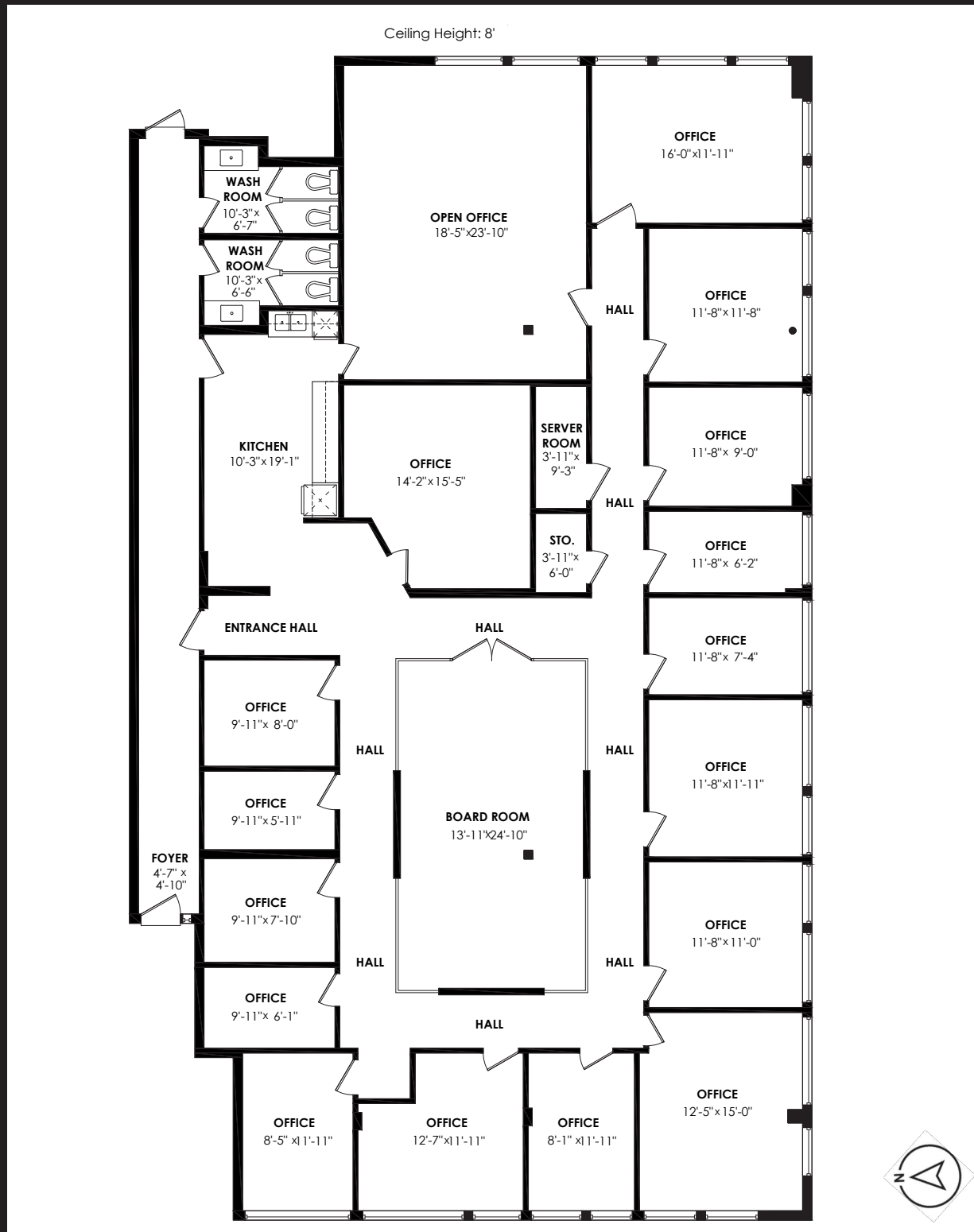
# PROPERTY PHOTOS



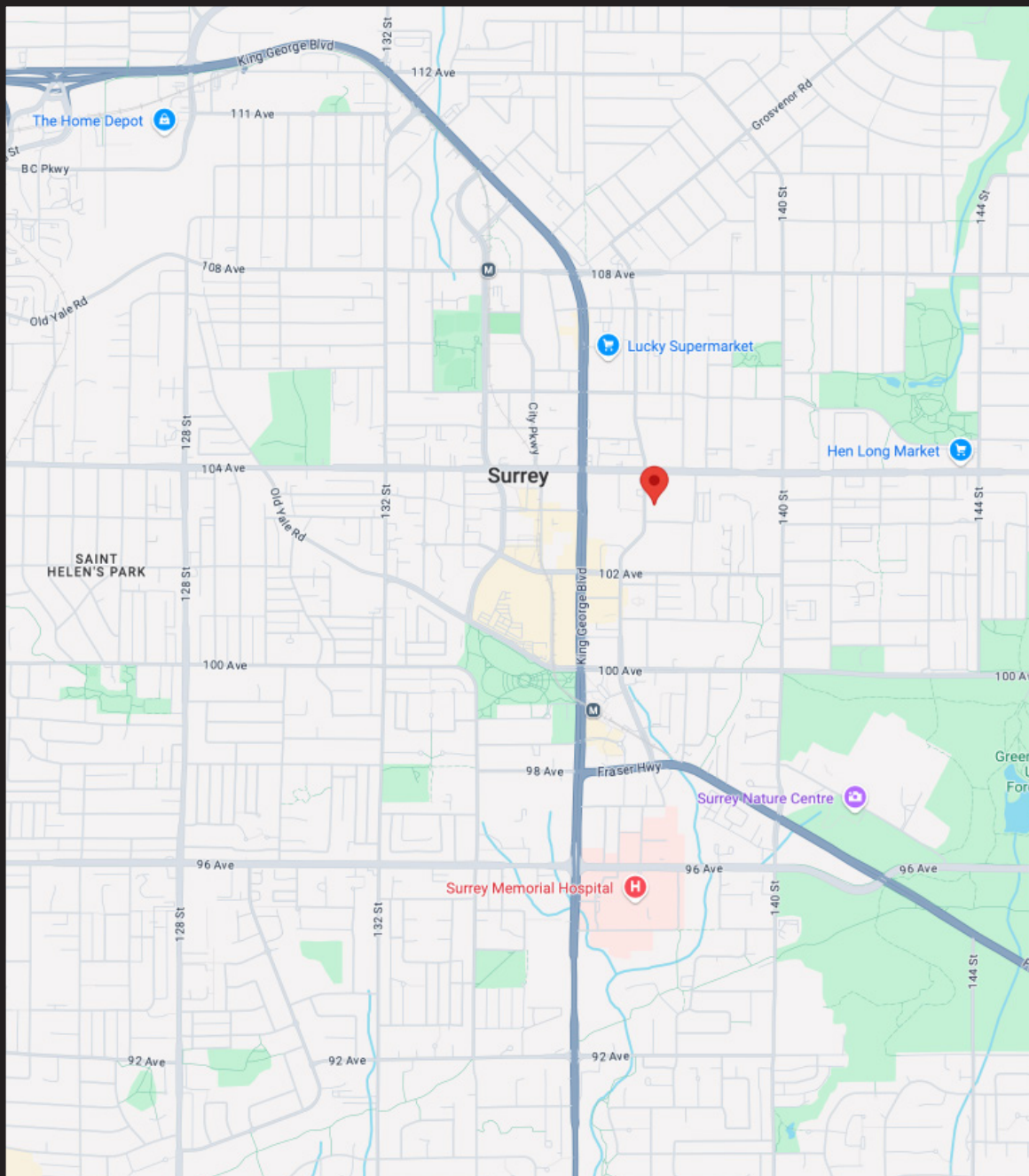
# FLOOR PLAN

## Main Floor - 4,183 SF

FLOOR PLAN



# LOCATION MAP



Royal LePage® is a registered trademark of Royal Bank of Canada and is used under licence by Residential Income Fund L.P., Bridgemark Real Estate Services Inc. and Bridgemark Real Estate Services Manager Limited.

All offices are independently owned and operated, except those marked as indicated at [rlp.ca/disclaimer](http://rlp.ca/disclaimer). Not intended to solicit currently listed properties or buyers under contract. The above information is from sources believed reliable, however, no responsibility is assumed for the accuracy of this information. ©2025 Bridgemark Real Estate Services Manager Limited. All rights reserved.