

# FOR LEASE

Prime Retail/Office Space on Henderson Highway

Boardwalk Mall, 1411-1423 Henderson Highway, Winnipeg, Manitoba

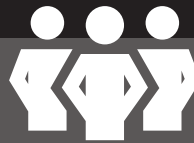
**TENANT RELOCATING**



**STRONG  
RETAIL AREA**



**AMPLE  
PARKING**



**485,000+  
POPULATION**  
Based on Trade Area (2025)



**DENSE  
RESIDENTIAL**

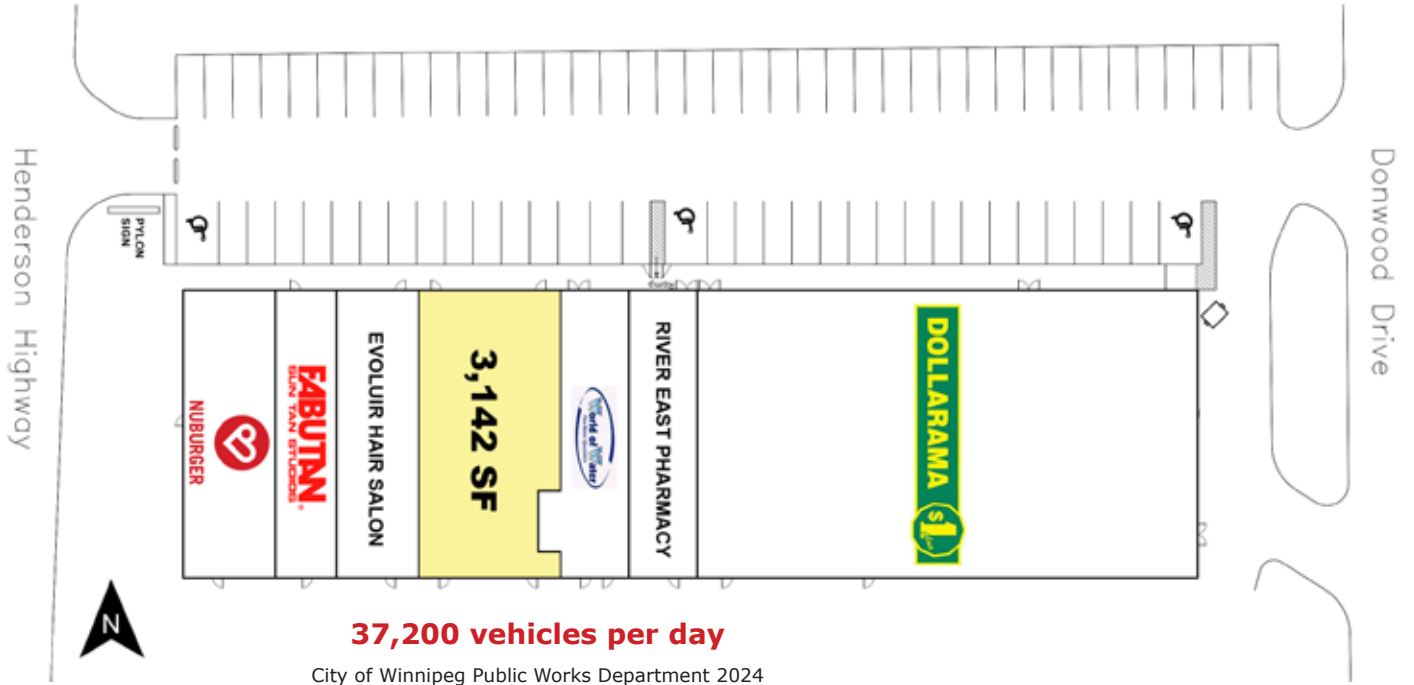
[www.shindico.com](http://www.shindico.com)

**Shindico**

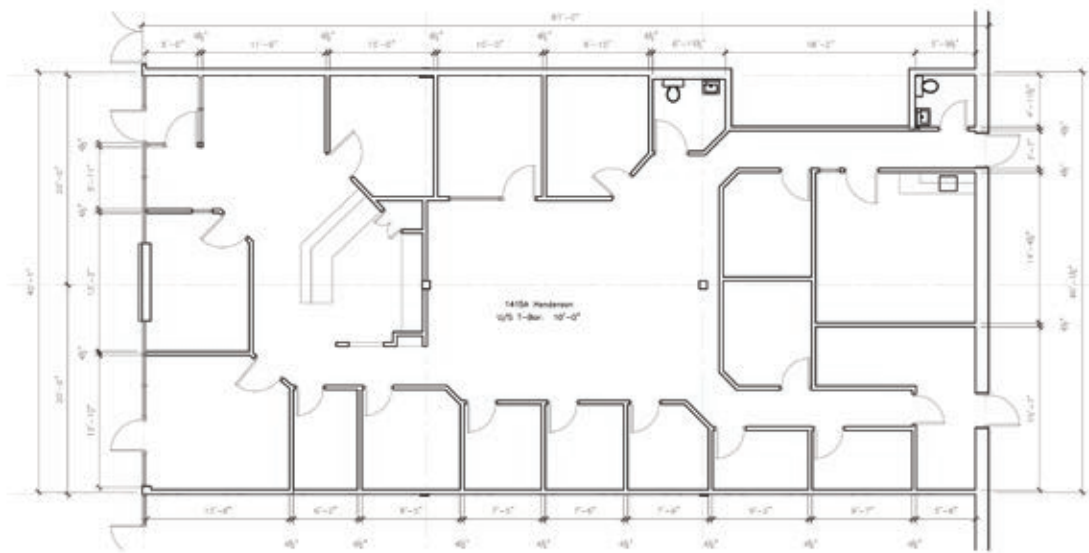
# FOR LEASE

Boardwalk Mall, 1411-1423 Henderson Highway, Winnipeg, Manitoba

## SITE PLAN



## FLOOR PLAN



 [CLICK HERE TO TAKE A VIRTUAL TOUR](#)

204.474.2000

**Shindico**

# FOR LEASE

Boardwalk Mall, 1411-1423 Henderson Highway, Winnipeg, Manitoba



## PROPERTY SUMMARY

Available	3,142 SF
Possession Date	June 1, 2026
Property Taxes (2026 est.)	\$4.70/SF
CAM* (2026 est.)	\$6.52/SF
Zoning	C4
Parking	75 stalls

\*plus management fee

## FEATURES

- Large pylon signage opportunity on newly constructed LED structure.
- Fully improved existing office layout.
- Directly south of River East Plaza, anchored by Safeway, CIBC and Boston Pizza.
- Excellent access from Henderson Highway and Donwood Drive.

## LOCATION

- Situated along Henderson Highway's prime commercial strip, directly south of the Chief Peguis Trail.
- Surrounded by densely populated residential communities of North and East Kildonan.
- Close proximity to Kildonan Village, the Rossmere Golf & Country Club, Safeway, Boston Pizza, Sobeys, McDonalds, Popeye's Louisiana Kitchen, A&W and Goodyear Tire.
- Access to a large trade area, including East St. Paul, North Main, Riverbend/River Grove, and West St. Paul via Chief Peguis Trail.

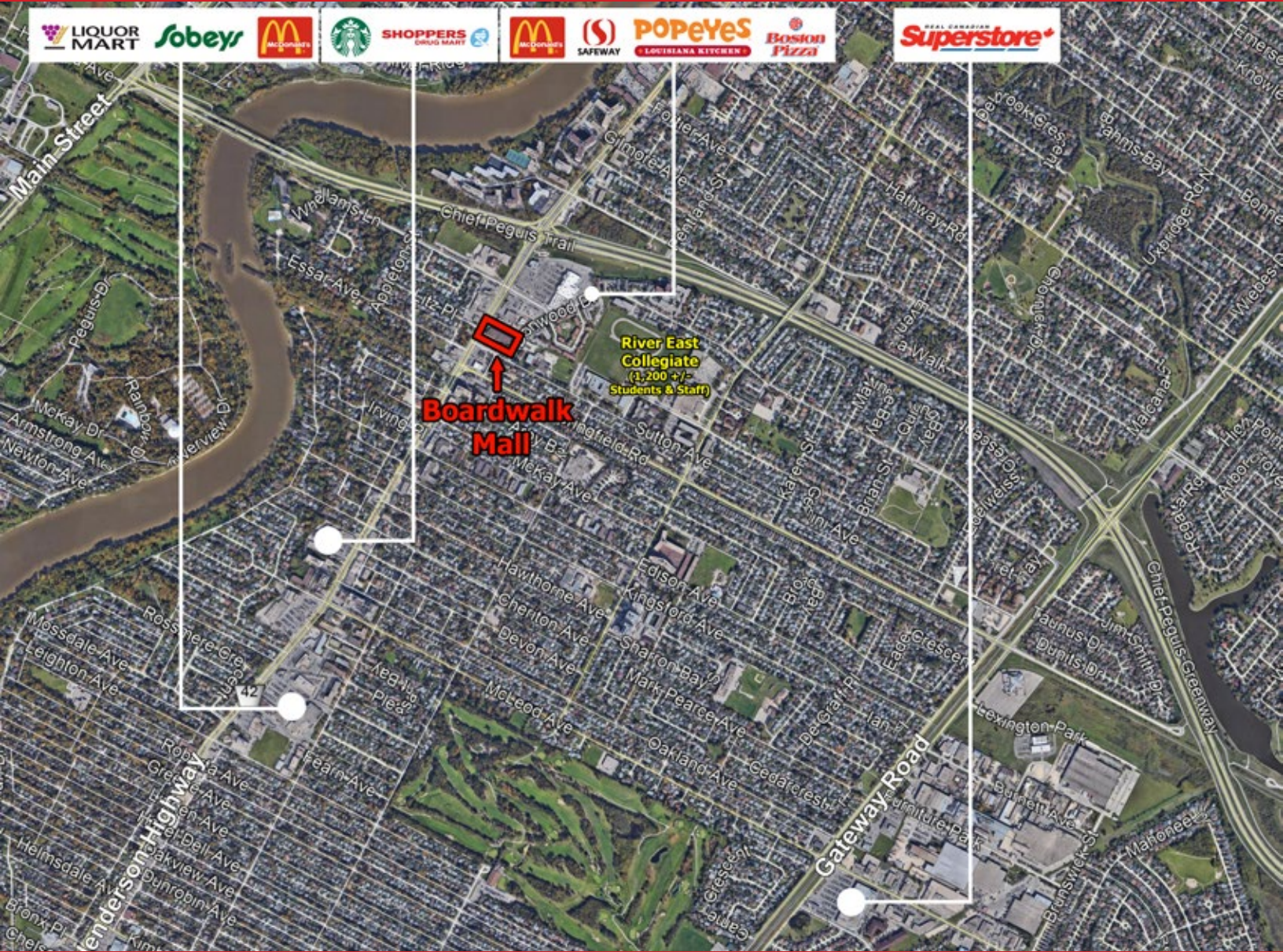
## DEMOGRAPHICS

	5 km. Radius	10 km. Radius
Total Population	175,759	486,450
Daytime Population	135,999	539,434
Households	67,879	190,021
Median Age	38.2	37.0
Avg. Household Income	\$107,272	\$101,004

Environics Analytics ©2025

# FOR LEASE

Boardwalk Mall, 1411-1423 Henderson Highway, Winnipeg, Manitoba



FOR MORE INFORMATION, PLEASE CONTACT:

**Michael Stronger**

\*SHINDICO REALTY, MICHAEL STRONGER and SHINDICO REALTY are affiliated Brokers

P (204) 928-8237

C (204) 793-3448

[mstronger@shindico.com](mailto:mstronger@shindico.com)

**Dino Alevizos\***

\*Services provided by Dino Alevizos Personal Real Estate Corporation

P (204) 928-8209

C (204) 781-9717

[dalevizos@shindico.com](mailto:dalevizos@shindico.com)

**Shindico Realty Inc.**

200-1355 Taylor Avenue

Winnipeg, Manitoba R3M 3Y9

P (204) 474-2000

[inquire@shindico.com](mailto:inquire@shindico.com)

[www.shindico.com](http://www.shindico.com)



*Shindico is dedicated to the protection of the environment and the communities that we are a part of.*

The accuracy of the information set out herein has not been confirmed, and Shindico Realty Inc. and its affiliates make no representations or warranties as to the accuracy of the information and assumes no responsibility for errors or omissions. The recipient is responsible to verify the accuracy of any information and bears all risk related to any inaccuracies.031126