

Industrial | For Lease

#1125 - 2551 No 6 Road

Richmond, BC

13,345 SF Dock Loading Warehouse Unit



Contact

Bruce Richardson
Vice President
Industrial Properties
+1 604 662 5127
bruce.richardson@cbre.com

Fraser Rowland
Vice President
Industrial Properties
+1 604 662 5128
fraser.rowland@cbre.com

Terry Butt
Personal Real Estate Corporation
Associate Vice President
Industrial Properties
+1 778 372 1949
terry.butt@cbre.com

CBRE

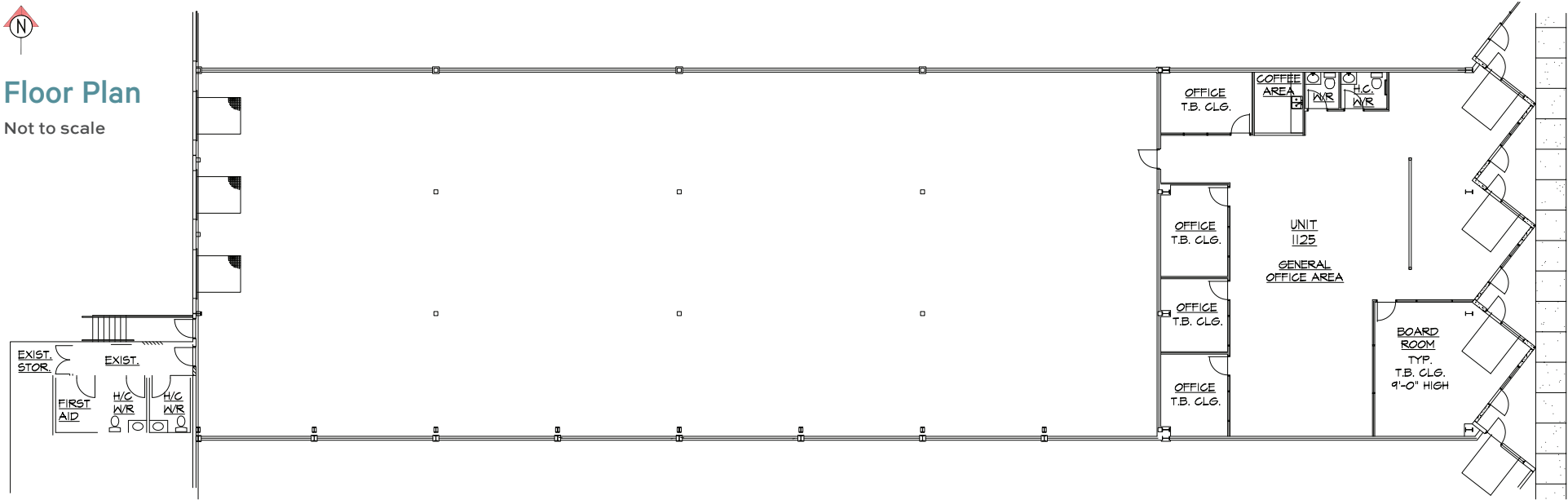
For Lease

#1125 - 2551 No. 6 Road
Richmond, BC



Property Details

BUILDING SIZE* (approx.)	Warehouse Area	9,480 SF
	Office/Showroom	3,865 SF
	Total	13,345 SF
WAREHOUSE CLEAR HEIGHT	24'	
LOADING	3 dock doors	
ZONING	IL (Light Industrial)	
NET RENT	\$19.75 PSF	
OPERATING COSTS	\$5.74 PSF (2025 estimate)	
AVAILABILITY	September 1, 2025	



For Lease

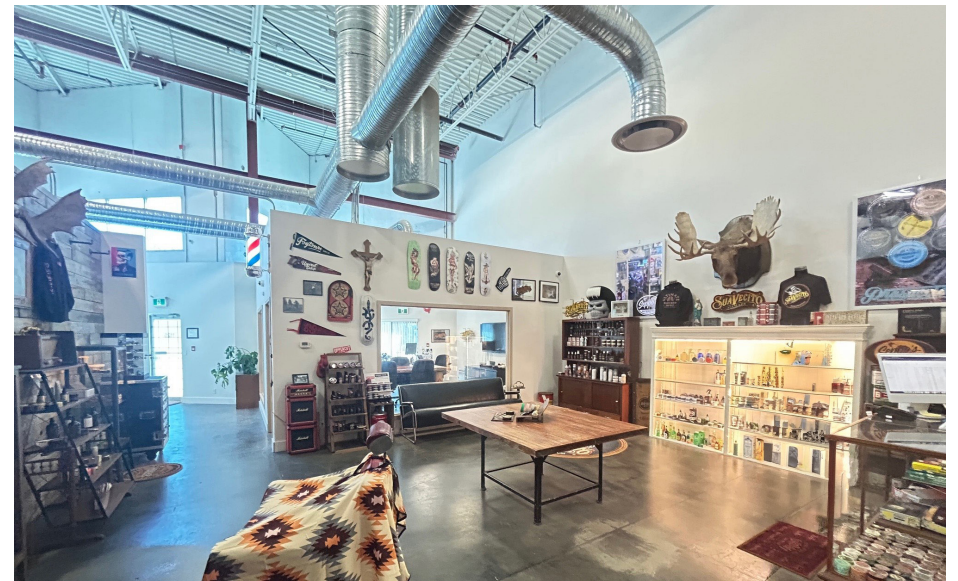
#1125 - 2551 No. 6 Road

Richmond, BC

CBRE

Property Highlights

- + ESFR Sprinklers
- + Front office rear load building design
- + Large loading court with drive around access
- + Ample parking



For Lease

#1125 - 2551 No. 6 Road

Richmond, BC

CBRE



Prime North Richmond Location just off Knight/ Bridgeport Interchange

- + Many amenities along Bridgeport Road: restaurants, shopping, bank, and more.
- + Quick access to rapid transit and accessibility to Knight Street, Bridgeport Road, Highway 91/99.

Contact

Bruce Richardson
Vice President
Industrial Properties
+1 604 662 5127
bruce.richardson@cbre.com

Fraser Rowland
Vice President
Industrial Properties
+1 604 662 5128
fraser.rowland@cbre.com

Terry Butt
Personal Real Estate Corporation
Associate Vice President
Industrial Properties
+1 778 372 1949
terry.butt@cbre.com

CBRE Limited | 1021 West Hastings Street #2500, Vancouver, BC www.cbre.ca

This disclaimer shall apply to CBRE Limited, Real Estate Brokerage, and to all other divisions of the Corporation; to include all employees and independent contractors ("CBRE"). The information set out herein, including, without limitation, any projections, images, opinions, assumptions and estimates obtained from third parties (the "Information") has not been verified by CBRE, and CBRE does not represent, warrant or guarantee the accuracy, correctness and completeness of the Information. CBRE does not accept or assume any responsibility or liability, direct or consequential, for the Information or the recipient's reliance upon the Information. The recipient of the Information should take such steps as the recipient may deem necessary to verify the Information prior to placing any reliance upon the Information. The Information may change and any property described in the Information may be withdrawn from the market at any time without notice or obligation to the recipient from CBRE. CBRE and the CBRE logo are the service marks of CBRE Limited and/or its affiliated or related companies in other countries. All other marks displayed on this document are the property of their respective owners. All Rights Reserved.

Mapping Sources: Canadian Mapping Services canadamapping@cbre.com; DMTI Spatial, Environics Analytics, Microsoft Bing, Google Earth.