

End-Cap Unit at The Shoppes at Chappelle Crossing

2,766 SF with drive-through capabilities

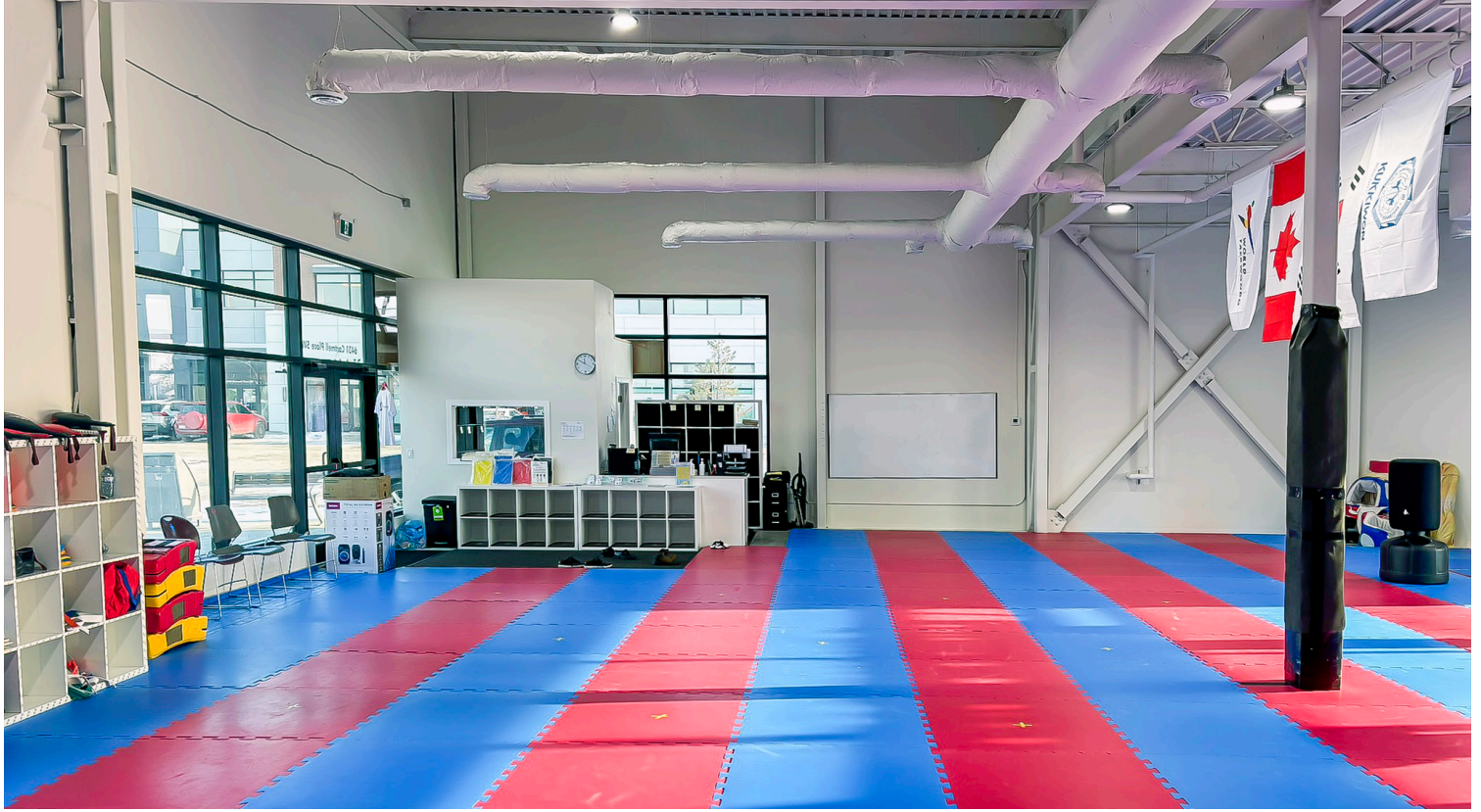
6431 Cartmell Place SW
Edmonton, AB

Price Reduced! Now \$30.00 Per Sq. Ft.



End-Cap Unit at The Shoppes at Chappelle Crossing

6431 Cartmell Place SW | Edmonton, AB



End Cap Unit with Drive-Through Capabilities

Open floor plan, ready for development

Introducing a rare opportunity to own or lease an end-cap commercial condo unit with prime drive-through potential, ideally situated in the bustling Shoppes at Chappelle Crossing. This highly visible location is perfect for attracting customers and maximizing foot traffic.

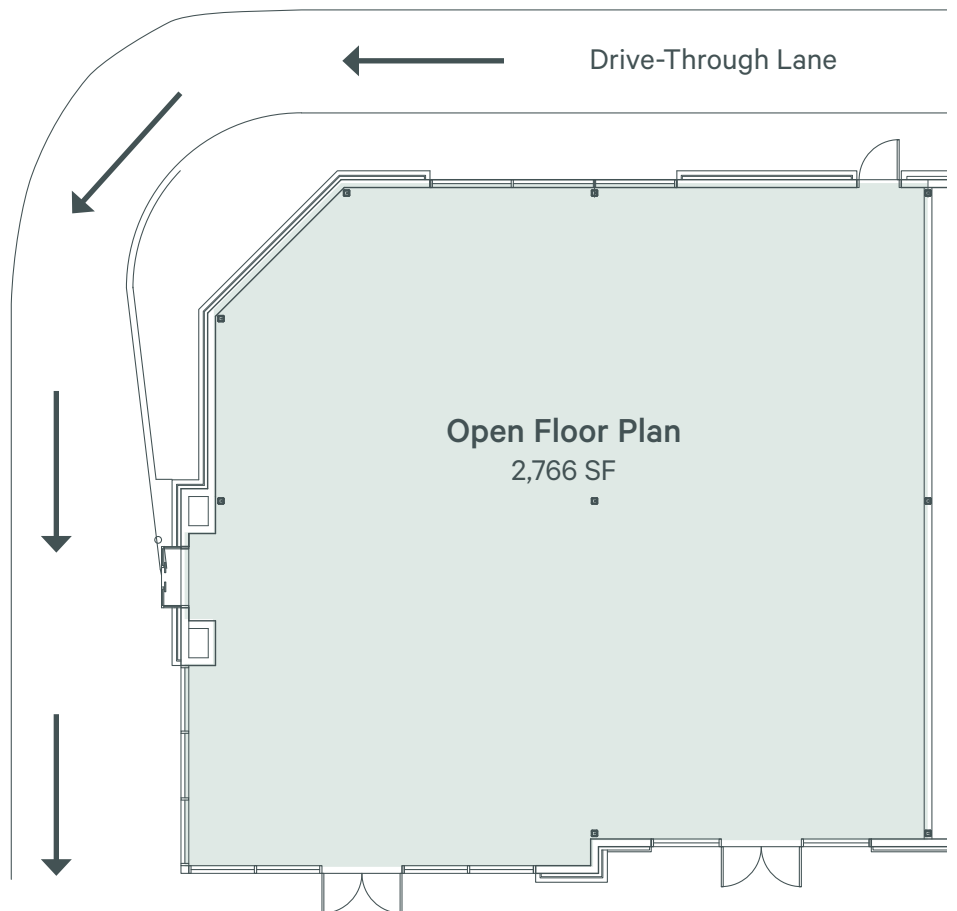
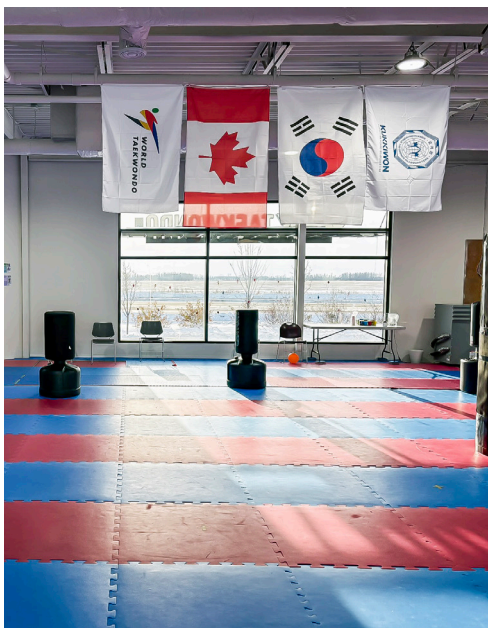
With General Commercial zoning, this versatile space accommodates a wide range of uses, including office, retail, health care, and more. The unit currently features an open floor plan that is ready for your custom buildout — design the perfect space to suit your business needs!

Don't miss your chance to secure this exceptional property in a vibrant community. Whether you're looking to invest or expand your business, this is the ideal location to make your vision a reality.

Property Details

Legal Description	Condo Plan 2021910, Unit 28
Total Unit Size	2,766 SF
Sale Price	Contact Listing Agent
Property Tax	\$38,728.73
Condo Fees	\$1,267.88/month (2025)
Lease Rate	\$35.00 \$30.00 PSF
Operating Costs	\$20.30 PSF
Parking	Scramble Surface

Construction	Brick & aluminum metal panels with steel stud framing	
Year Built	2019	
Zoning	CG - General Commercial	
Power	600 amps, 3-phase	
Est. Population (2024)	4,442 1KM Radius	34,242 3KM Radius
Projected Population (2029)	4,679 1KM Radius	42,869 3KM Radius
Est. Population Growth (2024 - 2029)	5.3% 1KM Radius	25.2% 3KM Radius



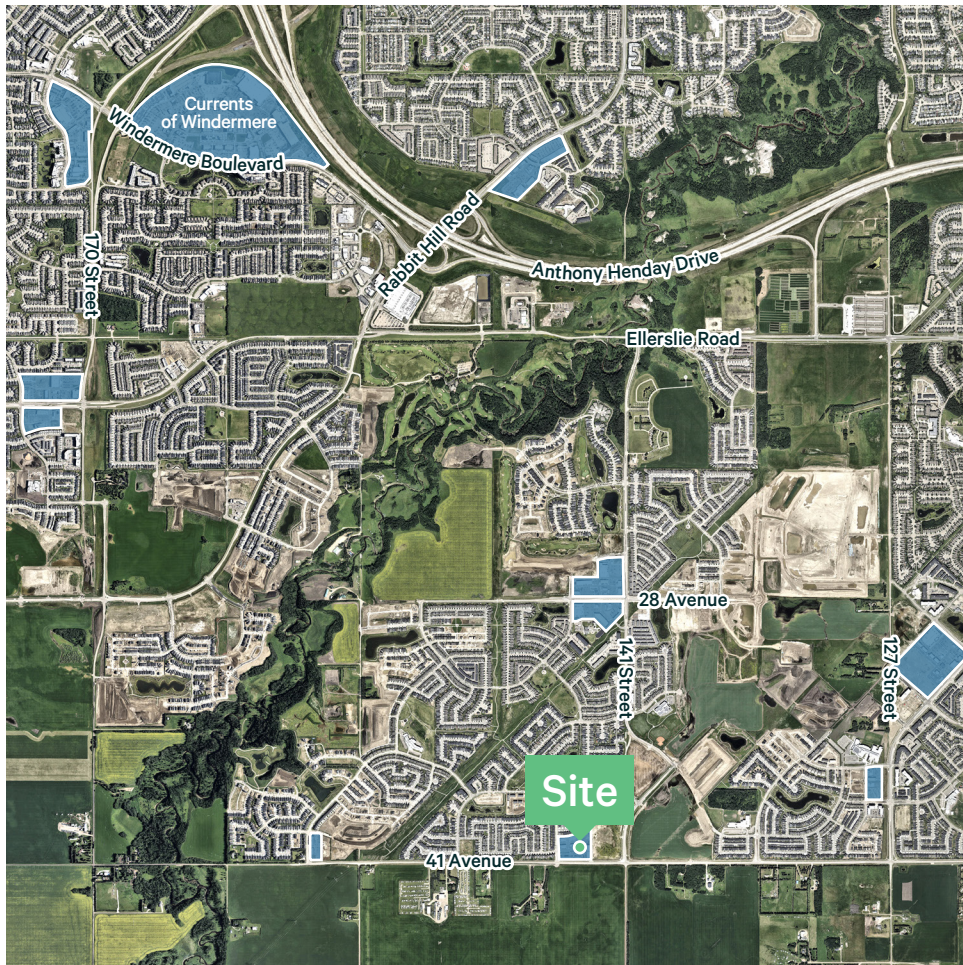
End-Cap Unit at The Shoppes at Chappelle Crossing

6431 Cartmell Place SW | Edmonton, AB

For Sale / Lease

Join a vibrant community at The Shoppes at Chappelle Crossing

High visibility along 41 Ave SW with easy access to James Mowatt Trail SW & the QE II Highway



Nearby Amenities

Within A 5 Minute Drive

- Starbucks
- Wendy's
- A&W
- Subway
- OPA!
- Dairy Queen
- LovePizza
- BarBurrito
- Edo Japan
- Domino's Pizza
- KFC
- McDonald's
- Save-On-Foods
- Superstore
- Shoppers Drug Mart
- Dollarama
- Canada Post
- CIBC
- RBC
- TD Canada Trust
- Shell
- Co-Op Gas
- Mobil
- Co-Op Car Wash
- OK Tire

Within A 11 Minute Drive

- Tim Hortons
- Five Guys
- Freshii
- Carl's Jr.
- Booster Juice
- Jugo Juice
- Marble Slab
- Scoop N Roll
- Mucho Burrito
- Crumbl Cookies
- OEB Breakfast
- The Keg
- Boston Pizza
- kb&co
- Montana's
- Browns Social House
- Canadian Brewhouse
- Bowers & Grafton
- Cora Breakfast
- Royal Pizza
- Walmart
- Safeway
- Freson Bros
- Staples
- Canadian Tire
- Home Depot
- Cineplex Odeon
- MOVATI Athletic
- Planet Fitness
- ATB
- Scotiabank
- Petro-Canada
- Jiffy Lube
- Kal Tire

Contact Us

Ryan O'Shaughnessy

Senior Sales Associate

+1 780 229 4686

ryan.oshaughnessy@cbre.com

Matthew Hanson

Sales Representative

+1 780 917 4637

matthew.hanson@cbre.com

This disclaimer shall apply to CBRE Limited, Real Estate Brokerage, and to all other divisions of the Corporation; to include all employees and independent contractors ("CBRE"). All references to CBRE Limited herein shall be deemed to include CBRE, Inc. The information set out herein, including, without limitation, any projections, images, opinions, assumptions and estimates obtained from third parties (the "Information") has not been verified by CBRE, and CBRE does not represent, warrant or guarantee the accuracy, correctness and completeness of the Information. CBRE does not accept or assume any responsibility or liability, direct or consequential, for the Information or the recipient's reliance upon the Information. The recipient of the Information should take such steps as the recipient may deem necessary to verify the Information prior to placing any reliance upon the Information. The Information may change and any property described in the Information may be withdrawn from the market at any time without notice or obligation to the recipient from CBRE. CBRE and the CBRE logo are the service marks of CBRE Limited and/or its affiliated or related companies in other countries. All other marks displayed on this document are the property of their respective owners. All Rights Reserved.