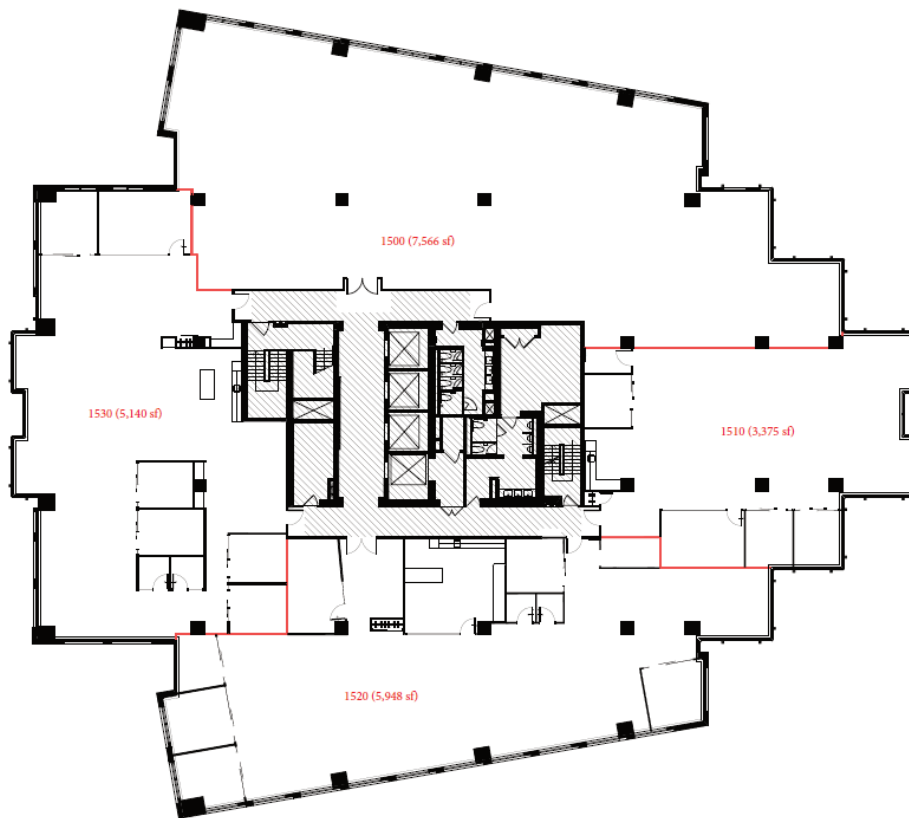


Updated: 2026

Suite Features

45 O'Connor Street
—
World Exchange Plaza



Suite
1520

Rentable Area
5,948 SF (stm)

Availability: Q4 2026

Key features:

- Brand new model suite, currently under construction
- High end model suite finishes
- Kitchen, four offices, one boardroom, a small meeting room, plus open area for workstations
- Flexible design with potential for tenant to add more offices

Additional Rent:

- \$29.36 PSF

Stephanie Thompson
Director, Leasing
Sales Representative
QuadReal Property Group, Brokerage

T 613 690 7394
E Stephanie.Thompson@quadreal.com
W www.quadreal.com



Updated: 2026

Furniture Plan

45 O'Connor Street
—

Suite
1520



*For visioning purposes