

**Yorkstone**

MANAGEMENT



**Available for Lease**

**10 King Street East**

2nd floor - 4,371 Sq.Ft.

**contact: [info@yorkstone.ca](mailto:info@yorkstone.ca) / (416) 203-1334**

## THE SPACE:

### Office Space

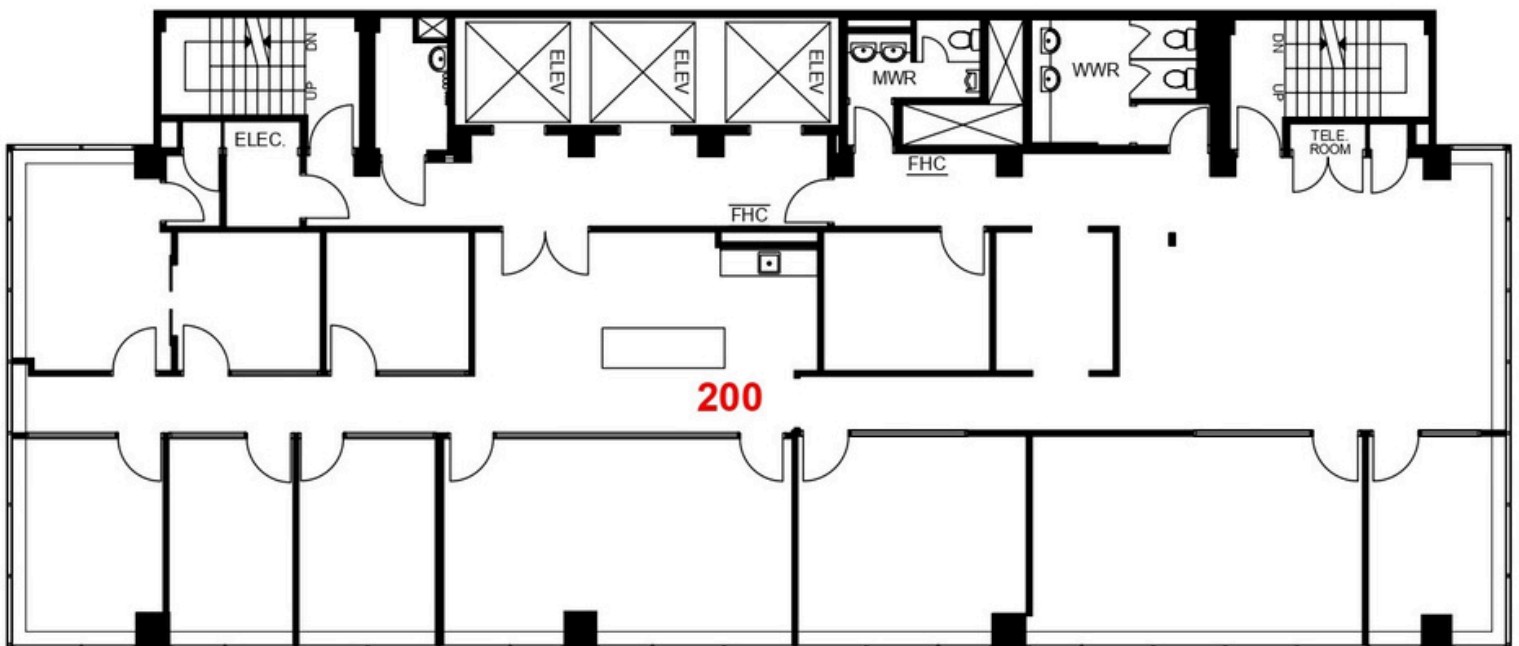
#### Suite 200 - 4,371 Sq. Ft.

- Full-floor office
- Large conference room
- Nine private offices
- Spacious open-concept work area
- Copy room/storage
- Kitchen
- Large windows throughout the unit, filled with natural light

### Nearby Amenities:

- King Edward Hotel
- Path System
- Starbucks
- Dineen Coffee
- Numerous Restaurants
- King Subway Station

## FLOOR PLAN:



# SUITE PHOTOS:



contact: [info@yorkstone.ca](mailto:info@yorkstone.ca) / (416) 203-1334