

SHAZ KARIM

PERSONAL REAL ESTATE CORPORATION

1570 SPERLING AVE BURNABY, BC

9 BEDROOMS + 6 BATHROOMS

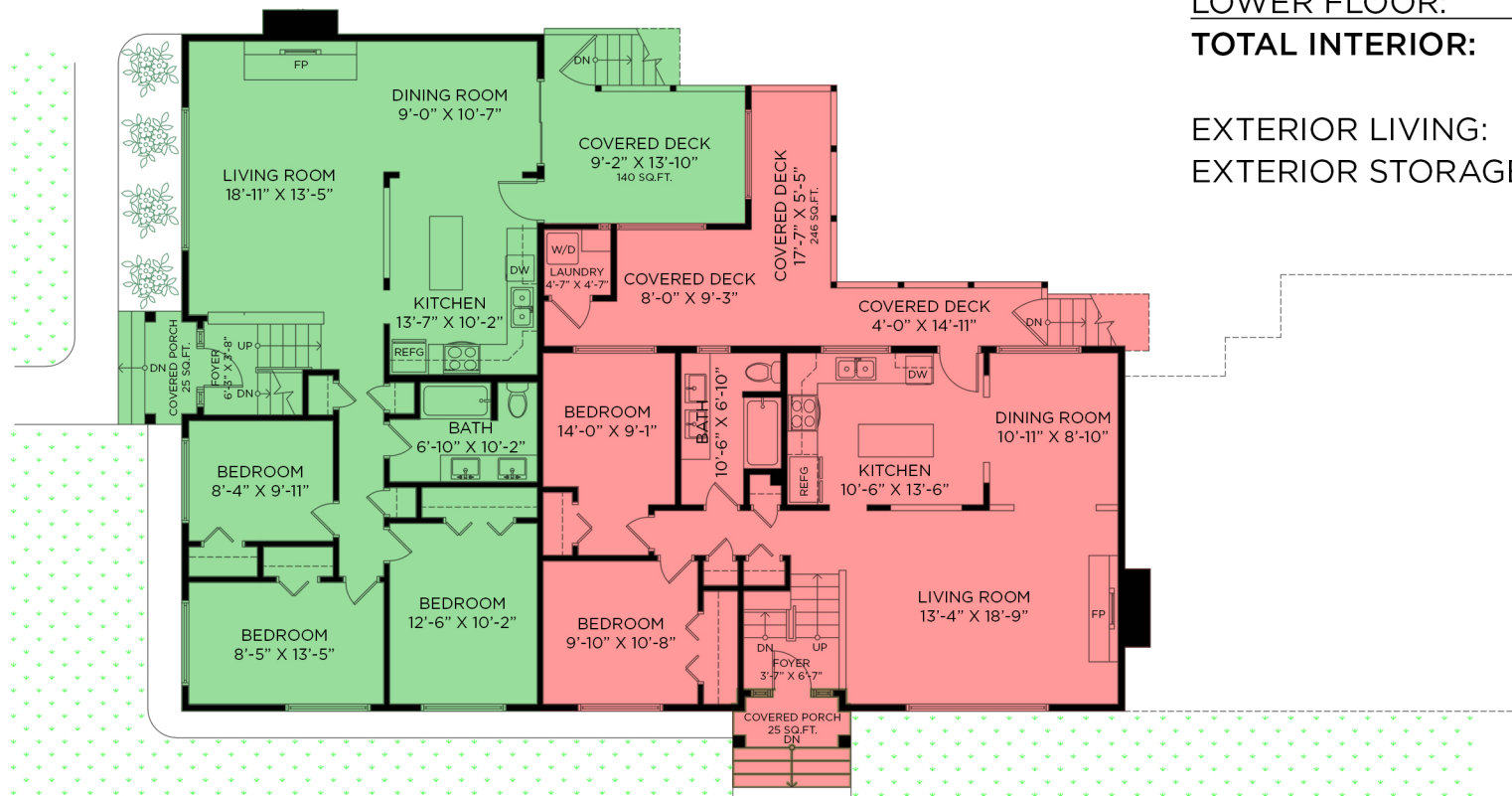
MAIN FLOOR
2,214 SQ.FT.

MAIN FLOOR: 2,214 SQ.FT.
LOWER FLOOR: 2,133 SQ.FT.
TOTAL INTERIOR: 4,347 SQ.FT.

EXTERIOR LIVING: 1,151 SQ.FT.
EXTERIOR STORAGE: 364 SQ.FT.

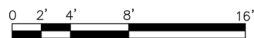
SPERLING AVENUE

ENTRANCE



ENTRANCE

WINCH STREET



Floor plan not suitable for architectural/construction purposes. ANSI Z765 stand used to calculate square footage. Buyer to verify. E&O insured for \$1,000,000.

