

**648-1281 HORNBY STREET, VANCOUVER**

**BRAND NEW 841 SF OFFICE UNIT AT ONE BURRARD PLACE**

**FOR  
LEASE**



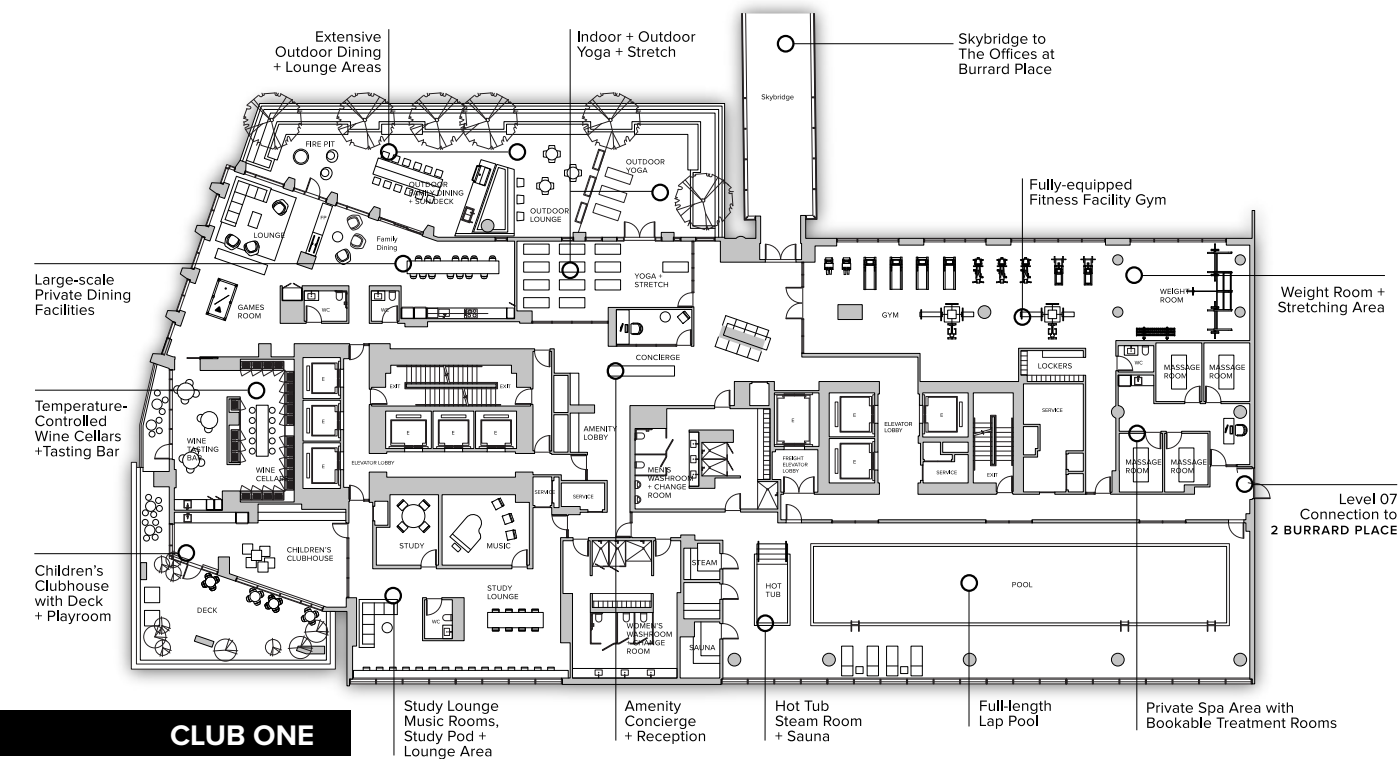
**WILLIAM | WRIGHT**

Commercial Real Estate Services

**MEG COONEY**  
meg@williamwright.ca  
604.428.5255

**LIAM SIMPSON**  
liam@williamwright.ca  
604.428.5255

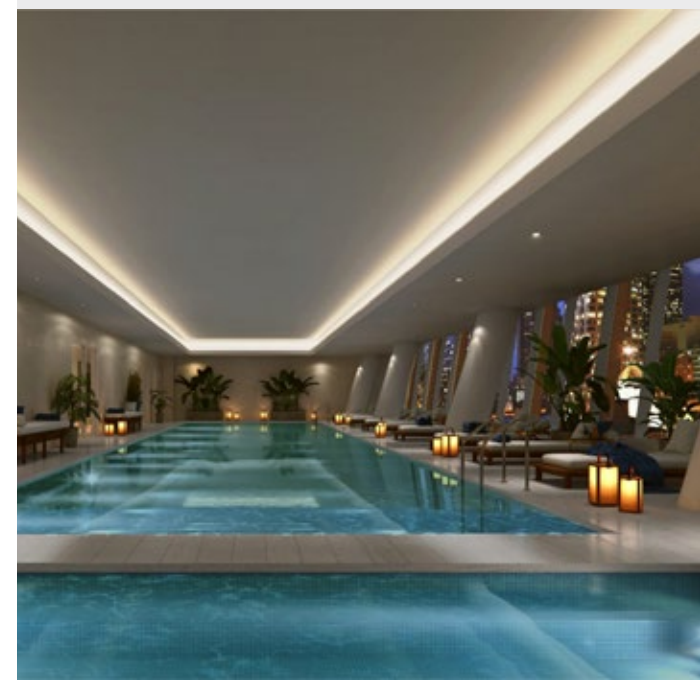
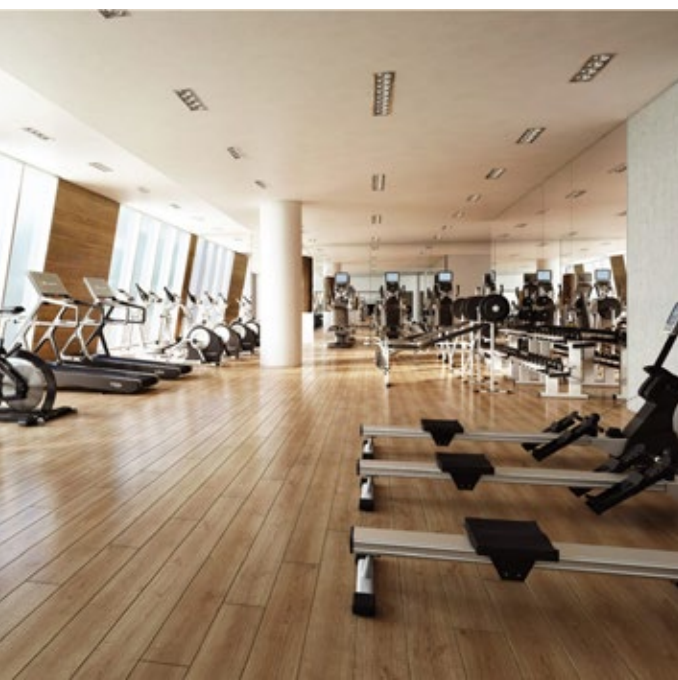
**MATTHEW HO**  
matthew.ho@williamwright.ca  
604.428.5255



## OVERVIEW

Brand new 841 SF office unit in the remarkable One Burrard Place by Reliance Properties. Unit #648 is one of the most desirable and efficient layouts in One Burrard Place: column-free, immediate access to elevators, shallow depth which welcomes an abundance of natural light, and is facing Drake Street (quiet side). The floor offers common washroom as well as a generous-sized boardroom.

Occupiers will benefit from an impressive list of the AAA amenities Club One has to offer including: a Fitness Facility, Private Spa, Indoor Lap Pool & Hot Tub, Indoor/ Outdoor Yoga Space, Outdoor Dining & Lounge Areas, Private Dining Facilities, Wine Cellars and Tasting Bars, Children's Clubhouse, Butler Concierge, and more.





**SIZE**

+/- 841 SQFT

**ZONING**

CD-1 (588)

**PARKING**

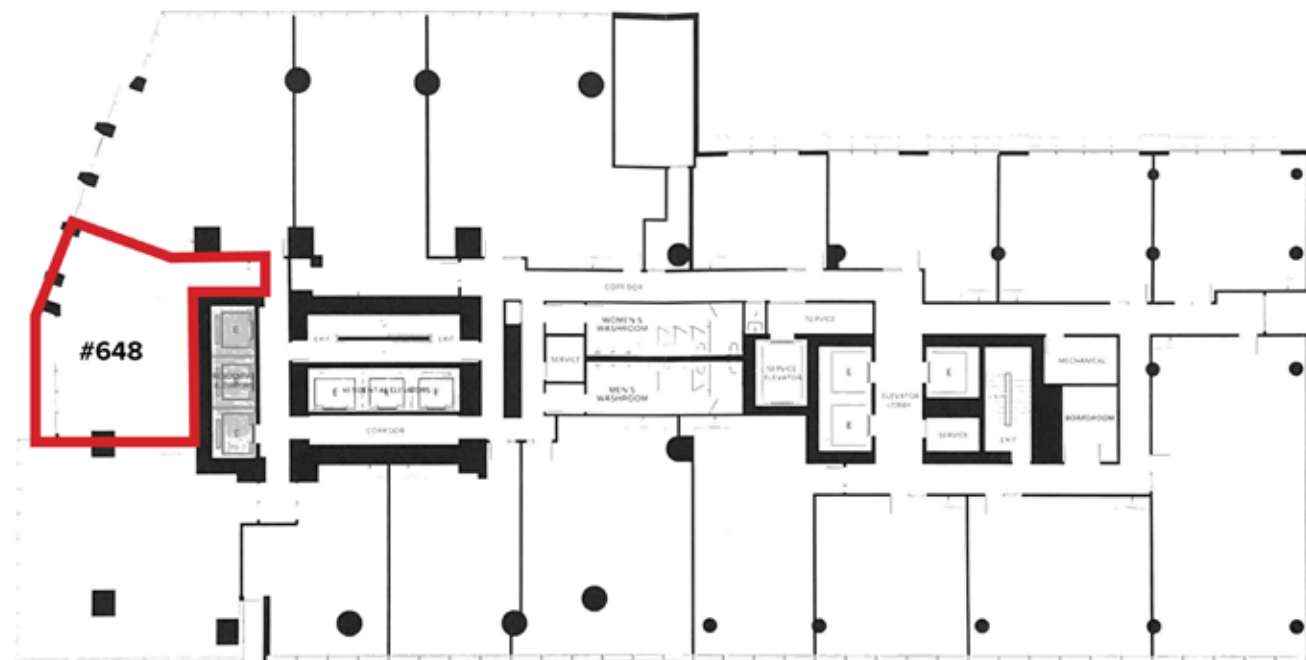
\$250/month/stall

**BASIC RENT**

\$45.00/FT

**ADDITIONAL RENT**

\$20.00/FT





**97**  
TRANSIT SCORE



**92**  
BIKE SCORE



**97**  
WALK SCORE

**SUBJECT PROPERTY DISTANCES**

YALETOWN-ROUNDHOUSE STATION — 650 M

VANCOUVER CITY CENTRE STATION — 1.5 KM

## LOCATION

One Burrard Place amasses half a city-block along Hornby Street and corners Drake Street with immediate access to the Granville Street and Burrard Street Bridges. The building is only a 10-min walk to Yaletown, offering an array of lunch options such as Earls, Elisa, Brix and Mortar, Minami, Cactus Club, Blue Water Cafe, The Keg, and many more.

## TRANSIT

650m to Yaletown-Roundhouse Station (Canada Line) and 1.5km to Vancouver City Centre Station.

## FOR MORE INFORMATION CONTACT

**MEG COONEY**  
meg@williamwright.ca  
604.428.5255

**LIAM SIMPSON**  
liam@williamwright.ca  
604.428.5255

**MATTHEW HO**  
matthew.ho@williamwright.ca  
604.428.5255