



Colliers

1080 Mainland Street | Vancouver, BC

Improved Office Space For Lease Flexible Sizes Available

1080 Mainland Street is located in the center of vibrant and historic Yaletown. Not only surrounded by many trendy restaurants, and buzzing outdoor patios, the property is also home to many technology, financial, and other professional services. This office space provides convenient access to the Yaletown Roundhouse – Canada Line Station, grocery stores, and outdoor spaces.

James Morris

Personal Real Estate Corporation

Senior Associate

+1 604 692 1413

James.Morris@colliers.com

Accelerating success.

Property Overview

Address:	1080 Mainland Street
Suite:	303, 308 & 309
Size:	Approx. 341 SF to 3,246 SF Available
Available:	Immediately
Net Rent:	Contact Listing Agent
Additional Rent:	\$25.69 (2025 estimate)
Parking:	6 parking stalls - \$200/month

Key Highlights



2 minute walk to Yaletown Roundhouse Station



Nearby numerous high-end restaurants



Secure underground parking available



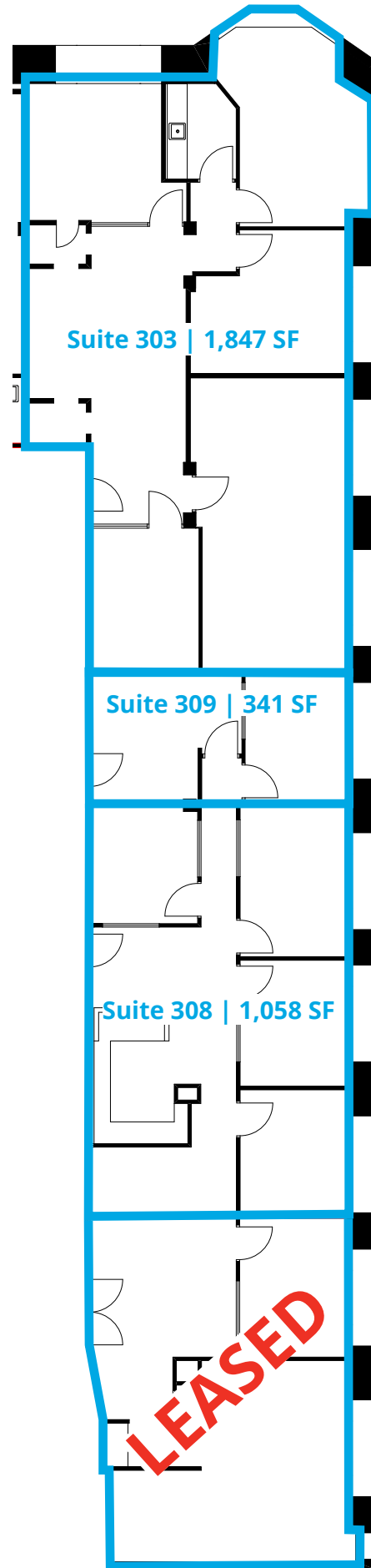
Bike Score
83



Walk Score
96



Transit Score
100



Surrounding Amenities

1080 Mainland Street	
Transportation	
1	Yaletown - Round House Station
Parks	
2	Helmcken Park
3	Emery Barnes Park
Restaurants and Cafes	
4	Bluewater Cafe
5	The Flying Pig
6	Cioppinos
7	Cactus Club Cafe
8	The Keg Kitchen + Bar
9	Earls Kitchen + Bar
10	La Terrazza
11	JJ Bean
12	Starbucks
Shopping	
13	Choices
14	Yaletown Liquor Store
15	Swirl Wine Shop
Companies	
16	PayByPhone
17	SAP
18	Vessi Footwear
19	Beanworks

Mainland Street



Features

- Landlord to provide new flooring
- Elevator exposure
- Improved with multiple private offices
- Kitchen



3,246 SF
available

James Morris

Personal Real Estate Corporation

Senior Associate

+1 604 692 1413

James.morris@colliers.com