

CBRE

RETAIL SPACE & PAD SITES AVAILABLE FOR LEASE

4-8-20 PINEGROVE ROAD

BRIDGEWATER, NS

UNIT 3 - 877 SQ. FT.
AVAILABLE NOW



OVERVIEW

4-8-20 PINEGROVE ROAD, BRIDGEWATER, NS

LOCATION

4-8-20 Pinegrove Road is conveniently located in Bridgewater, the South Shore's most rapidly growing area. This site is easily accessed from Highway 103 and is just a short drive to the heart of Downtown Bridgewater. This site's exceptional highway and community positioning allows it to easily service the surrounding municipalities.

In joining the South Shore's largest commercial centre, you will benefit from the traffic Walmart, Canadian Tire, Dollarama, PetValu, Staples, Harvey's, Swiss Chalet and Boston Pizza provide.

PROPERTY

Civic Address: 4, 8, 20 Pinegrove Road, Bridgewater, NS
Property Type: Retail Strip Plaza & Pad Opportunities

Space Available: Unit 3: 877 sq. ft. - Available Immediately

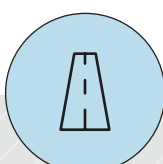
Rent: Please contact
Utilities: Tenant is responsible for utilities



PROPERTY HIGHLIGHTS



**Ample on-site
surface parking**



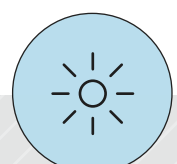
**Easy highway and
community access**



**Strong anchor
retailers & restaurants
on-site**



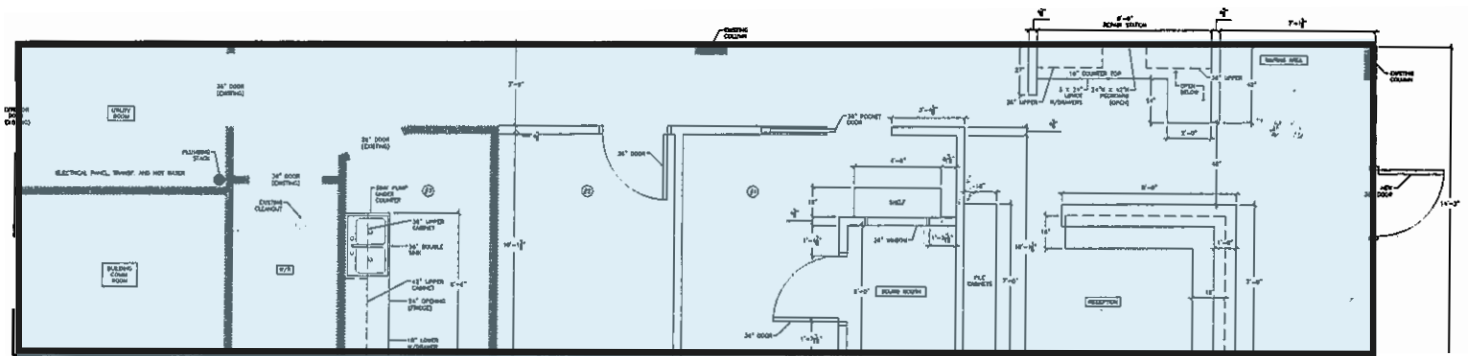
**Excellent signage
opportunities**



**Large windows &
great natural light**

4-8-20 PINEGROVE ROAD, BRIDGEWATER, NS

UNIT 3 - 877 SQ. FT.
AVAILABLE IMMEDIATELY



Opportunity for commercial space within new construction. Unit 4 is an efficient unit in great condition. Ideally suited for medical and professional services businesses seeking a blend of retail visibility and office functionality. Take advantage of the ample on-site surface parking, signage and easy access to the site for employees and customers.

SITE PLAN

4-8-20 PINEGROVE ROAD, BRIDGEWATER, NS



OPPORTUNITIES

3 Unit 3: 877 sq. ft. - Available Now

Pad Sites: 5,000 - 25,000 sq. ft. - Contact for more information

UNIT 3 - 877 SQ. FT.
AVAILABLE NOW



FOR MORE INFORMATION, PLEASE CONTACT:

Donald Tabor

Sales Associate

T 902 492 2061

M 902 471 0481

donald.tabor@cbre.com

This disclaimer shall apply to CBRE Limited, Real Estate Brokerage, and to all other divisions of the Corporation; to include all employees and independent contractors ("CBRE"). The information set out herein, including, without limitation, any projections, images, opinions, assumptions and estimates obtained from third parties (the "Information") has not been verified by CBRE, and CBRE does not represent, warrant or guarantee the accuracy, correctness and completeness of the Information. CBRE does not accept or assume any responsibility or liability, direct or consequential, for the Information or the recipient's reliance upon the Information. The recipient of the Information should take such steps as the recipient may deem necessary to verify the Information prior to placing any reliance upon the Information. The Information may change and any property described in the Information may be withdrawn from the market at any time without notice or obligation to the recipient from CBRE. CBRE and the CBRE logo are the service marks of CBRE Limited and/or its affiliated or related companies in other countries. All other marks displayed on this document are the property of their respective owners. All Rights Reserved.

Mapping Sources: Canadian Mapping Services canadamapping@cbre.com; DMTI Spatial, EnviroNics Analytics, Microsoft Bing, Google Earth

CBRE