

A photograph of a modern, multi-story office building with a glass and white facade, located at 595 Howe Street in Vancouver, BC. The building is surrounded by other city buildings and a clear blue sky with some clouds. A street sign for 'Dunsmuir St.' is visible in the foreground.

595 Howe Street | Vancouver, BC

FOR LEASE | **Good Earth Building**

Opportunity to lease office space in the heart of the downtown financial core. The Good Earth Building is within one block of Pacific Centre as well as public transportation with all major bus routes and SkyTrain. The building amenities include access to high-speed Internet/fiber optics.

The RGD Team:

Rob DesBrisay

Managing Partner

604 691 6602

rdesbrisay@naicommercial.ca

Irene Yung

Director of Operations

604 691 6606

iyung@naicommercial.ca

NAI Commercial

1075 W Georgia St, Suite 1300

Vancouver, BC V6E 3C9

+1 604 683 7535

naicommercial.ca

Good Earth Building

595 Howe Street

Vancouver, BC

Location

The Good Earth Building is located in the heart of Downtown Vancouver at the corner of Dunsmuir and Howe Streets. Pacific Centre, Downtown Vancouver's largest shopping mall, is located directly across the street with an abundance of additional retail amenities surrounding the property. Access to public transportation is outstanding with all major bus routes and SkyTrain within one block of the property.

Available Units

Unit	Availability	Size
308	Immediate	1,649 SF
Nicely finished southwest corner with four offices on the window and a larger one window meeting room and a kitchen area.		
506	Immediate	2,452 SF
Stunning southwest corner unit with sleek plank flooring. Boasts four private offices, a dedicated phone booth room, and a modern open-concept kitchen.		
702	Immediate	812 SF
Rare small corner suite open plan, facing south and east. Fantastic small corner suite.		
1000	Immediate	7,642 SF
Rare full floor, 17 perimeter offices, two boardrooms, and a lunch room.		



Property Details

Lease Rate
\$20.00/SF – \$29.00/SF

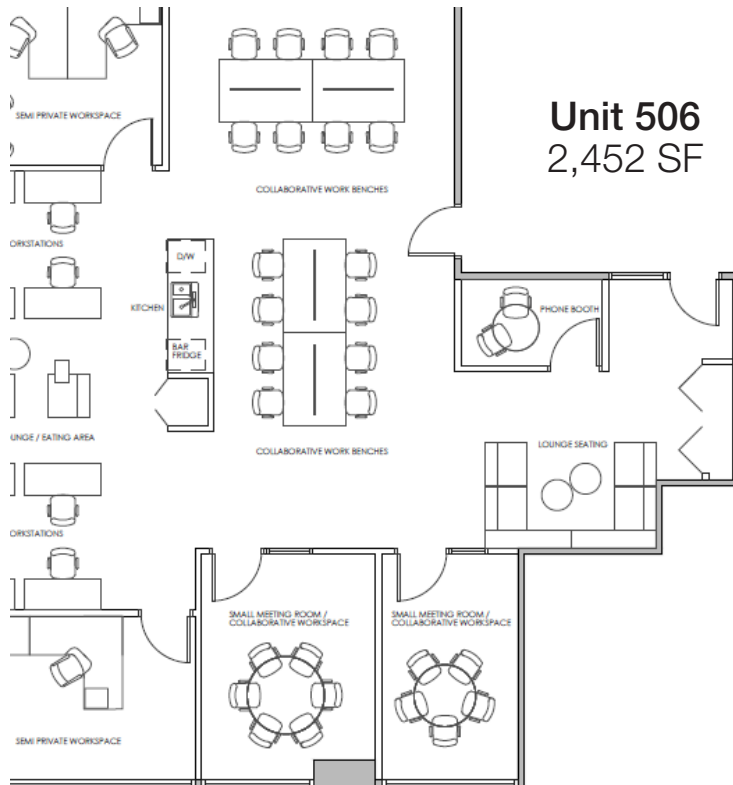
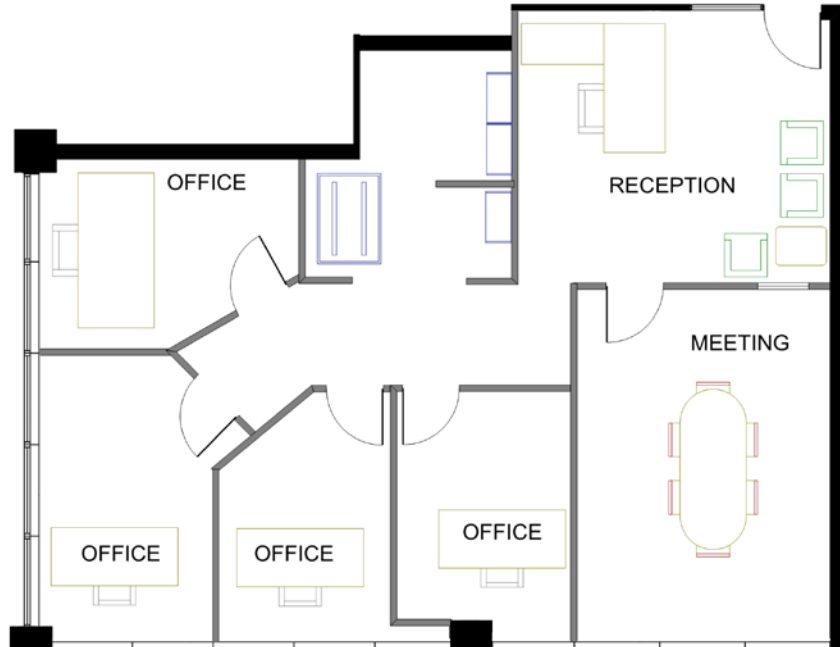
Additional Rent
\$21.05/SF (2026 estimate)

Features

- ▶ Café with patio seating
- ▶ On-site management
- ▶ Premium retail access with Pacific Centre directly across the street
- ▶ Located in the heart of the downtown financial core
- ▶ Access to high speed Internet/fiber optics
- ▶ All major transportation links within a one block radius
- ▶ 70% of all major downtown office complexes located within a five minute walking distance

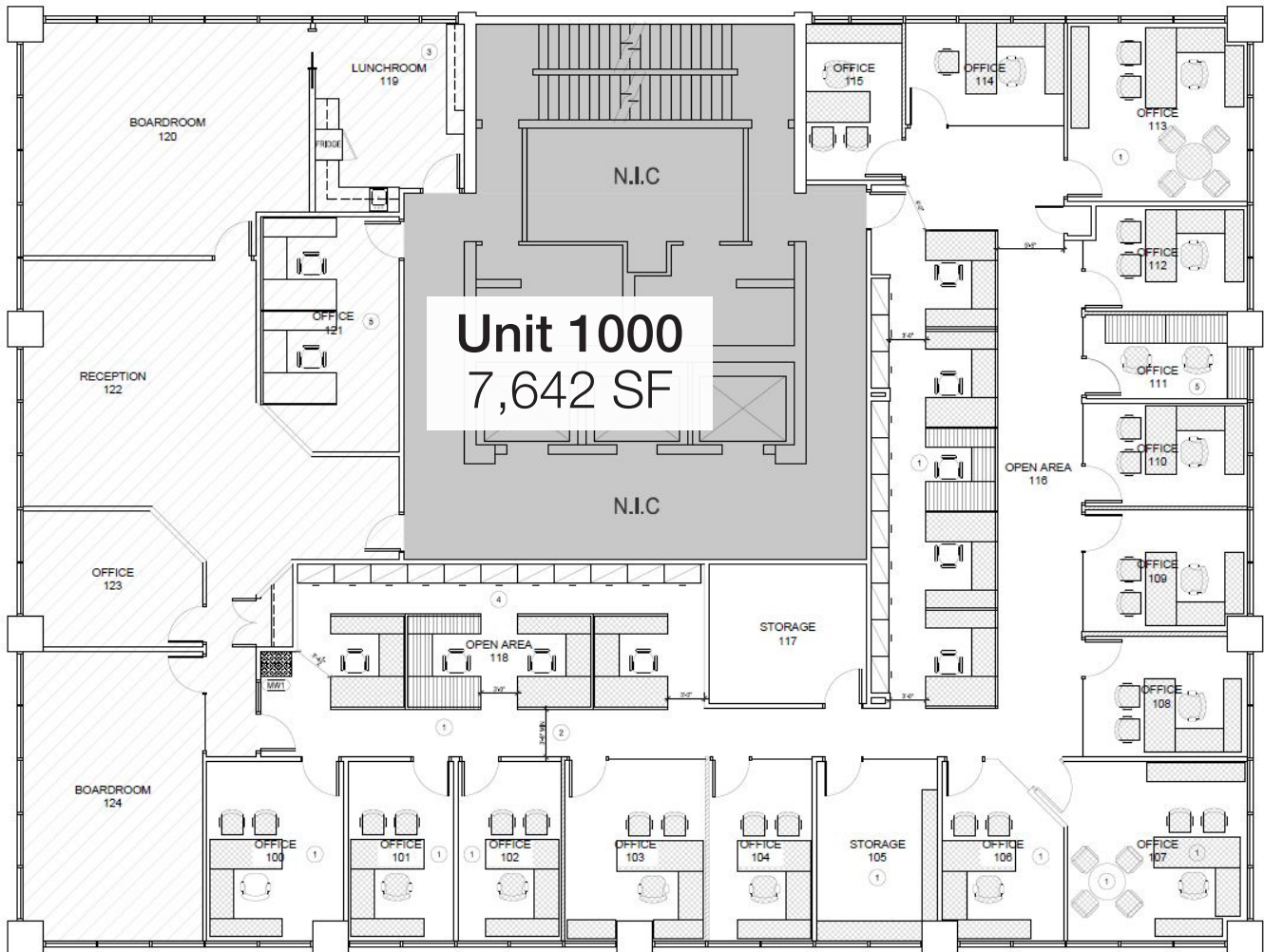
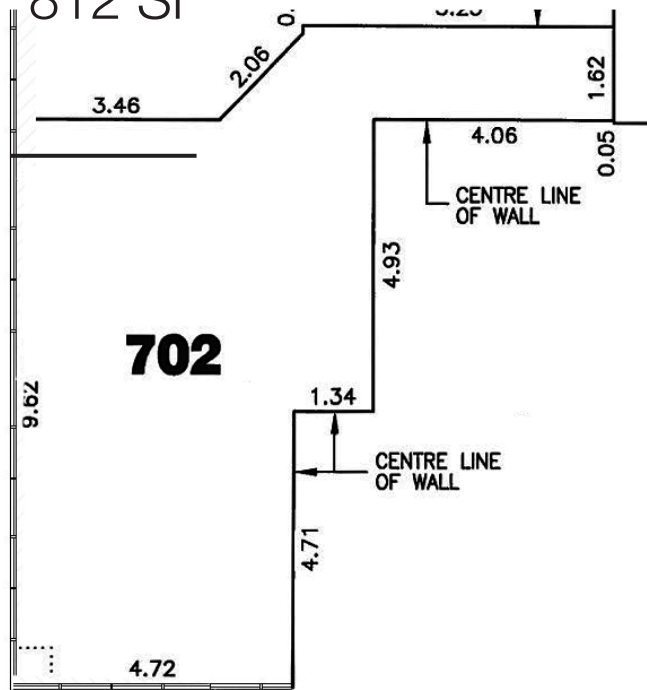
NAI Commercial

Unit 308
1,649 SF



Unit 702

812 SF





BMO

bental
centre

Scotiabank

WATERFRONT

595
HOWE

pacific
centre

GRANVILLE

VANCOUVER CITY CENTRE

98
100

The RGD Team:

Rob DesBrisay
Managing Partner
604 691 6602
rdesbrisay@naicommercial.ca

Irene Yung
Director of Operations
604 691 6606
iyung@naicommercial.ca

NAI Commercial

NAI Commercial
1075 W Georgia St, Suite 1300
Vancouver, BC V6E 3C9
+1 604 683 7535
naicommercial.ca

No warranty or representation, express or implied, is made as to the accuracy of the information contained herein, and the same is submitted subject to errors, omissions, change of price, rental or other conditions, prior sale, lease or financing, or withdrawal without notice, and of any special listing conditions imposed by our principals no warranties or representations are made as to the condition of the property or any hazards contained therein are any to be implied. Aerial image(s) courtesy of Google, Landsat/Copernicus