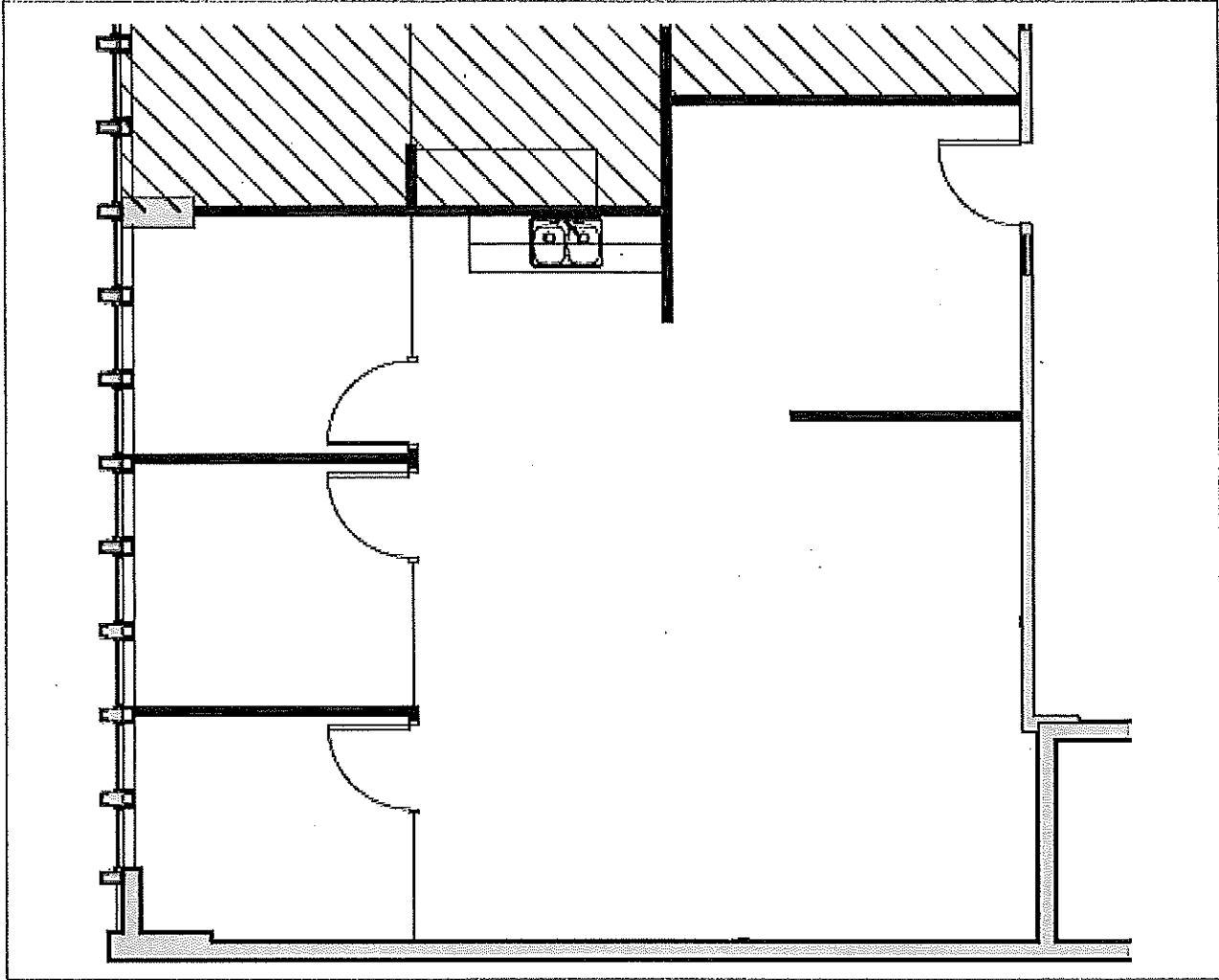
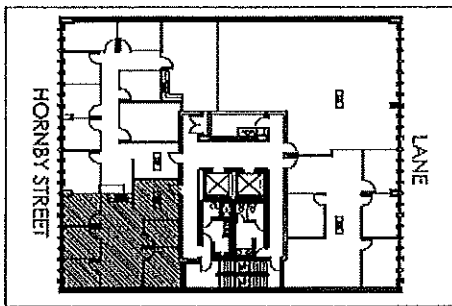


580 HORNBY

N1



Floor plans are not to scale



SUITE	TYPICAL FLOOR	RENTABLE AREA
510	6,819 sqft	1,142 sqft
CONSTRUCTED	TOTAL BUILDING AREA	NUMBER OF FLOORS
1986	56,114 sqft	9 + Basement



Colin Murray
President

West Pender Property Group
230 - 830 West Pender Street
Vancouver, BC V6C 1J8

Main: 604-683-2141
Direct: 604-638-0327
cmurray@westpenderproperty.com