

130 Brew Street, Port Moody, BC

# Plug-n-Play Class A Office for Sublease

*In the Heart of Suter Brook Village's Premier Master-Planned Community*

**James Morris**

Personal Real Estate Corporation  
Associate Vice President  
+1 778 323 6490  
james.morris@colliers.com

**Jennica Palecek**

Personal Real Estate Corporation  
Associate Vice President  
+1 778 888 0285  
jennica.palecek@colliers.com



# Property Overview

## Building Highlights



**Class A Office Tower**



**Fully Built Out and Furnished**



**Improved Space**



**Steps to Inlet Centre Station**

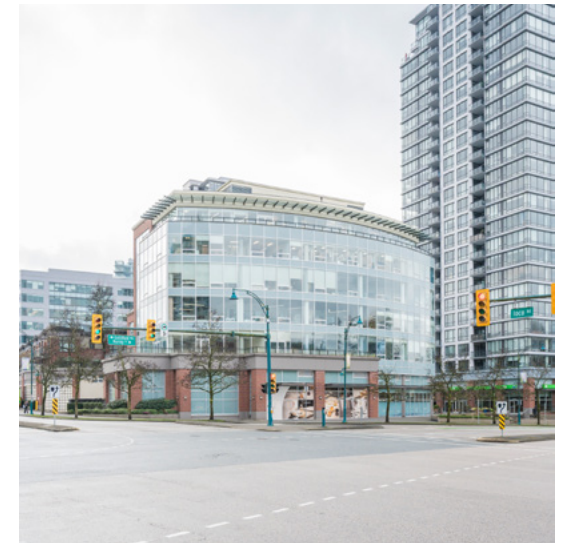


**Surrounded by Established Restaurants, Cafes, and Recreation**

Suter Brook Village Office North is a 9-storey, 50,000+ SF Class A office tower developed as part of Onni Group's 22-acre master-planned community in Port Moody. The building offers high-quality common areas, professional lobby presence, and a vibrant ground-floor retail podium, all within a thriving live-work neighbourhood of approximately 5,000 residential units and four master-planned communities.

Steps from the Millennium Line's Inlet Centre Station, the building offers direct SkyTrain access across Metro Vancouver. The building also benefits from proximity to Highway 7A and strong bus connectivity throughout the Tri-Cities.

<b>Property Address</b>	130 Brew Street, Port Moody, BC
<b>Suite</b>	303
<b>Area</b>	3,191 SF
<b>Net Rent</b>	Please contact listing agents
<b>Additional Rent (2026 Est.)</b>	\$17.39/SF
<b>Available</b>	Immediately
<b>Sublease Expiry</b>	January 17, 2029
<b>Parking</b>	5 unreserved stalls at market rates
<b>Improvements</b>	2 private offices & 1 boardroom Open area Kitchen Reception Copy room Private washroom

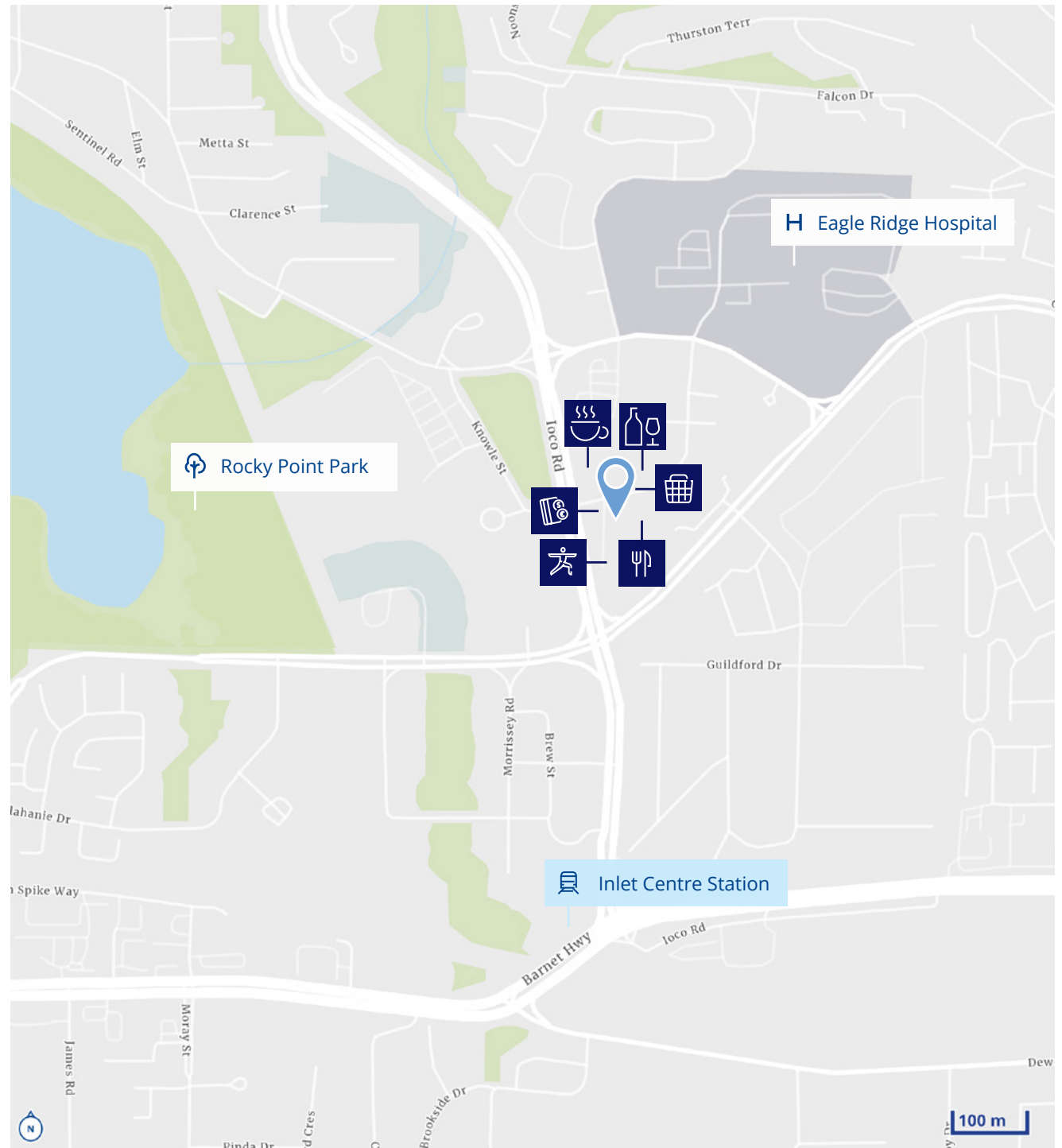


# Location Overview

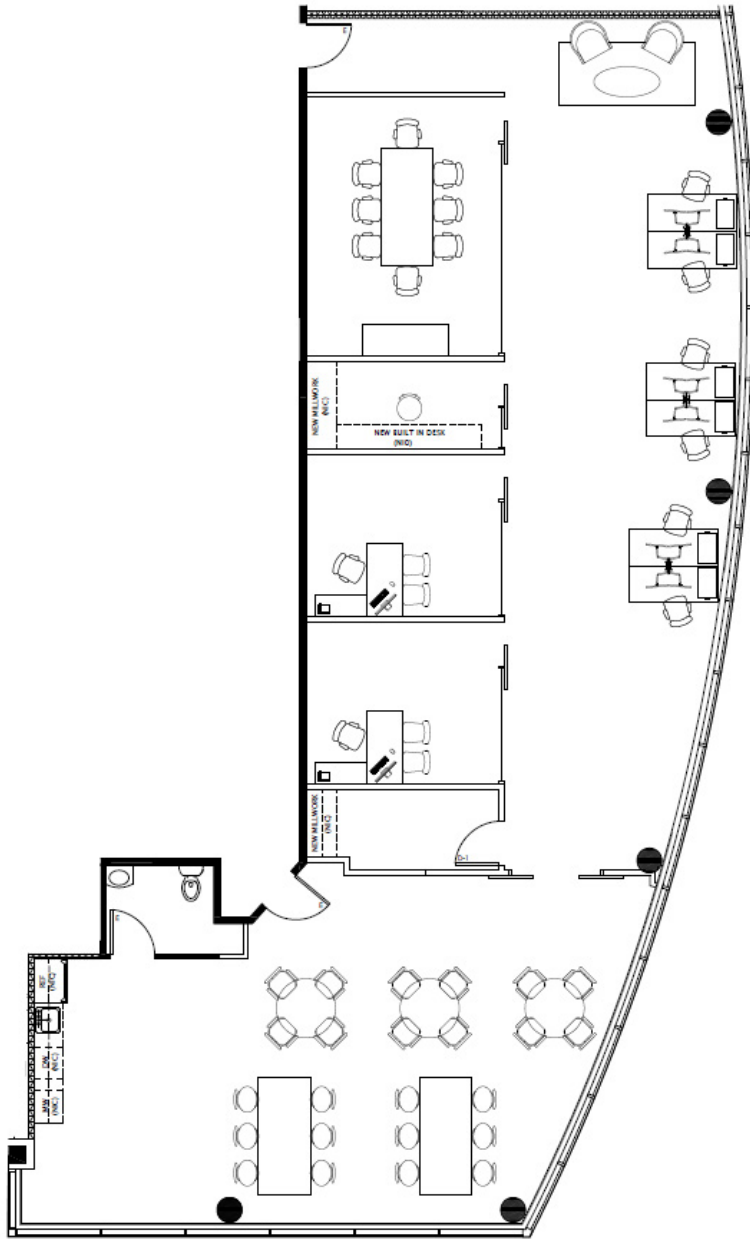
Tenants at Suter Brook Village enjoy one of the most complete amenity ecosystems in the suburban Metro Vancouver market.

## Steps from the Front Door

-  TD Canada Trust and Vancity
-  BCLIQUOR
-  Sushi Mura, Romer's Burger Bar, and additional dining options
-  Starbucks and JJ Bean
-  Orangetheory Fitness
-  Thrifty Foods



# Floor Plan



## Suite 300

- 2 Private Offices
- 1 Boardroom
- Open Area
- Kitchen
- Reception
- Copy Room
- Phone Room
- Private Washroom

3,191  
square feet  
available



View Virtual Tour



Boardroom



Private Office



Kitchen



Open Area



Street View



Suite Entrance



130 Brew Street, Port Moody, BC

**James Morris**

Personal Real Estate Corporation  
Associate Vice President  
+1 778 323 6490  
james.morris@colliers.com

**Jennica Palecek**

Personal Real Estate Corporation  
Associate Vice President  
+1 778 888 0285  
jennica.palecek@colliers.com

This document has been prepared by Colliers for advertising and general information only. Colliers makes no guarantees, representations or warranties of any kind, expressed or implied, regarding the information including, but not limited to, warranties of content, accuracy and reliability. Any interested party should undertake their own inquiries as to the accuracy of the information. Colliers excludes unequivocally all inferred or implied terms, conditions and warranties arising out of this document and excludes all liability for loss and damages arising there from. This publication is the copyrighted property of Colliers and/or its licensor(s). Copyright © 2026. All rights reserved. This communication is not intended to cause or induce breach of an existing listing agreement. Colliers Macaulay Nicolls Inc., Brokerage.



[collierscanada.com](https://www.collierscanada.com)