

"Client"

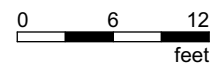
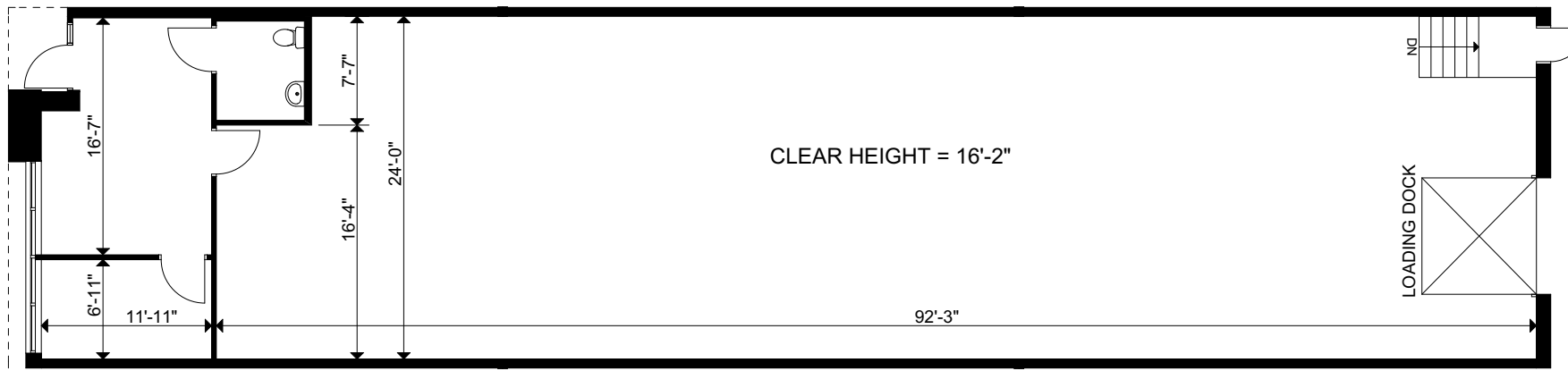
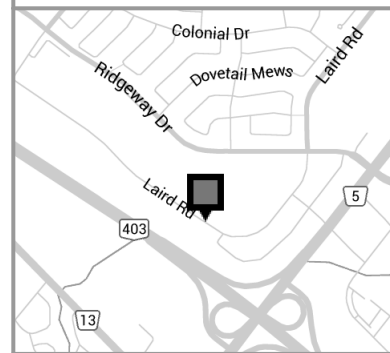


Version:	Prepared:	11/07/2025
V2	Measured:	12/12/2012

3495 Laird Road
Mississauga, Ontario

Unit 19

Office Area:	408 sq ft
Warehouse Area:	2,268 sq ft
Total Rentable Area:	2,676 sq ft



This work product has been prepared by Extreme Measures Inc. pursuant to a contract with the Client for the sole benefit of and use by the Client. No third party may rely on this work product without the receipt of a reliance letter from Extreme Measures Inc.