

# 140 6751 GRAYBAR ROAD, RICHMOND

## ZI17 ZONED WAREHOUSE

# FOR LEASE

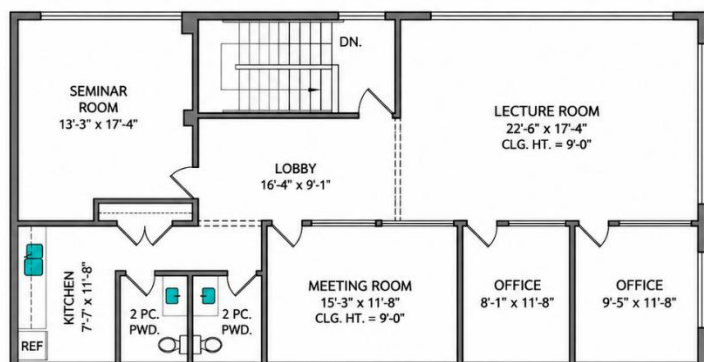
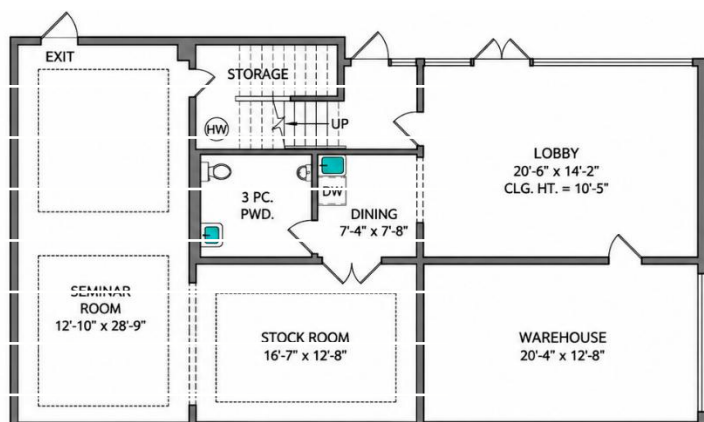
Sale Price:  
Base Rent: \$23.00/sqft  
Additional rent: \$6.00/sqft

Warehouse Size 3,135 SQ FT

Zoning ZI17

Property Taxes \$10,941.97

PID 016-460-171



## PROPERTY DETAILS

This two level 2,886 sqft warehouse is ideally situated in East Richmond's industrial and office area along the Annacis Channel. The ZI17 zoning allows for general and heavy industrial uses, and marina uses.

### Property Features:

- **Size:** 3,135 sqft - 1,512 SF Main Level and 1,623 SF Upper Level
- **Zoning:** ZI17 (Ideal for general, heavy industrial uses and marina)
- **Loading:** Grade level Loading

This property can be leased or purchased.

This versatile property is perfect for businesses seeking a strategic location with easy access to major transportation routes. Contact us today for more information and to schedule a viewing.

Aamir Cockar  
604.968.0840  
[aamir@aamircockar.com](mailto:aamir@aamircockar.com)  
OAKWYN REALTY LTD

