

PRIME COMMERCIAL SPACE FOR LEASE

6074

Lady Hammond Road

Halifax, NS



CBRE

Location

LOCATION

6074 Lady Hammond Road,
Halifax

PROPERTY TYPE

Office building

SIZES AVAILABLE

Ground floor: 1,500 sq. ft.

NET RENT

please contact

CLEANING

Tenants Responsibility

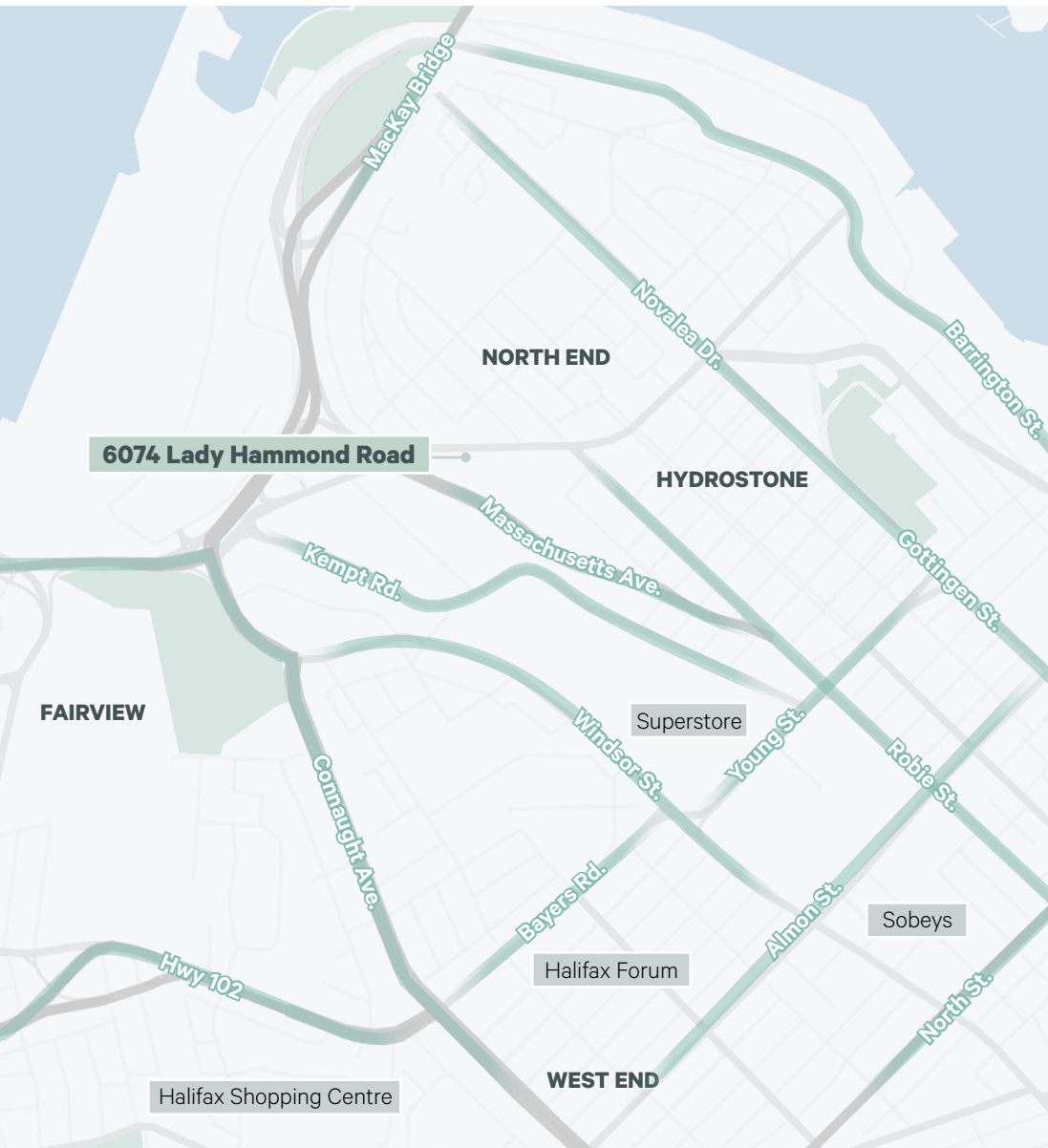
PARKING

Free on-site

Ideally located on Lady Hammond Road in the ever-popular North End of Halifax, this five storey office building features an available ground floor 1,500 SF unit.

The surrounding area consists of established neighbourhoods, the Hydrostone District and is home to a wide range of retailers, services, shops, grocery, gas and amenities. With over 1,000 new residential units approved or under construction, North End Halifax is one of Nova Scotia's fastest growing communities. Not only is it a demand area for residential, the same can be said for business; demonstrated by the area hosting more than 350 businesses as part of the North End Business Association.

All units subject to final measurement.



MARKET SNAPSHOT (3KM)



POPULATION

70,573



MEDIAN AGE

37



AVERAGE HOUSEHOLD
INCOME

\$81,773



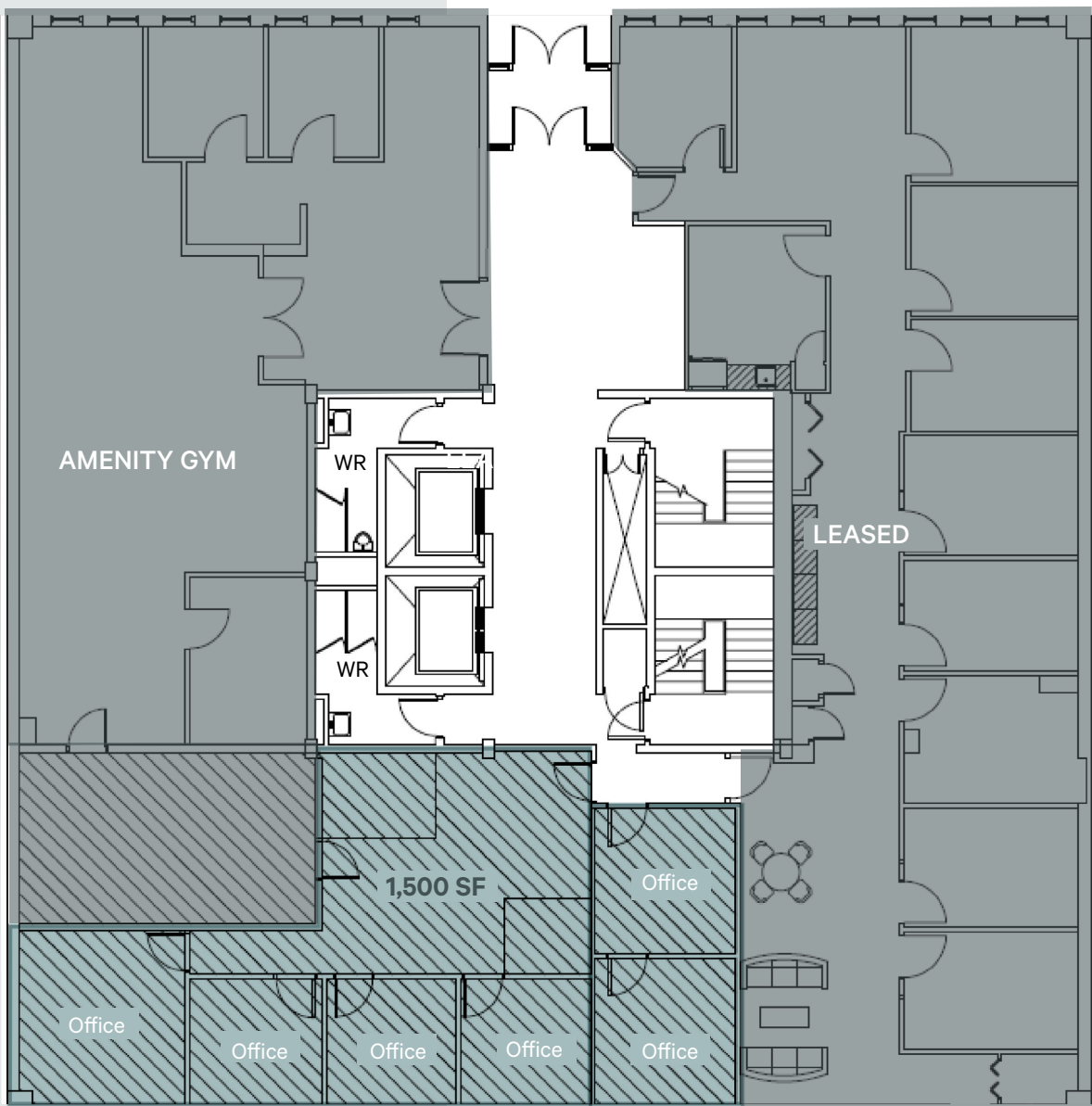
NORTH END
BUSINESSES

350+

Ground Floor

1,500 sq. ft.

- Six (6) private offices
- Dedicated gym, free for all tenants featuring high end equipment





For more information, please contact:

Mat Houston

Vice President

T 902 492 2074

mathew.houston@cbre.com

Breanna MacRury

Sales Support Coordinator

T 902 492 2082

breanna.macrury@cbre.com

CBRE

This disclaimer shall apply to CBRE Limited, Real Estate Brokerage, and to all other divisions of the Corporation; to include all employees and independent contractors ("CBRE"). All references to CBRE Limited herein shall be deemed to include CBRE, Inc. The information set out herein, including, without limitation, any projections, images, opinions, assumptions and estimates obtained from third parties (the "Information") has not been verified by CBRE, and CBRE does not represent, warrant or guarantee the accuracy, correctness and completeness of the Information. CBRE does not accept or assume any responsibility or liability, direct or consequential, for the Information or the recipient's reliance upon the Information. The recipient of the Information should take such steps as the recipient may deem necessary to verify the Information prior to placing any reliance upon the Information. The Information may change and any property described in the Information may be withdrawn from the market at any time without notice or obligation to the recipient from CBRE. CBRE and the CBRE logo are the service marks of CBRE Limited and/or its affiliated or related companies in other countries. All other marks displayed on this document are the property of their respective owners. All Rights Reserved.