

**BUREAUX - À LOUER**

DISPONIBLE au 2<sup>ème</sup> étage

Suite 260 : **1 600 pi.ca.**, composé de 6 bureaux fermés, salle de conférence et cuisinette

Suite 285 : **1 280 pi.ca.**, aire ouverte, livré format coquille

**TAUX DE LOCATION :**

(# 260) **18.00 \$ / pi.ca. / SEMI-BRUT**, plus TPS/TVQ

(# 285) **14.00 \$ / pi.ca. / SEMI-BRUT**, plus TPS/TVQ



Exclus : électricité (compteur), entretien A/C, stationnement extérieur et améliorations locatives

Pour plus de détails / for further information

**TOMMASO ROSELLI**, B. Comm.

Courtier immobilier agréé, DA  
Chartered Real Estate Broker, AEO

**OFFICE SPACE - FOR LEASE**

AVAILABLE on 2<sup>nd</sup> floor

Suite 260: **1,600 sq.ft.**, composed of 6 closed offices, conference room and a kitchenet

Suite 285: **1,280 sq.ft.**, open space, remit as base building

**ASKING RENTAL RATE :**

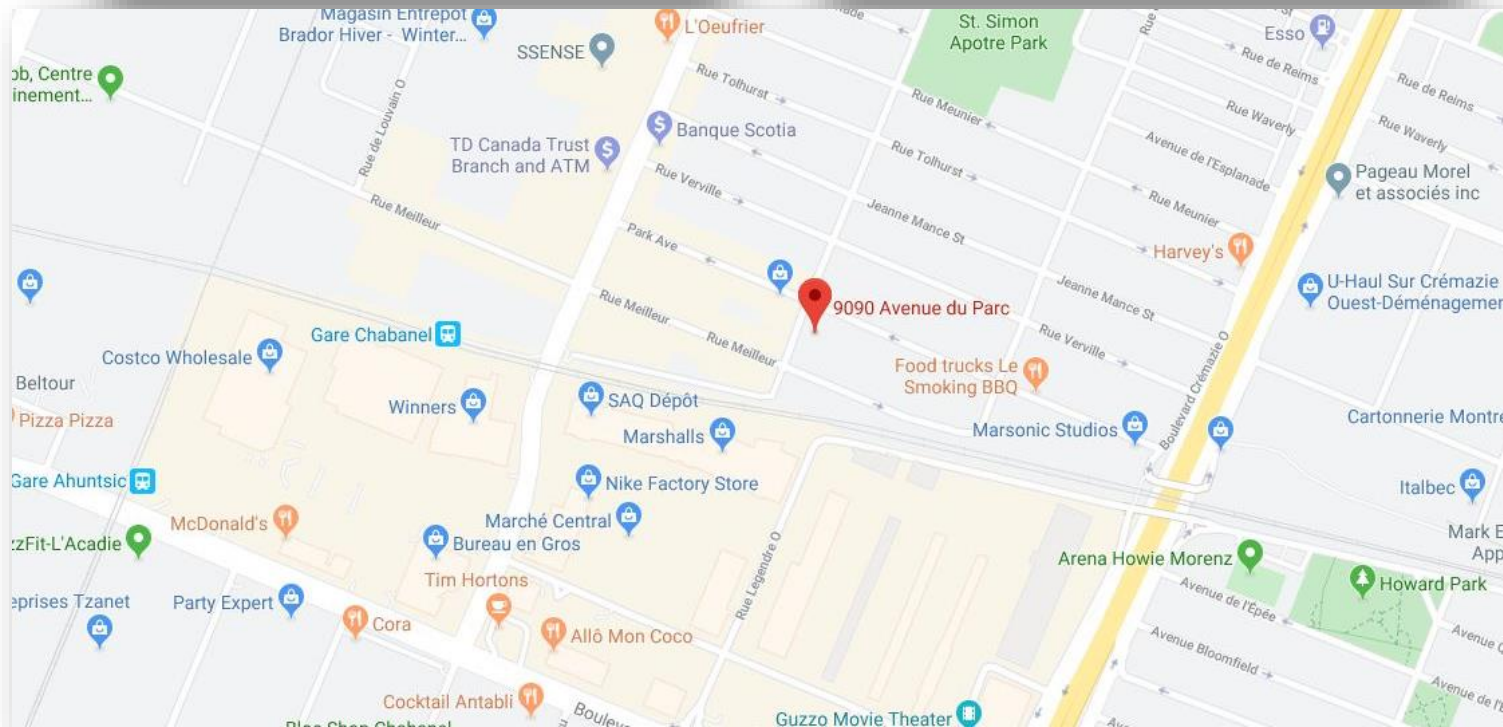
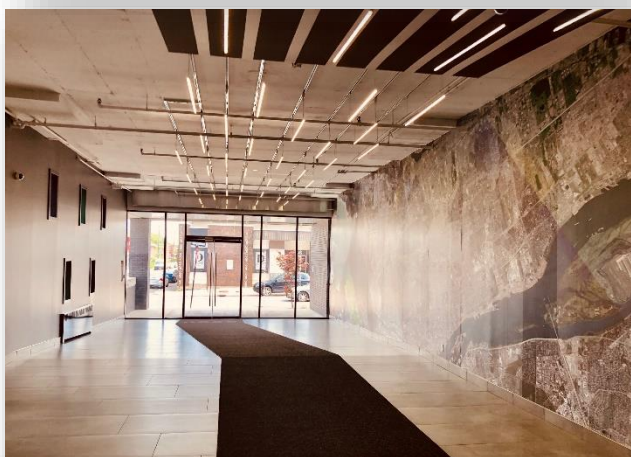
(# 260) **\$ 18.00 / sq.ft. / SEMI-GROSS**, plus GST/QST

(# 285) **\$ 14.00 / sq.ft. / SEMI-GROSS**, plus GST/QST

Excluded : Electricity (meter), HVAC maintenance, exterior parking and leasehold improvements

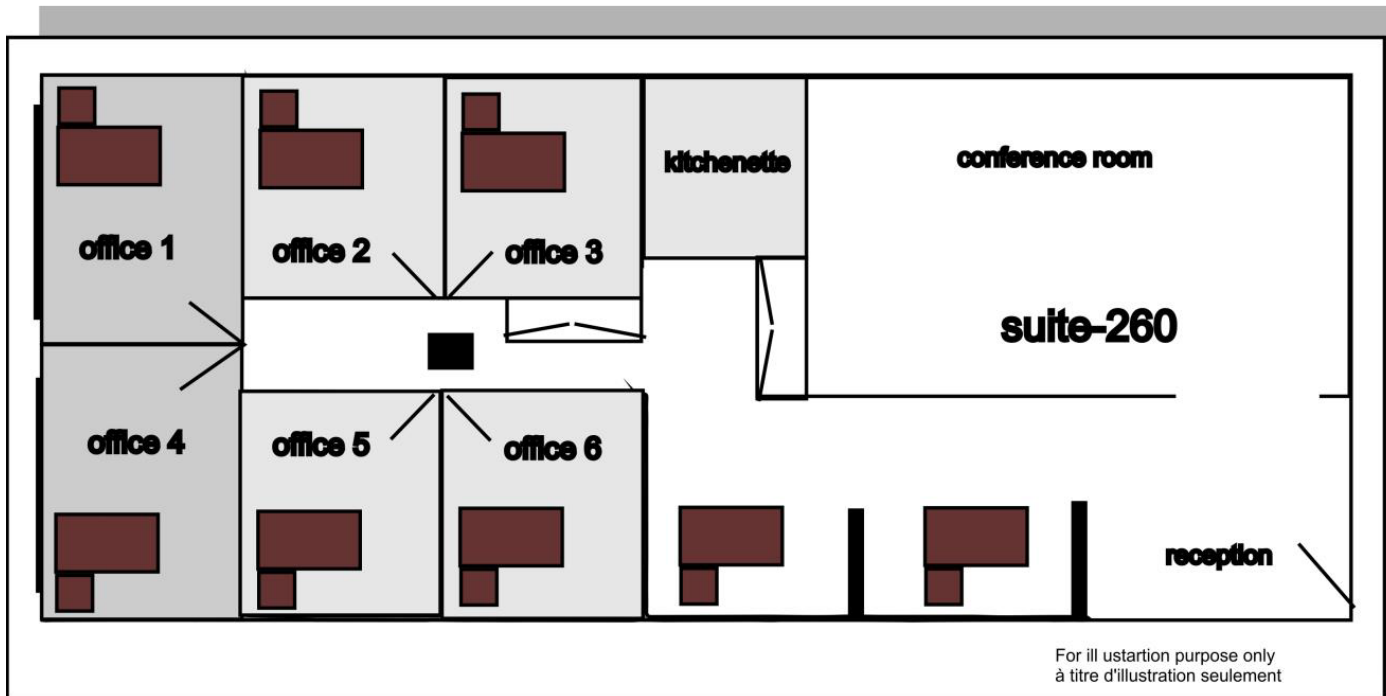
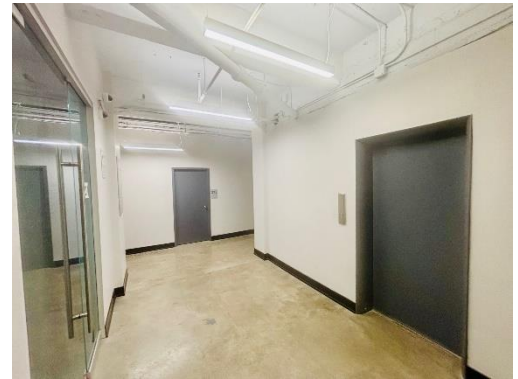
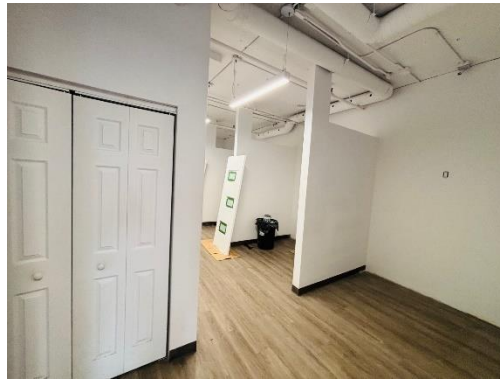


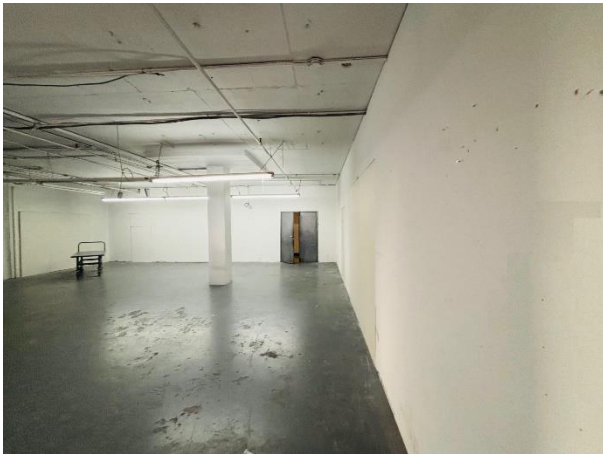
Gare Chabanel (St-Jérôme) / Gare Ahuntsic (Mascouche)





**Suite 260**





**Suite 285**

