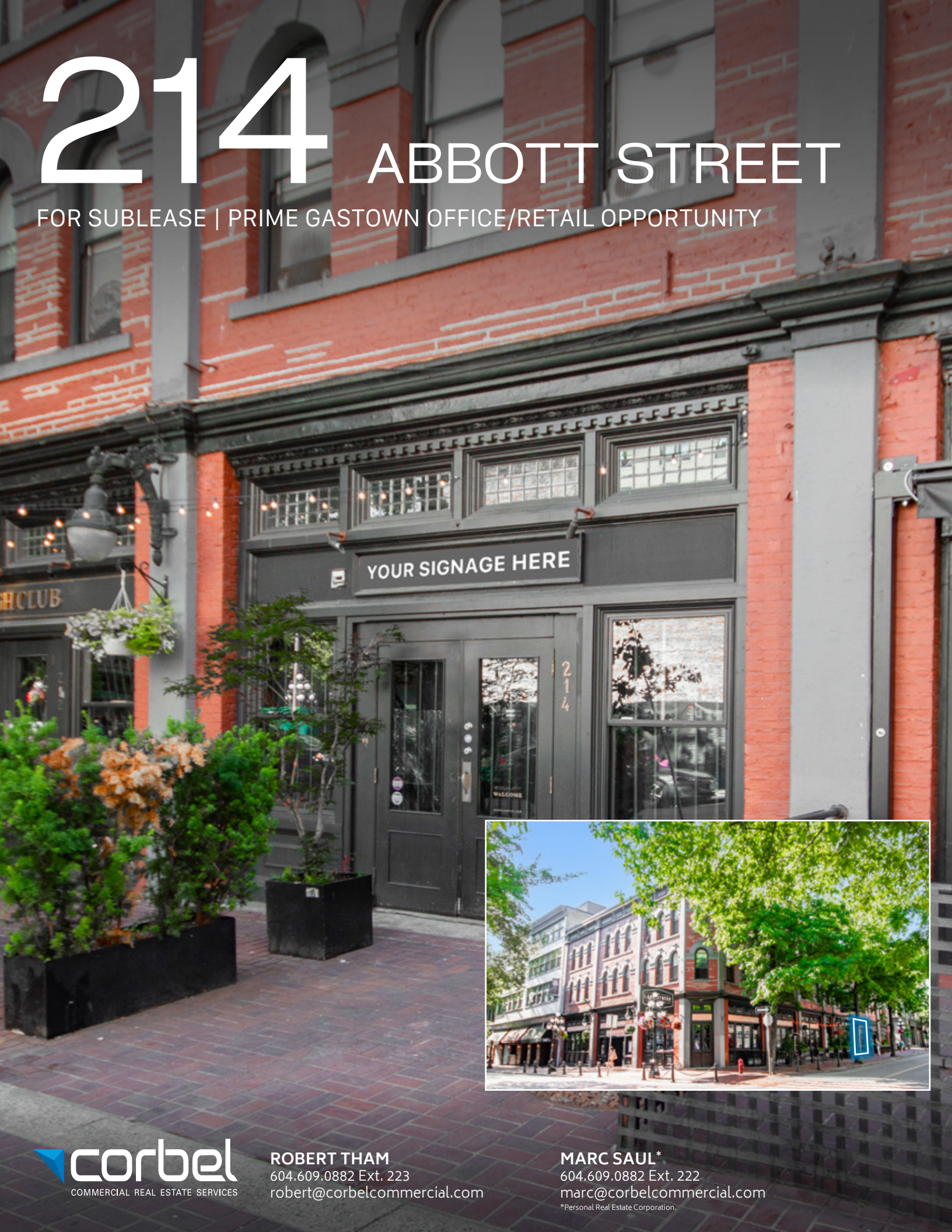


214 ABBOTT STREET

FOR SUBLEASE | PRIME GASTOWN OFFICE/RETAIL OPPORTUNITY





SALIENT FACTS

SIZE

924 SF (Approx.)

BASIC RENT

\$50.00 PSFPA

ADDITIONAL RENT

\$22.51 (2025 est.)

GROSS RENT

\$5,583,27/month + GST

AVAILABILITY

Immediately

ZONING

HA-2 (Gastown Historic Area)

¹All sizes are approximate and subject to verification.



THE LOCATION

Gastown is an internationally-renowned heritage zone, both a bustling tourist destination and a trendy gathering place for locals. Characterized by cobblestone streets, brick and timber heritage buildings and abundant historical charm, the high-traffic neighbourhood houses many of the city's hottest restaurants and retail stores. Gastown has also become home to numerous design studios, technological and software companies, and leading architectural firms. Popular venues in the area include L'Abattoir, Twisted Fork Bistro, and LOCAL Gastown. The location is served by several transit routes and is in close proximity to the SeaBus terminal, Waterfront SkyTrain Station, the West Coast Express and several public parkades.

FEATURES



Exceptional retail unit located in the heart of historic Gastown, adjacent to the Lamplighter Pub



Beautifully restored heritage building with a character store front



Large retail storefront providing excellent visibility to passersby



Excellent ceiling heights throughout



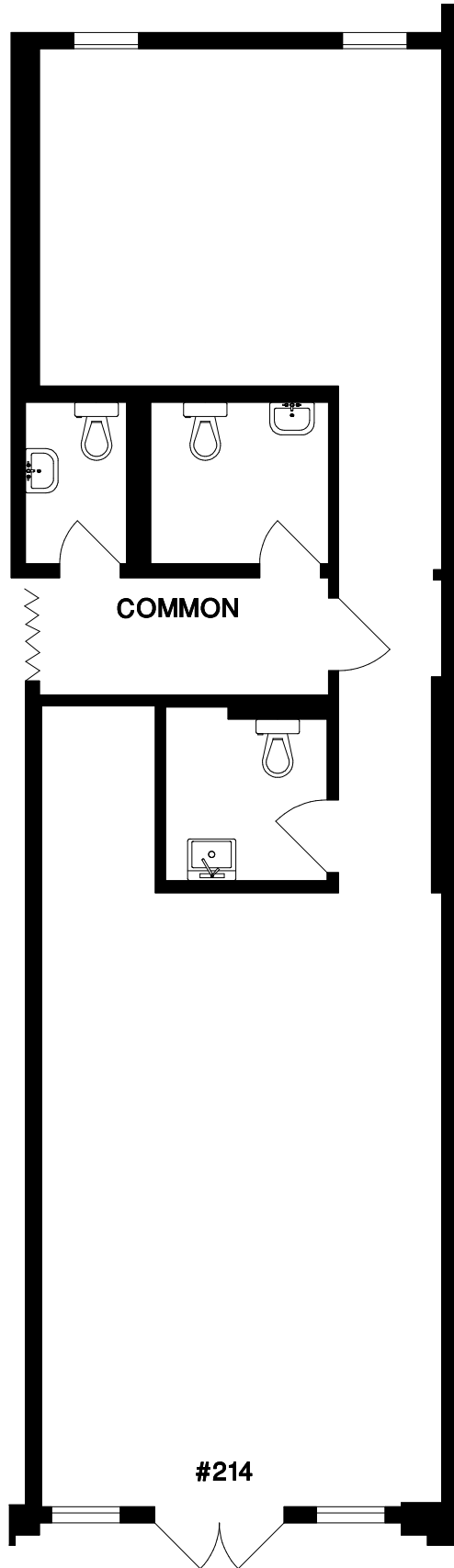
Previously improved for a barbershop/salon use complete with a handwashing station and in-suite plumbing



Private washroom (handicap accessible)



Located in a high foot and vehicle traffic area, surrounded by numerous boutique retailers, popular cafés, and lounges



*Floor plan may not be 100% accurate and is subject to verification.

DINING + COCKTAILS

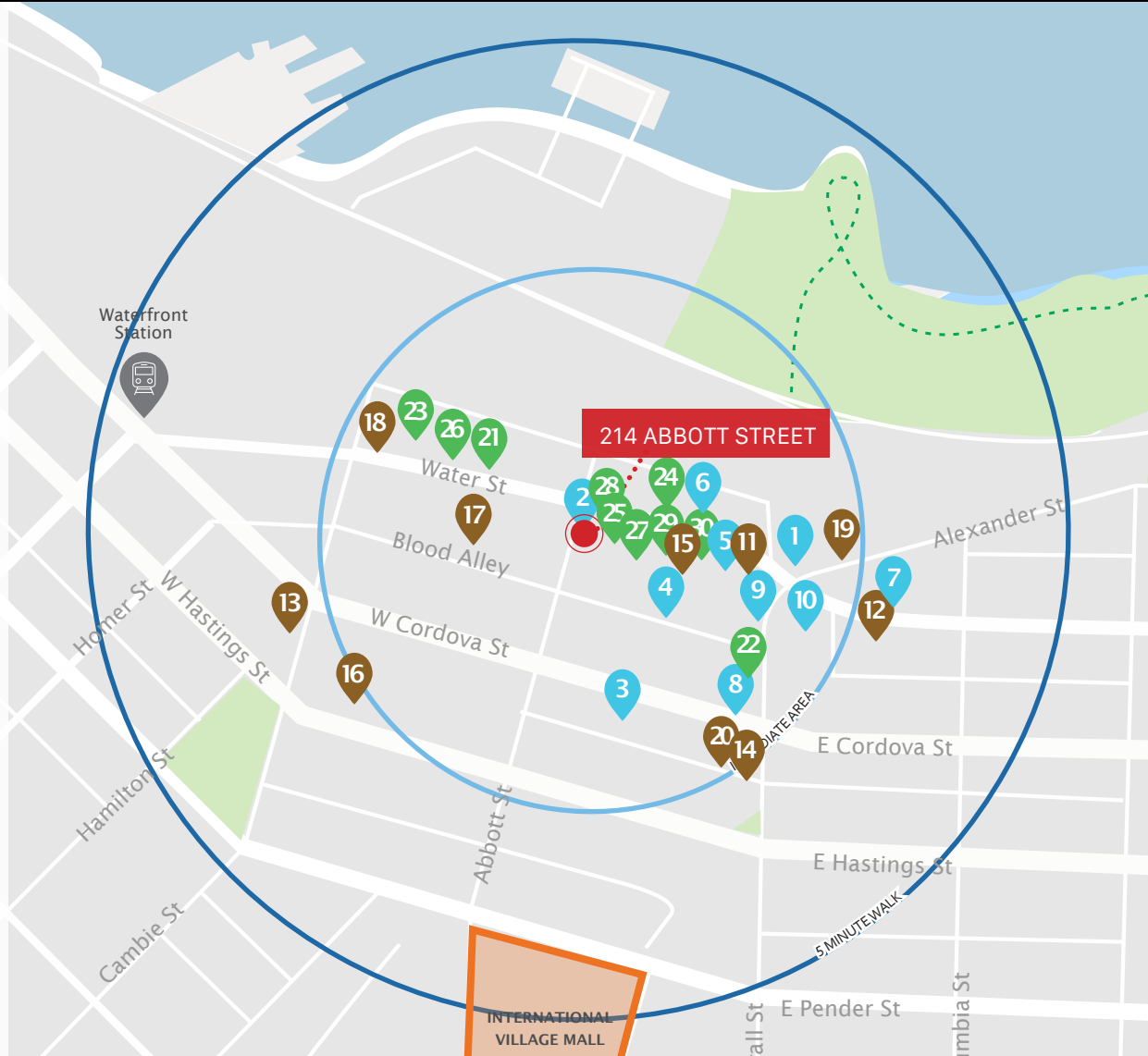
- 1. LOCAL Gastown
- 2. The Lamplighter Public House
- 3. GRETA Bar YVR
- 4. Is That French
- 5. Röösh
- 6. The Old Spaghetti Factory
- 7. Zoomak Korean Tavern
- 8. Kozak Ukrainian Restaurant
- 9. L'Abattoir
- 10. Robba da Matti

COFFEE + CASUAL FARE

- 11. Chocolats Favoris
- 12. Milano Espresso Lounge
- 13. Revolver
- 14. East Van Roasters
- 15. Meet in Gastown
- 16. Purebread
- 17. Café Kitsuné
- 18. Lee's Donuts
- 19. Soft Peaks Ice Cream
- 20. Nelson the Seagull

SHOPPING

- 21. OAK + FORT
- 22. Le Labo
- 23. Kit and Ace
- 24. John Fluevog Shoes
- 25. COS
- 26. Maison Kitsuné
- 27. Vinyl records
- 28. Informs Interior
- 29. NEIGHBOUR
- 30. RODEN GRAY



Stadium-Chinatown Station

97 Walker's Paradise
Daily errands do not require a car

100 Rider's Paradise
World-class public transportation

Data sourced from walkscore.com



Chocolats Favoris



L'Abattoir



Lee's Donuts



Maison Kitsuné

YOUR SIGNAGE HERE

214

CONTACT US FOR MORE INFORMATION

ROBERT THAM
604.609.0882 Ext. 223
robert@corbelcommercial.com

MARC SAUL PREC
604.609.0882 Ext. 222
marc@corbelcommercial.com

INFO@CORBELCOMMERCIAL.COM | WWW.CORBELCOMMERCIAL.COM | 632 CITADEL PARADE, VANCOUVER BC, V6B 1X3

Aerial Photography by Tom Kwok, Onikon | Walkscore Source: www.walkscore.com

E. & O. E.: All information contained herein is from sources we deem reliable, and we have no reason to doubt its accuracy; however, no guarantee or responsibility is assumed thereof, and it shall not form any part of any contract. Properties are submitted subject to errors and omissions and all information should be carefully verified. All measurements quoted herein are approximate.