

FOR LEASE

2140-2150 WINSTON PARK DRIVE **OAKVILLE, ON**



PROPERTY DETAILS

- + Prime QEW & Winston Churchill location
- + Office & Industrial suites available
- + Great access to QEW, 403 & 407
- + Zoning: E2 - 434
- + Clear Height: 19'
- + T.M.I. \$5.59 (2018)



CONTACT US

JONATHAN LEARY*

Vice President
+1 905 315 3695
jonathan.leary@cbre.com

DAVID MERKER

Sales Representative
+1 905 315 3676
david.merker@cbre.com

SARAH BOONSTRA

Sales Representative
+1 905 315 3692
sarah.boonstra@cbre.com

MIKE MERRY*

Senior Vice President
+1 905 315 3690
mike.merry@cbre.com

*Sales Representative

www.cbre.ca

dream  **CBRE**

FOR LEASE
2140-2150 WINSTON PARK DRIVE

OAKVILLE, ON



www.cbre.ca

dream  **CBRE**

FOR LEASE 2140-2150 WINSTON PARK DRIVE

OAKVILLE, ON

AVAILABLE OFFICE LISTINGS:

Unit/ Suite No.	Size (sq. ft.)	Asking Rate (sq. ft.)	TMI (2018)	Possession
2150 - Unit 4/5	2,356	\$8.95 Net	\$5.59	Immediate
2150 - Unit 26/27	2,543	\$11.95 Net	\$5.59	Immediate
2150 – Suite 203	465	\$19.95 Gross	N/A	Sept 1, 2018
2140 - Suite 209	605	\$19.95 Gross	N/A	Immediate
2140 - Suite 211	1,760	\$19.95 Gross	N/A	Immediate



AVAILABLE INDUSTRIAL LISTINGS:

Unit/ Suite No.	Size (sq. ft.)	Office Area (sq. ft.)	Industrial Area (sq. ft.)	Asking Rate (sq. ft.)	TMI (2018)	Clear Height (if applicable)	Shipping Doors (if applicable)	Possession
2150 - Unit 7	4,390	±899	±3,491	\$7.25 Net	\$5.59	19'	1 Truck-level & 1 Drive-in door	April 1, 2018
2150 - Unit 8-9	3,952	±426	±3,526	\$7.25 Net	\$5.59	19'	2 Truck-level doors	April 1, 2018
2150 - Units 7-9	8,342	±1,325	±7,017	\$7.25 Net	\$5.59	19'	3 Truck-level & 1 Drive-in door	April 1, 2018
2140 - Unit 19	5,987	±892	±5,095	\$7.25 Net	\$5.59	19'	2 Truck-level doors	Immediate

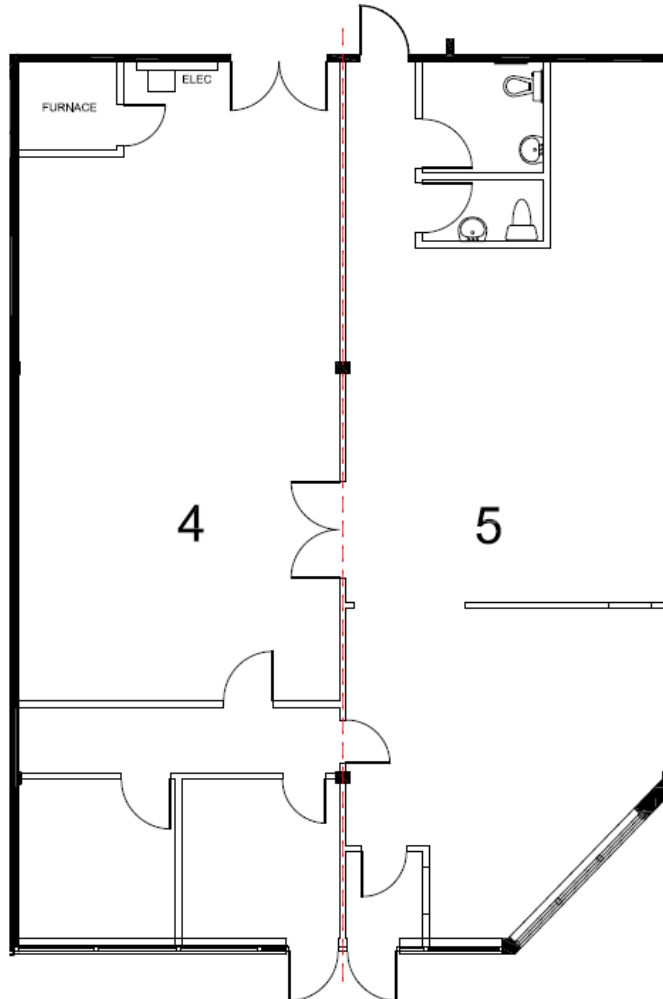
FOR LEASE
2140-2150 WINSTON PARK DRIVE

OAKVILLE, ON

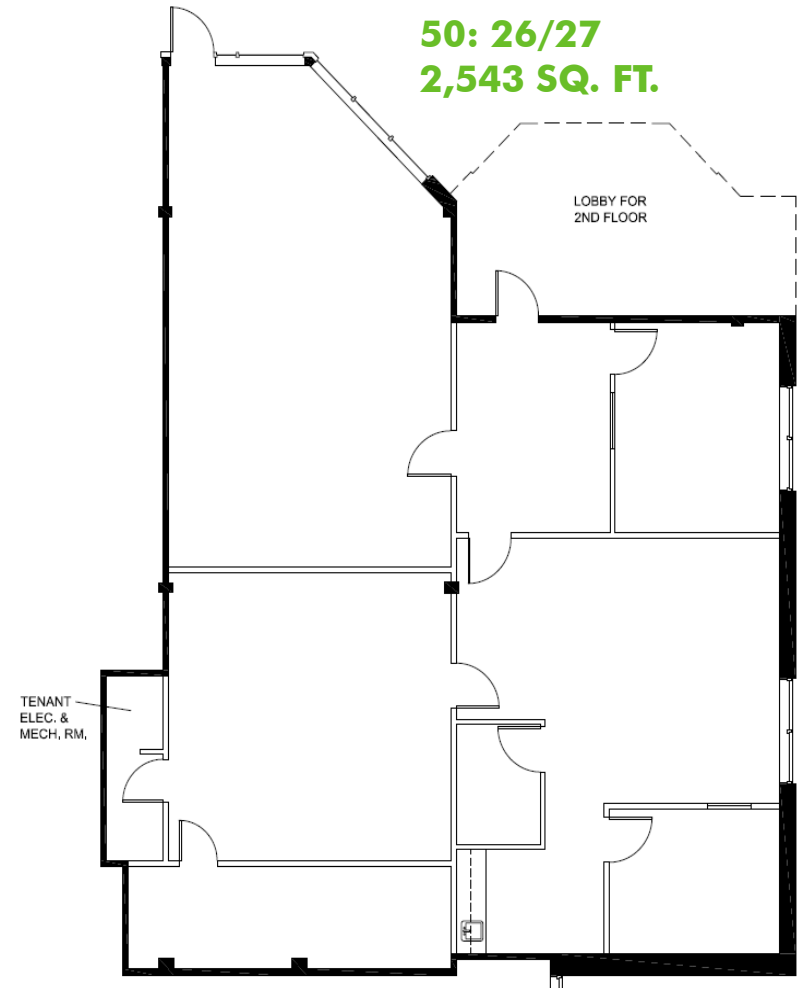


FLOOR PLANS: 2150 WINSTON PARK

**50: Units 4/5
2,356 SQ. FT.**



**50: 26/27
2,543 SQ. FT.**



***Not Exactly as built**

www.cbre.ca

dream  **CBRE**

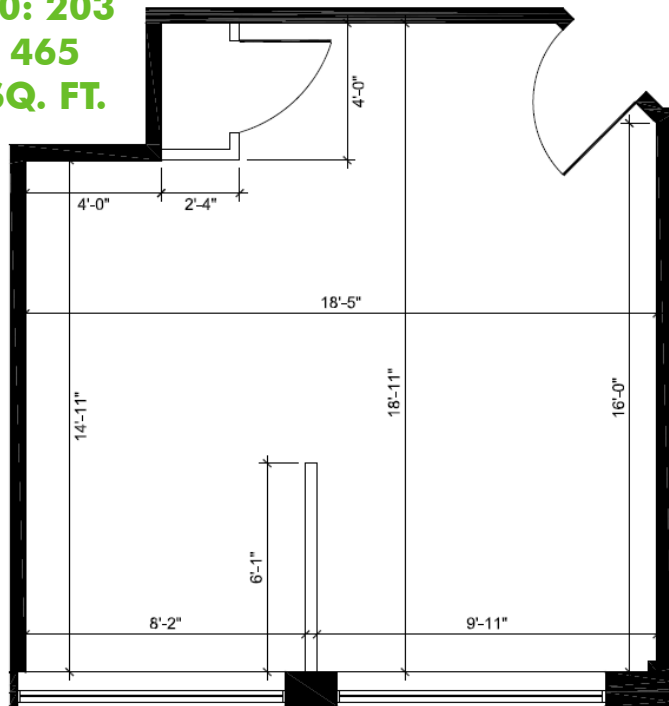
FOR LEASE
2140-2150 WINSTON PARK DRIVE

OAKVILLE, ON

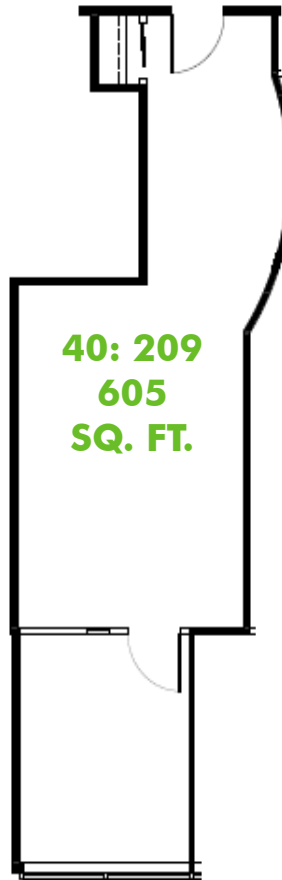


FLOOR PLANS: 2140& 2150 WINSTON PARK

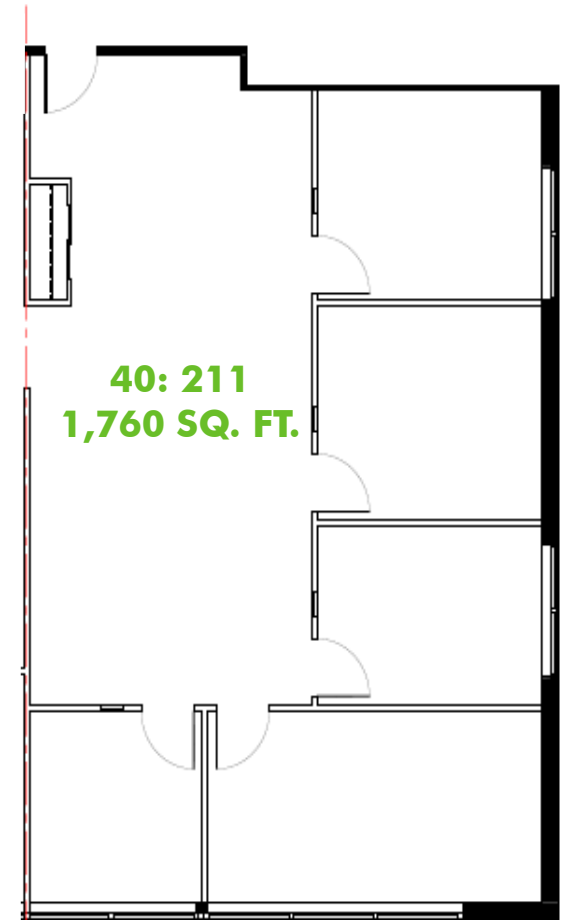
**50: 203
465
SQ. FT.**



**40: 209
605
SQ. FT.**



**40: 211
1,760 SQ. FT.**



***Not Exactly as built**

www.cbre.ca

dream  **CBRE**

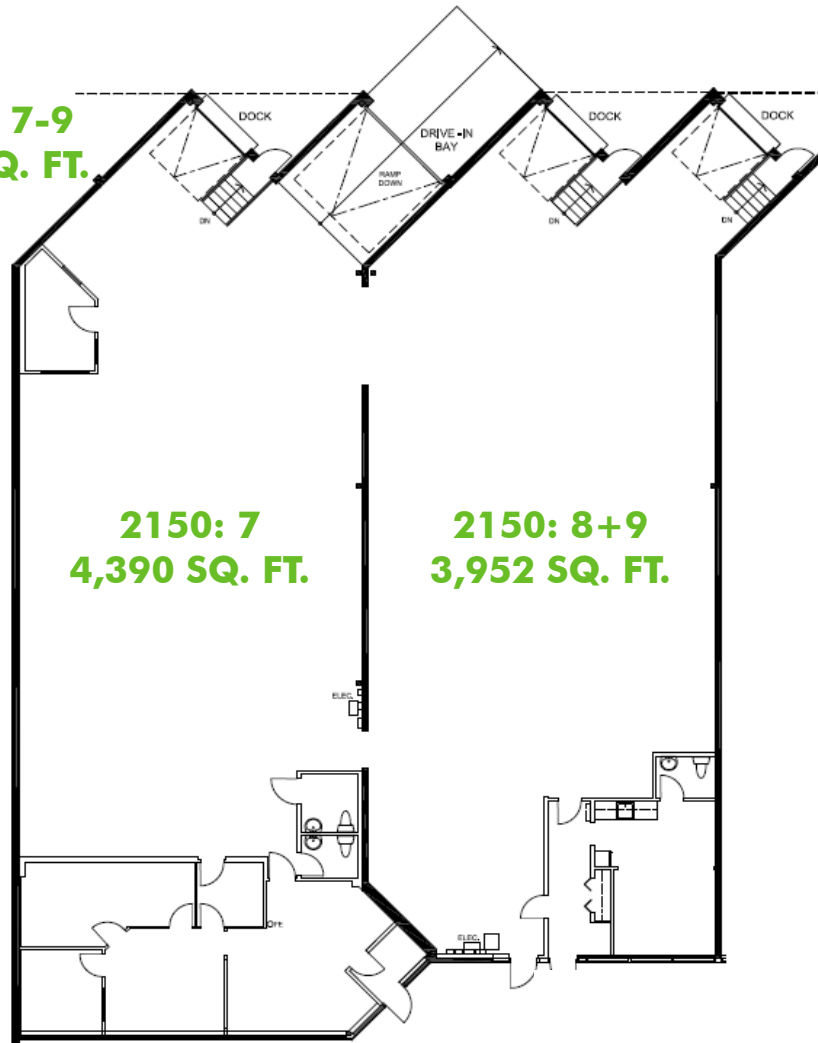
FOR LEASE 2140-2150 WINSTON PARK DRIVE

OAKVILLE, ON

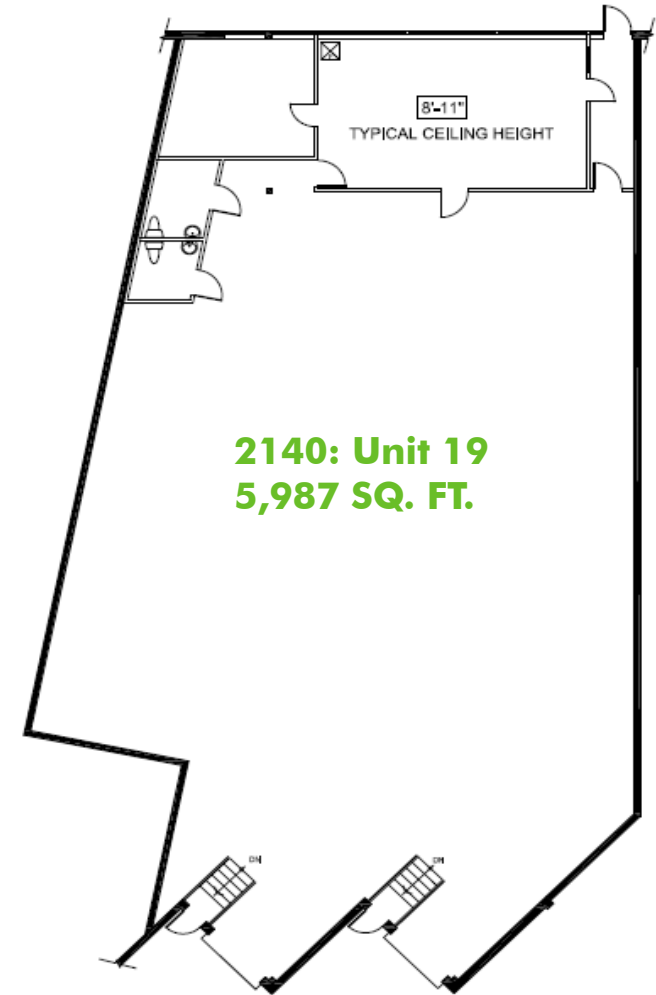


FLOOR PLANS: 2140& 2150 WINSTON PARK

**50: Unit 7-9
8,342 SQ. FT.**



**2140: Unit 19
5,987 SQ. FT.**



***Not Exactly as built**

www.cbre.ca

dream  **CBRE**