

# FOR LEASE

922 - 1,713 Sq. Ft. (+/-)

# LIZOTTE

AND ASSOCIATES REAL ESTATE INC



9912 - 106 Street, Edmonton, AB

## CENTRAL OFFICE SPACE

### Property Highlights

- Economical office space
- Walking distance to Downtown financial core
- Within 3 blocks of 2 LRT stations
- Quick access to exit Downtown core
- Wheelchair accessible



780.488.0888



[www.lizotterealestate.com](http://www.lizotterealestate.com)



#1200, 10117 Jasper Avenue  
Edmonton, AB T5J 1W8



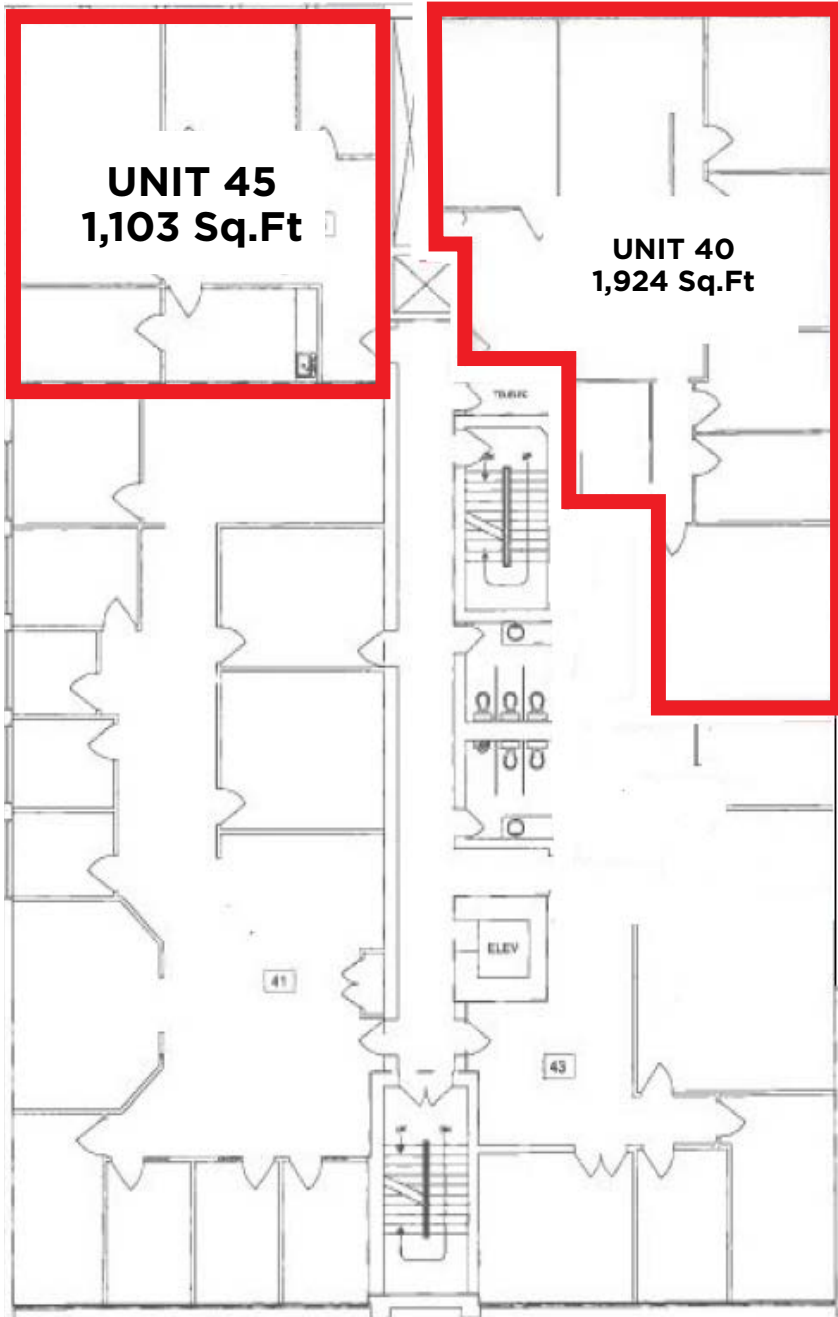
No warranty or representation, expressed or implied, is made as to the accuracy of the information contained herein, and same is submitted subject to errors, omissions, change of price, rental or other conditions, withdrawal without notice, and to any specific listing condition, imposed by our principals.

# FOR LEASE

## CENTRAL OFFICE SPACE

**LIZOTTE**  
AND ASSOCIATES REAL ESTATE INC

### 4th floor



780.488.0888



[www.lizotterealestate.com](http://www.lizotterealestate.com)



#1200, 10117 Jasper Avenue  
Edmonton, AB T5J 1W8

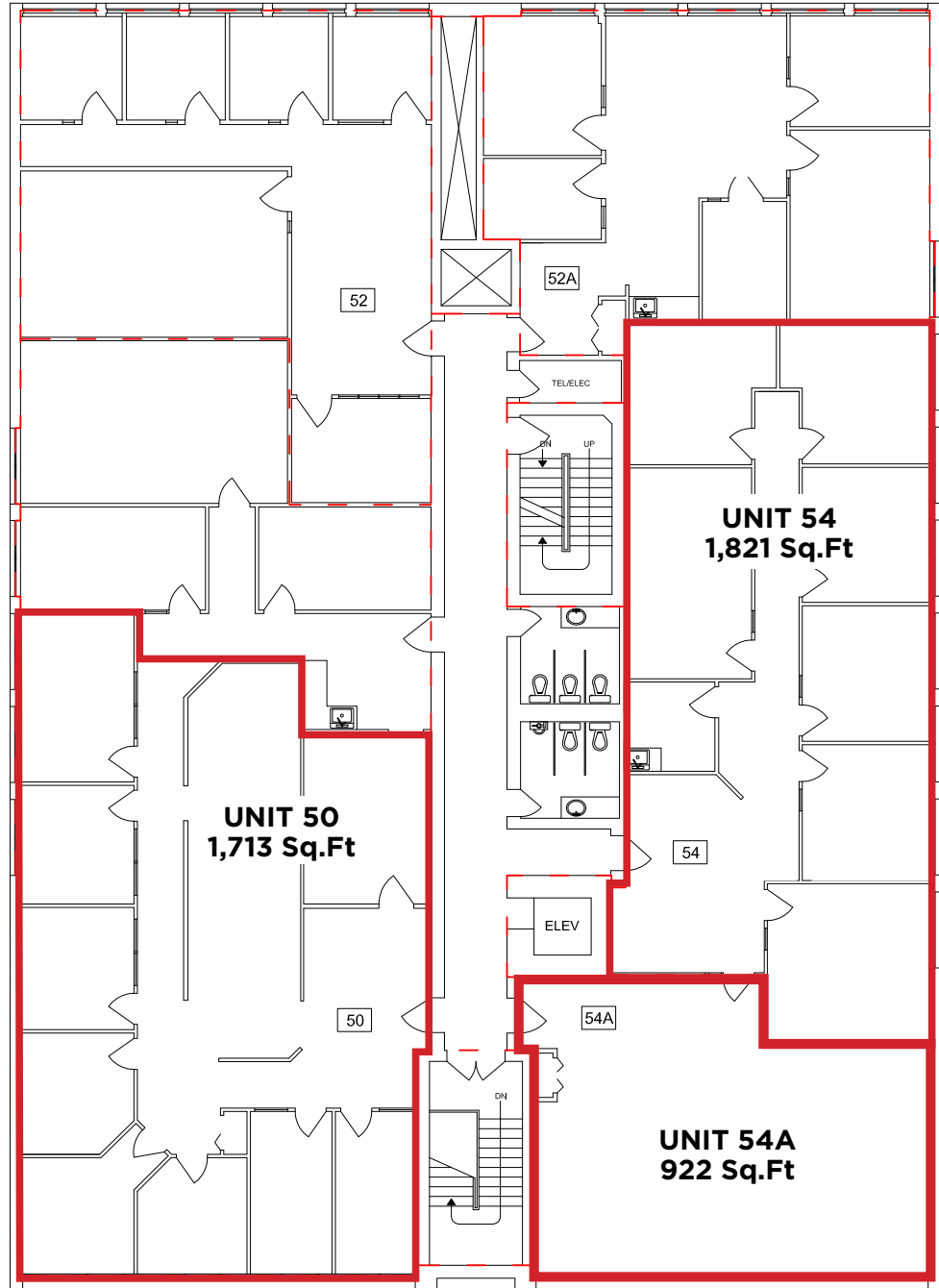
No warranty or representation, expressed or implied, is made as to the accuracy of the information contained herein, and same is submitted subject to errors, omissions, change of price, rental or other conditions, withdrawal without notice, and to any specific listing condition, imposed by our principals.

# FOR LEASE

CENTRAL OFFICE SPACE

**LIZOTTE**  
AND ASSOCIATES REAL ESTATE INC

## 5th floor



**Unit 50**



# FOR LEASE

## CENTRAL OFFICE SPACE

**LIZOTTE**  
AND ASSOCIATES REAL ESTATE INC

### Property Information

**Municipal Address:** 9912 - 106 Street, Edmonton, AB

**Size:** **Unit 40** 1,924 SF (+/-)  
**Unit 45** 1,103 SF (+/-)  
**Unit 50** 1,651 SF (+/-)  
**Unit 54** 1,821 SF (+/-)  
**Unit 54A** 922 SF (+/-)

**Zoning:** RMU (Residential Mixed Use Zone)

**Parking:** Impark at monthly cost

**Possession:** Immediate

\$\$\$

**Lease Rate:** \$10.00/Sq. Ft.

**Op Costs:** \$11.25/Sq. Ft.

 **YouTube**  Entrance/Common Area Suite #50

### Contact

**Chuck Clubine**  
Senior Associate  
Cell: 780.264.7773  
Direct: 780.784.6553  
chuck@lizotterealestate.com

**Tom Dean**  
Associate  
Cell: 780.920.8019  
Direct: 780.784.6550  
tom@lizotterealestate.com

