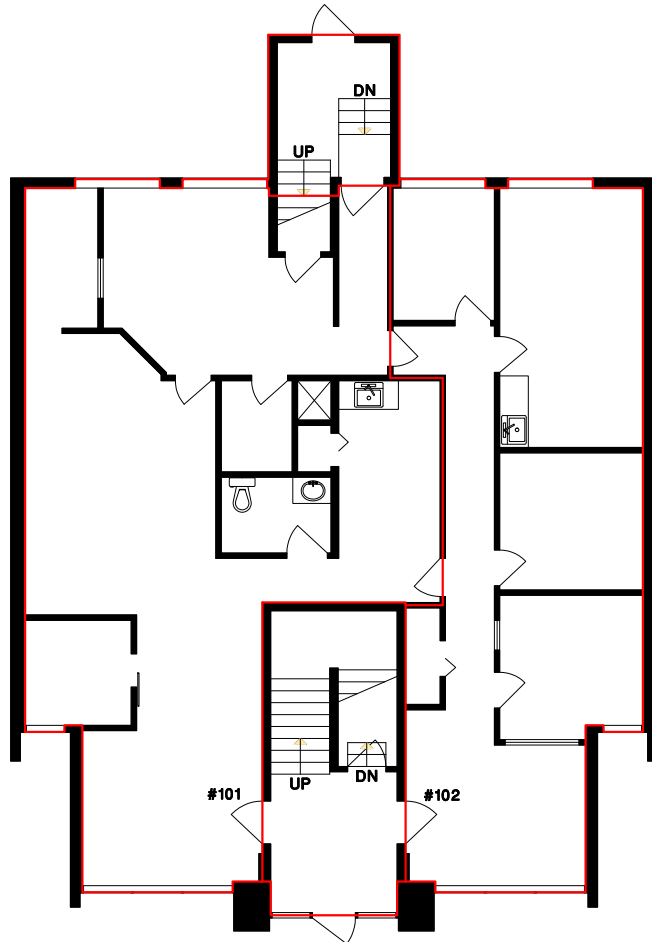
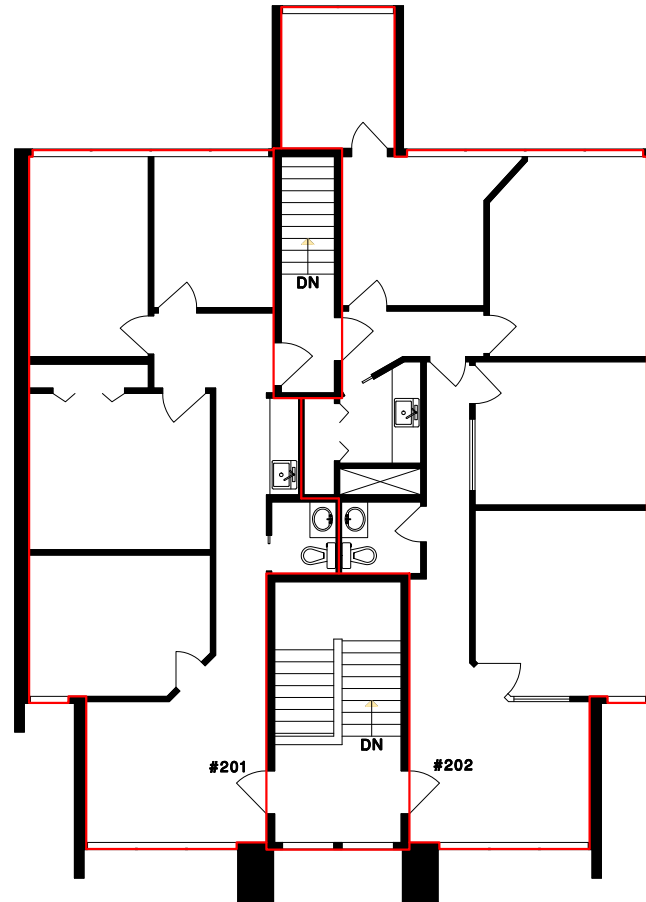


2469 PAULINE STREET,
ABBOTSFORD, B.C.



MAIN FLOOR
INTERIOR GROSS AREA
2,156 SQ.FT.



SECOND FLOOR
INTERIOR GROSS AREA
2,103 SQ.FT.

AREA CERTIFICATION: AUGUST 16, 2024

As evidenced by our signature and in accordance with the
ANSI/BOMA Z65.1-2010 Office Buildings: Standard Methods of Measurement,
we hereby certify the Rentable Area of this BUILDING to be 3,666 Square Feet.


CRAIG W. NICHOLS
MEASURE MASTERS



1" = 6'
SCALE

DRAWN BY: CN
DATE: AUGUST 2024
REVISED:

 **MEASURE MASTERS**
SURREY/WHITE ROCK
(604) 539-0285
surrey@measuremasters.ca