

FOR LEASE AT THE  
UNIVERSITY OF BRITISH COLUMBIA



# 2601 EAST MALL

VANCOUVER, BC

Mid-century modern **office** opportunity

## ALAIN RIVÈRE

Personal Real Estate Corporation  
Senior Vice President  
CBRE Limited, The HTFG  
alain.rivere@cbre.com | +1 604 662 5110



THE HIGH  
TECHNOLOGY  
FACILITIES GROUP

**CBRE**



# BUILDING DETAILS

## OFFICE SPACE



Kitchen/Lunchroom

### USE

Office

### PREMISES

5,000 SF - 14,500 SF  
Across 2nd (shared), 3rd, and  
partial basement

### GROSS RENT

\$42.00 PSF  
(Utilities and Janitorial services  
additional)

### AVAILABILITY

Move-in ready with  
furniture available



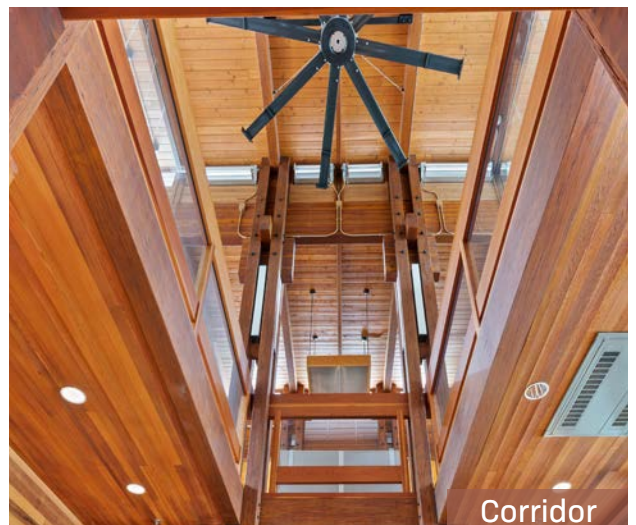
Private Offices



Kitchen/Lunchroom



Patio



Corridor



# BUILDING FEATURES

## OFFICE SPACE



Full building with branding opportunity.



Mid-century modern design with beautiful exposed beams and wood features.



Large windows allowing an abundant of natural light.



Large kitchen and lounge area, with private patio surrounded by nature.



New washrooms and showers on lower level.



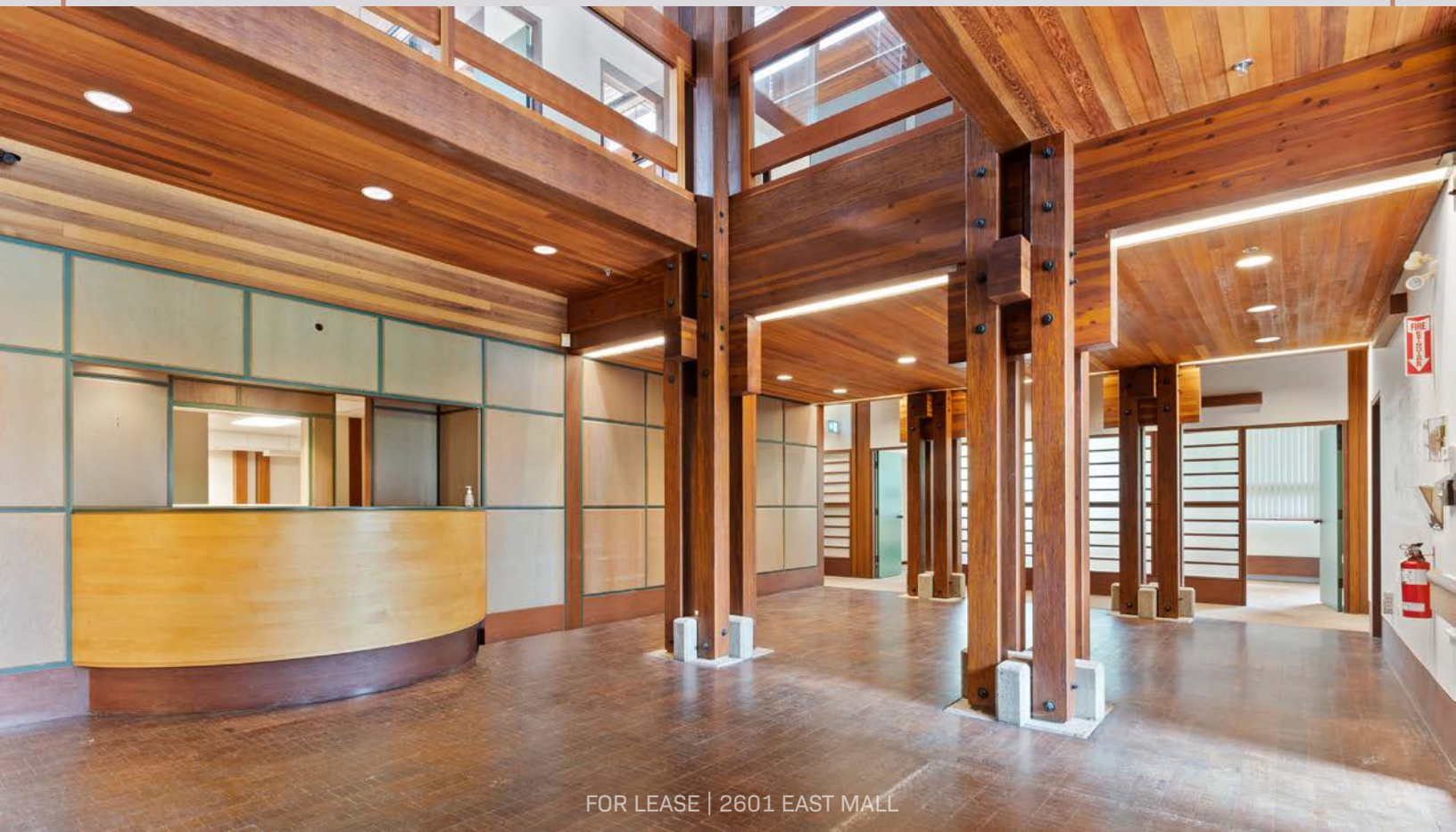
Multiple offices, meeting rooms, boardroom, open workspace, and storage areas.



Direct exterior loading access plus large parking lot available free of charge.



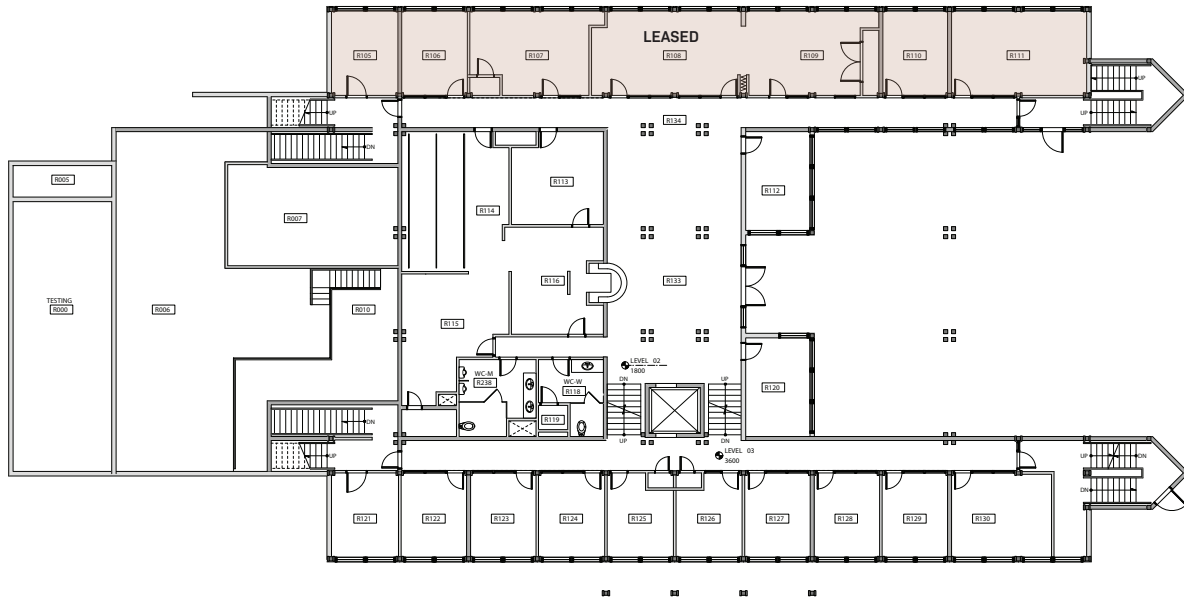
Ready for immediate occupancy, or renovation, as required.



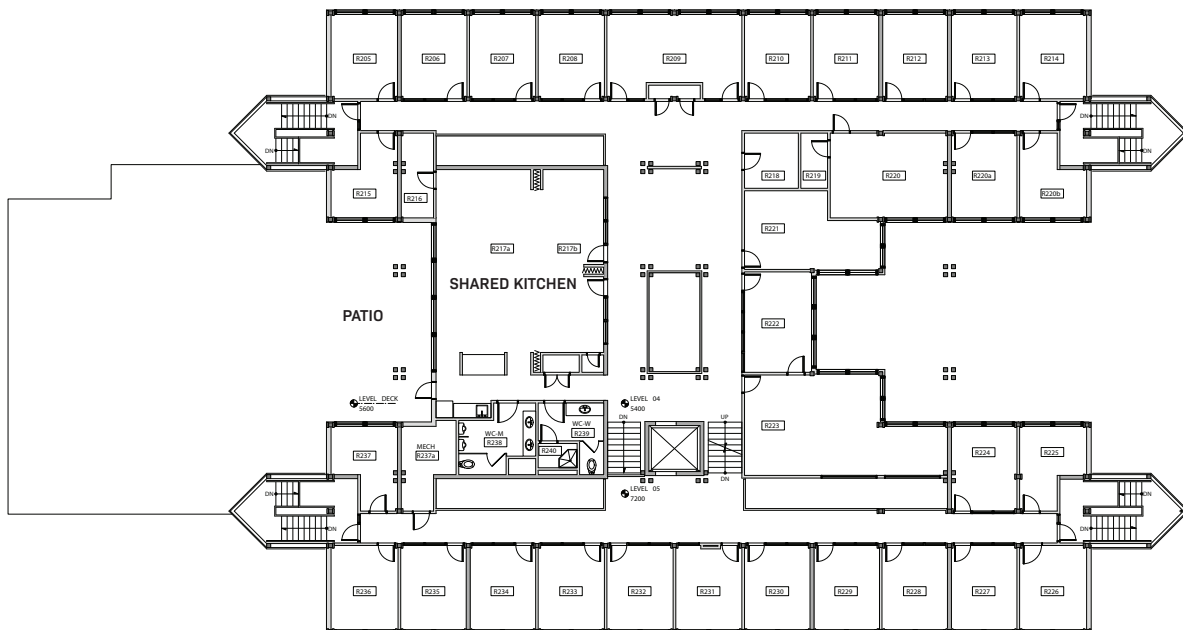
# FLOOR PLANS\*

## OFFICE SPACE

### SECOND LEVEL



### THIRD LEVEL

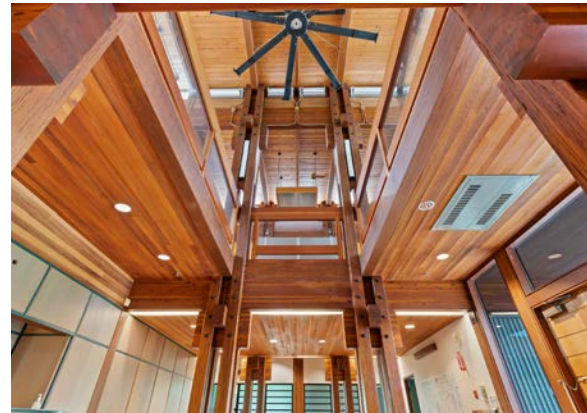


\*Plans are approximate and not to scale.



# 2601 EAST MALL

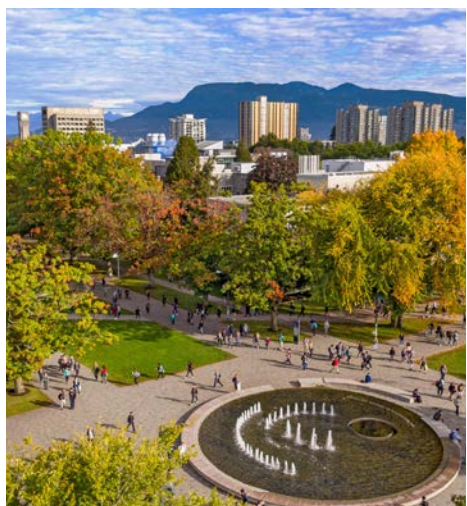
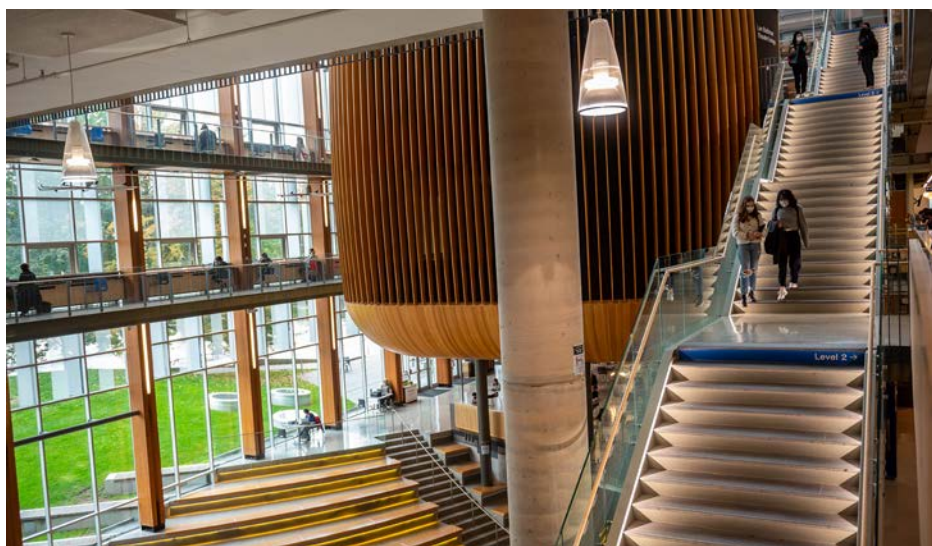
## GALLERY





# THE LOCATION

2601 East Mall is located on the incomparable University of British Columbia (UBC) Point Grey campus. This acclaimed university environment is a complete, progressive community, with a full complement of food, retail, and services. It boasts some of the region's finest cultural venues, and amenity options including the colourful UBC Botanical Gardens, lush rainforest trails, iconic West Coast beaches, and a full range of varsity-calibre athletic facilities – all within walking distance.





# THE NEIGHBOURHOOD



## ATTRACTIONS

- 01 Museum of Anthropology
- 02 Chan Centre for the Performing Arts
- 03 UBC Botanical Garden
- 04 Beaty Biodiversity Museum
- 05 Morris and Helen Belkin Art Gallery
- 06 Frederic Wood Theatre
- 07 AHVA Gallery
- 08 Pacific Museum of Earth
- 09 Nitobe Memorial Garden
- 10 UBC Rose Garden

## AMENITIES

- 11 Wesbrook Community Centre
- 12 Old Barn Community Centre
- 13 MacInnes Field
- 14 War Memorial Gymnasium
- 15 UBC Aquatic Centre
- 16 Doug Mitchell Thunderbird Sports Centre
- 17 Thunderbird Park
- 18 UBC Tennis Centre

## RESTAURANTS

- 19 Jamjar Canteen
- 20 JJ Bean Coffee Roasters
- 21 Body Energy Club
- 22 BierCraft Restaurant
- 23 Neptune Chinese Kitchen
- 24 Great Dane Coffee
- 25 Bean Around the World Coffee House & Bistro
- 26 Virtuous Pie
- 27 Tacomio
- 28 Uncle Fatih's Pizza

## SERVICES

- 29 Save-On-Foods
- 30 House of Vision Optical
- 31 Scotiabank
- 32 Shoppers Drug Mart
- 33 Focal Dental
- 34 Telus/Koodo
- 35 Mozart School of Music Vancouver
- 36 Copy Smart
- 37 Royal Bank
- 38 Wesbrook Properties
- 39 BC Liquor Store
- 40 Insure BC
- 41 Wesbrook Village Dental Clinic
- 42 Live at UBC Welcome Centre
- 43 More Bikes

## NATURE

- 44 Wreck Beach
- 45 Pacific Spirit Regional Park



# FOR MORE INFORMATION & TOUR REQUEST CONTACT

**ALAIN RIVÈRE**

Personal Real Estate Corporation  
Senior Vice President  
CBRE Limited, The HTFG  
alain.rivere@cbre.com | +1 604 662 5110

HT  
FG

THE HIGH  
TECHNOLOGY  
FACILITIES GROUP

**CBRE**



**FOR LEASE | 2601 EAST MALL**

This disclaimer shall apply to CBRE Limited, Real Estate Brokerage, and to all other divisions of the Corporation; to include all employees and independent contractors ("CBRE"). The information set out herein, including, without limitation, any projections, images, opinions, assumptions and estimates obtained from third parties (the "Information") has not been verified by CBRE, and CBRE does not represent, warrant or guarantee the accuracy, correctness and completeness of the Information. CBRE does not accept or assume any responsibility or liability, direct or consequential, for the Information or the recipient's reliance upon the Information. The recipient of the Information should take such steps as the recipient may deem necessary to verify the Information prior to placing any reliance upon the Information. The Information may change and any property described in the Information may be withdrawn from the market at any time without notice or obligation to the recipient from CBRE. CBRE and the CBRE logo are the service marks of CBRE Limited and/or its affiliated or related companies in other countries. All other marks displayed on this document are the property of their respective owners. All Rights Reserved. Mapping Sources: Canadian Mapping Services [canadamapping@cbre.com](mailto:canadamapping@cbre.com); DMTI Spatial, EnviroNics Analytics, Microsoft Bing, Google Earth.