

SPACE FOR LEASE

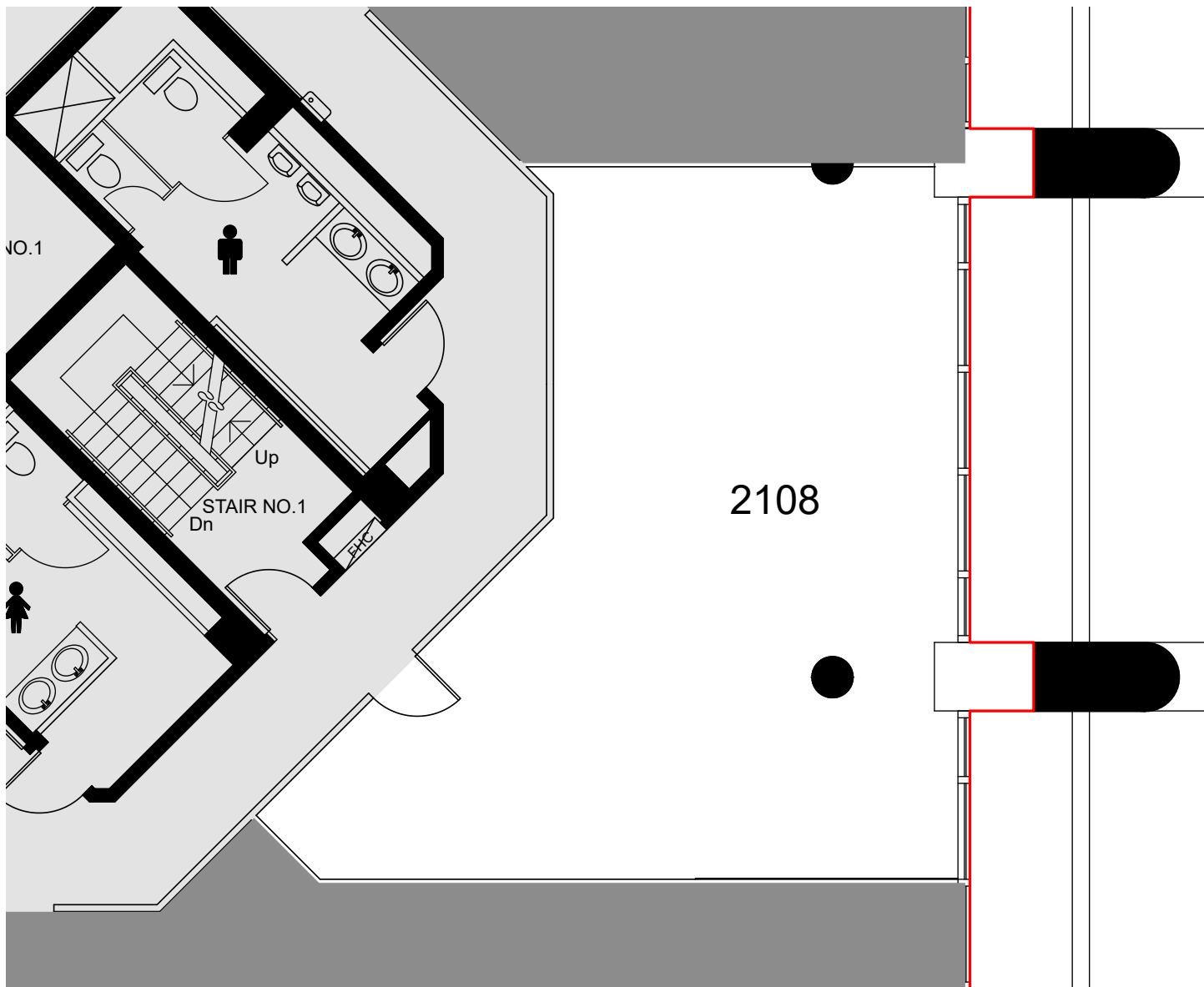
Purdy's Wharf Tower II Suite 2108

1969 Upper Water Street
Halifax Canada B3J 3R7

CONTACT INFORMATION

GWL Realty Advisors Inc
(902) 421-1122 | pwoneserve@gwla.com

Availability: Now



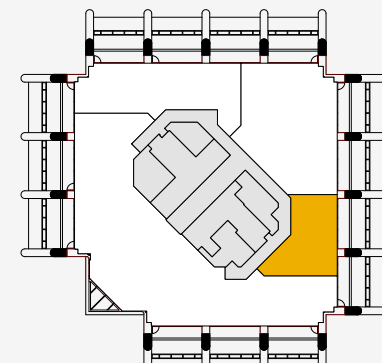
SUITE VIEW

INFORMATION

SUITE: 21st floor, Suite 2108

RENTABLE AREA: 1,029 sq.ft.

Purdy's Wharf Tower Two is a 22-storey Class "AAA" office building that is the prominent business address in Halifax. It is attractively located on the Waterfront and is connected to the Pedway system in Halifax's Central Business District. The building features a striking coloured glass and concrete exterior and the complex dominates the Halifax skyline.



KEY PLAN