

New Retail For Lease



Frontier Centre

North Battleford, SK



High profile pad opportunities at Frontier Centre

MIKE HODGE*

Partner

604.282.3063

mike.hodge@tetrarealty.ca

*Personal Real Estate Corporation

Opportunity

Tetra Realty Advisors is pleased to present a premier leasing opportunity at Frontier Centre in North Battleford, Saskatchewan. Strategically positioned on an outparcel at Frontier Centre, the proposed 6,350 sf pad building will be located at the heart of North Battleford’s dominant retail hub, benefiting from proximity to Walmart, No Frills, Canadian Tire, Dollarama as well as multiple restaurants, hotels and recreation destinations. The proposed pad opportunity will benefit from strong exposure and access to Carlton Trail providing convenience for commuters, travelers, and shoppers.

Frontier Centre serves as a the retail heart of North Battleford, attracting a diverse flow of every day needs and retail destination traffic. North Battleford’s consistent economic growth and population growth has allowed Frontier Centre to offer shopping, eating and entertainment options for everyone living, working and travelling in North Battleford.

Property Details

LEASABLE AREA

CRU 1: 1,280 sf
CRU 2: 1,235 sf
CRU 3: 1,302 sf
Size options ranging from:
1,200 sf - 3,827 sf

BASIC RENT

Contact listing agents

ADDITIONAL RENT

Contact listing agents

TIMING

Estimated Q4 2026

ZONING

Regional Commercial District - C4

Demographics



13,817
Population
(People living in the area)



15,881
Daytime
Population



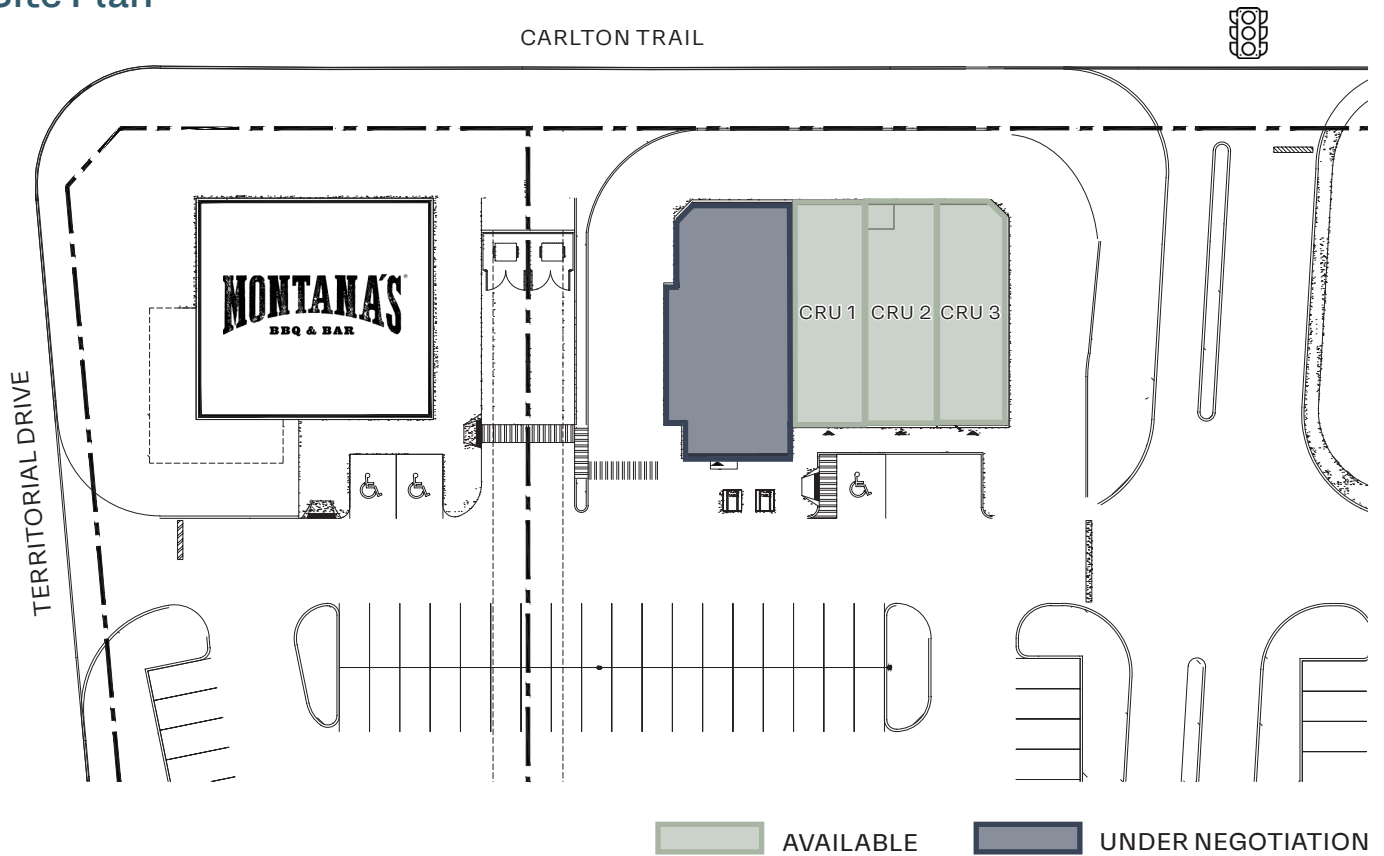
6,335
Households

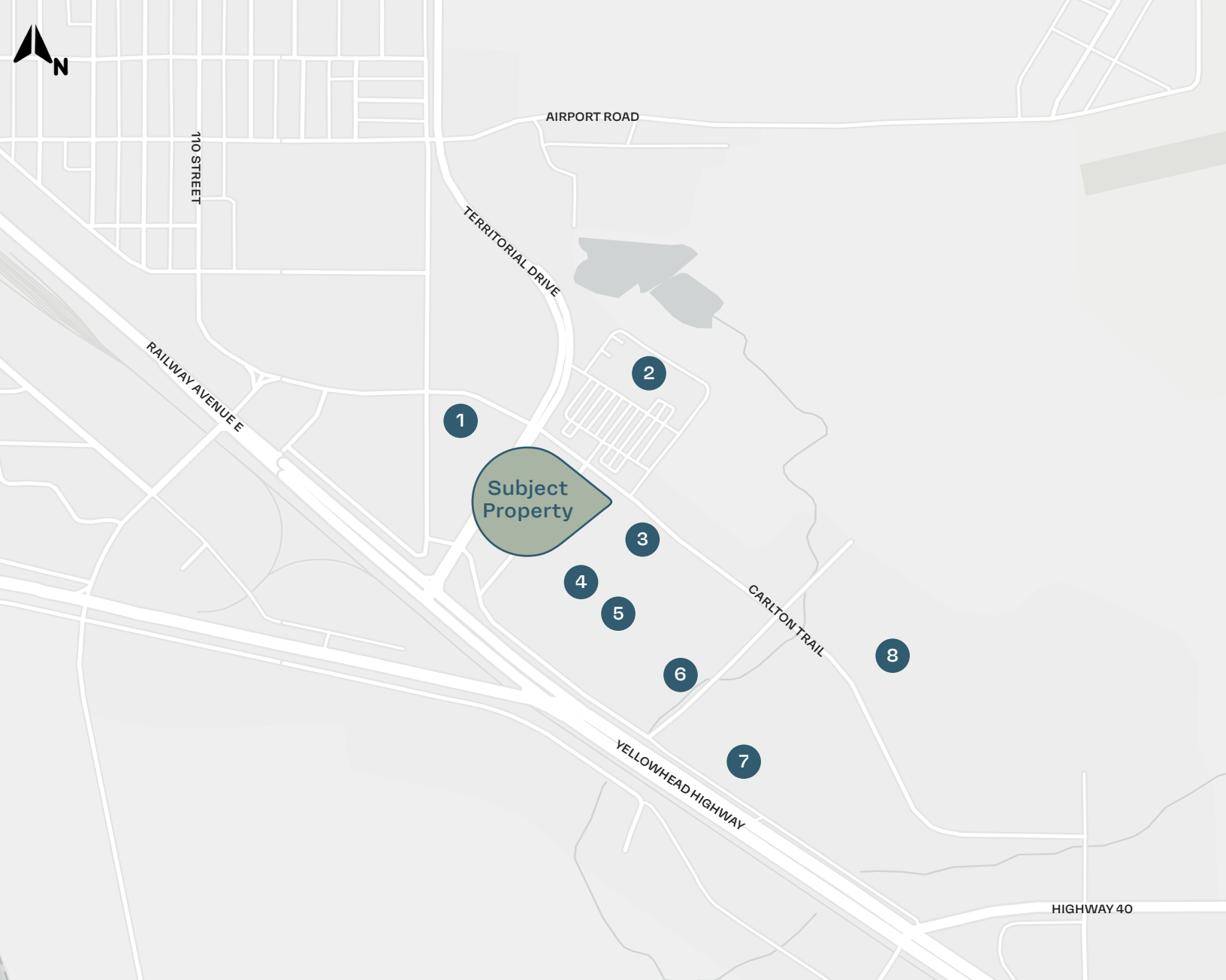


\$86,966
Household
Income

*Within 5km of Subject Property (2023)
**Source: PlinPoint

Site Plan





- | | |
|----------------------------------|--|
| 1 Holiday Inn Express and Suites | 5 Frontier Centre (enclosed mall) |
| 2 Walmart Supercentre | 6 Canadian Tire |
| 3 Comfort Inn & Suites | 7 Gold Eagle Casino & Lodge |
| 4 No Frills | 8 CUPlex (4 component multipurpose facility) |

Contact us for more information

MIKE HODGE*

Partner

604.282.3063

mike.hodge@tetraREALTY.ca

*Personal Real Estate Corporation



© 2025 Tetra Realty Advisors. The information contained herein was obtained from sources that we deem reliable and, while thought to be correct, is not guaranteed by Tetra Realty Advisors. All rights reserved. E. & O.E.