

Retail Space

# 99 Kakulu Road

OTTAWA, ONTARIO



**QUBE PROPERTIES LTD.**  
REAL ESTATE BROKERAGE  
255 MICHAEL COWPLAND DRIVE  
OTTAWA ON K2M 0M5

**QUBE**

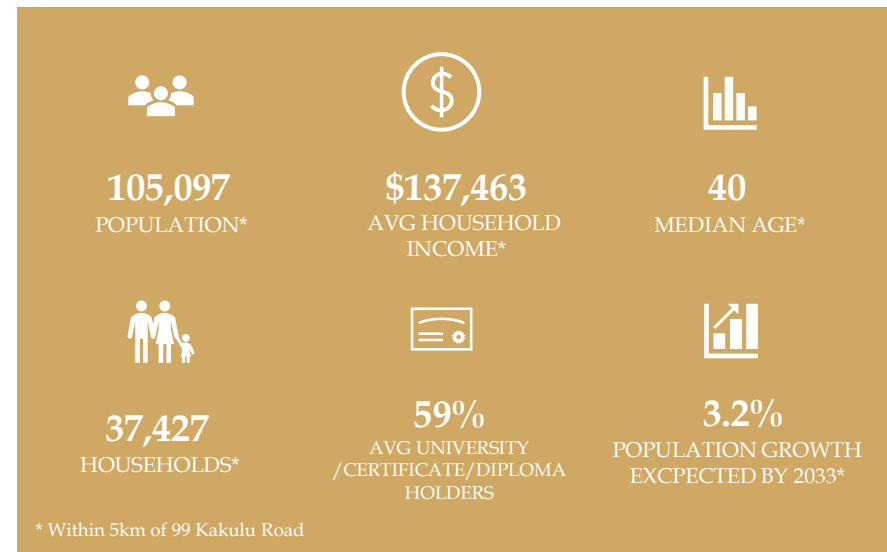
# 99 Kakulu Road- Retail

## LEASE DETAILS

Premises	Type	Size (SF)	Availability	Base Rent	Additional Rent
Unit 105	Retail/Office	3,425	January 1, 2026	Please Contact	\$19.14 (est. 2025)

## HIGHLIGHTS

- The Kanata Medical Arts Building is a 2-storey medical building located in Kanata South. The building services over **80,000 residents** in its immediate surrounding neighbourhoods.
- The building is located off the Highway 417 on/off ramp at Castlefrank Road. There is **on-site parking** and direct access to public transit stations.
- Located adjacent to established neighbourhoods with captive residential audience in Kanata, Hazeldean, Glen Cairn and Beaverbrook.
- Opportunity for **Amenity** or **Daycare** use with play area in the rear of the building.
- **Utilities** and **in-suite cleaning** included in Additional Rent



**BEN SHERMAN**  
BROKER  
(613) 513 4759  
[ben@qubeproperties.com](mailto:ben@qubeproperties.com)

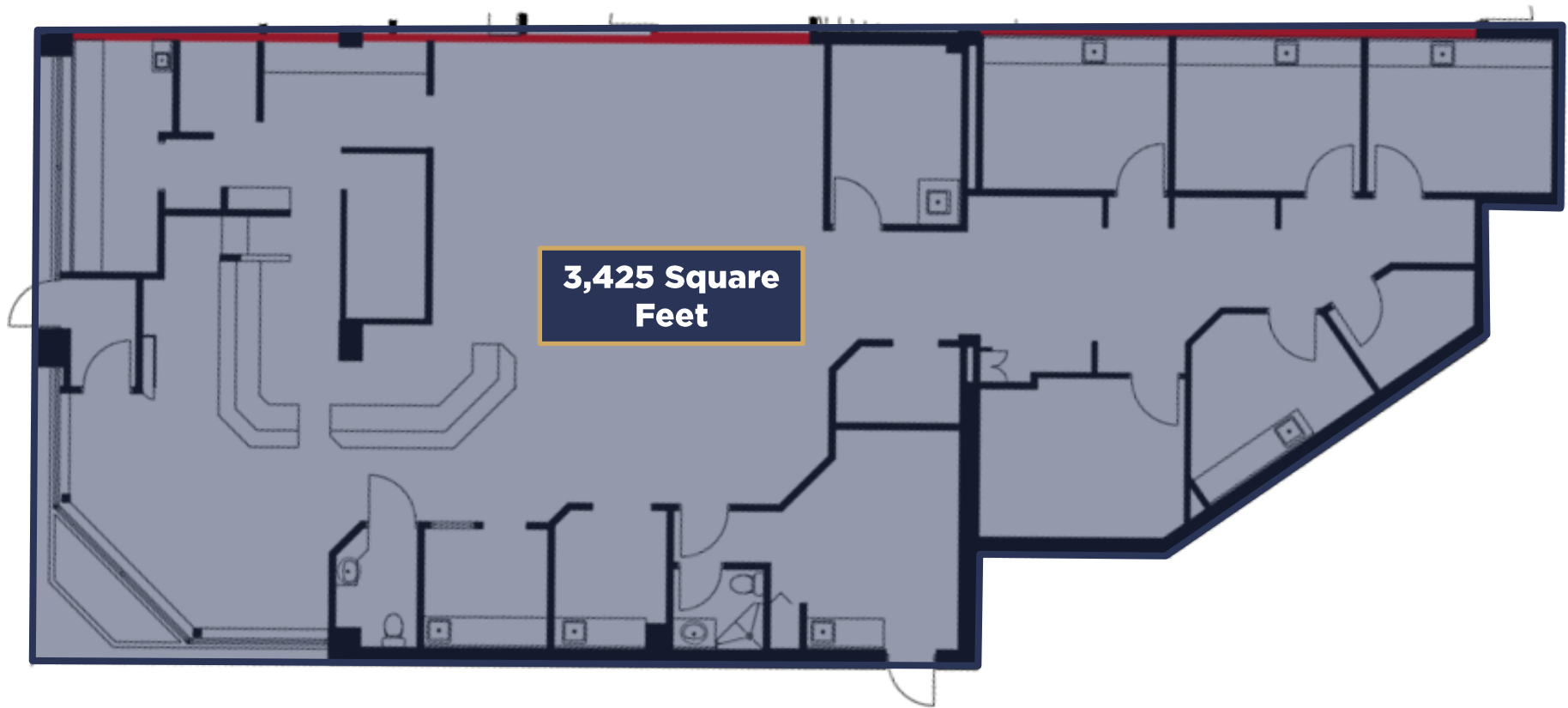
**SAMIZ SUNESARA**  
SALES REPRESENTATIVE  
(613) 413 2178  
[samiz@qubeproperties.com](mailto:samiz@qubeproperties.com)

**QUBE PROPERTIES LTD.**  
REAL ESTATE BROKERAGE  
255 MICHAEL COWPLAND DRIVE  
OTTAWA ON K2M 0M5

**QU  
BE**

# 99 Kakulu Road- Retail

## FLOOR PLAN



**BEN SHERMAN**  
BROKER

(613) 513 4759

[ben@qubeproperties.com](mailto:ben@qubeproperties.com)

**SAMIZ SUNESARA**  
SALES REPRESENTATIVE

(613) 413 2178

[samiz@qubeproperties.com](mailto:samiz@qubeproperties.com)

**QUBE PROPERTIES LTD.**  
REAL ESTATE BROKERAGE  
255 MICHAEL COWPLAND DRIVE  
OTTAWA ON K2M 0M5







# QUBE

**BEN SHERMAN**

BROKER

(613) 513 4759

[ben@qubeproperties.com](mailto:ben@qubeproperties.com)

**SAMIZ SUNESARA**

SALES REPRESENTATIVE

(613) 413 2178

[samiz@qubeproperties.com](mailto:samiz@qubeproperties.com)

This disclaimer shall apply to Qube Properties Ltd, Real Estate Brokerage, and to all other divisions of the Corporation; to include all employees and independent contractors ("Qube"). The information set out herein, including, without limitation, any projections, images, opinions, assumptions and estimates obtained from third parties (the "Information") has not been verified by Qube, and Qube does not represent, warrant or guarantee the accuracy, correctness and completeness of the Information. Qube does not accept or assume any responsibility or liability, direct or consequential, for the Information or the recipient's reliance upon the Information. The recipient of the Information should take such steps as the recipient may deem necessary to verify the Information prior to placing any reliance upon the Information.

# QUBE PROPERTIES

**QUBE PROPERTIES LTD.**

REAL ESTATE BROKERAGE  
255 MICHAEL COWPLAND DRIVE  
OTTAWA ON K2M 0M5