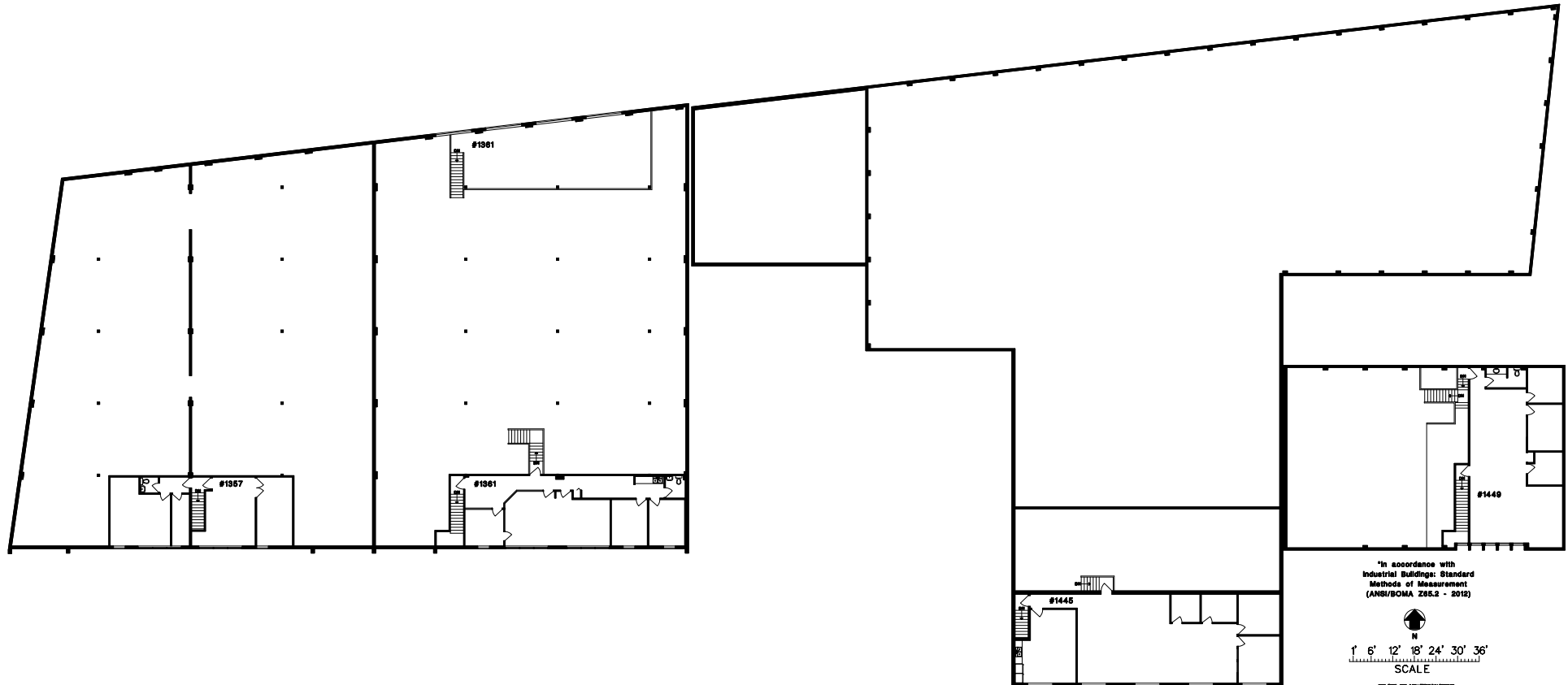
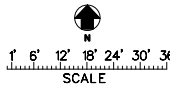


1357-1361 POWELL ST.,
1435-1449 POWELL ST.,
VANCOUVER, B.C.

2nd FLOOR



In accordance with
Industrial Buildings: Standard
Methods of Measurement
(ANSI/BOMA Z85.2 - 2012)



MILLER ENGINEERING
VANCOUVER, B.C.
2024-05-08