

1 SPECTACLE LAKE DRIVE

DARTMOUTH, NOVA SCOTIA

FOR LEASE
+/- 20,000 SF AVAILABLE

**MODERN PROFESSIONAL
OFFICE SPACE**





PROPERTY OVERVIEW

LEASE RATE: PLEASE CONTACT

1 Spectacle Lake Drive offers approximately 19,987 square feet of existing office space within Dartmouth's established commercial corridor. Positioned near Burnside Business Park with convenient access to Highway 118 and the Halifax Harbour bridges, the property provides efficient regional connectivity for staff and visitors alike.

The existing office fit-up supports a range of professional and administrative users through a mix of open workspace, meeting areas, private offices, and collaborative environments.

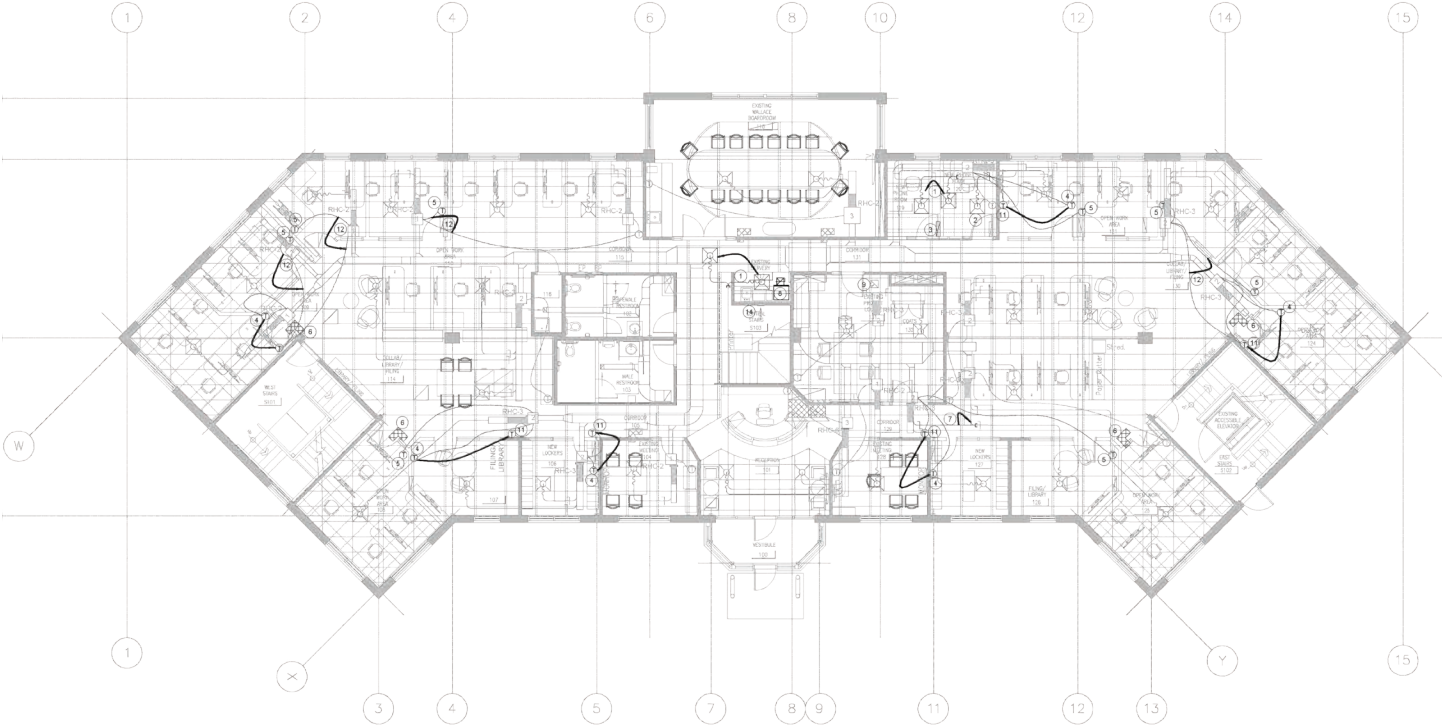
HIGHLIGHTS



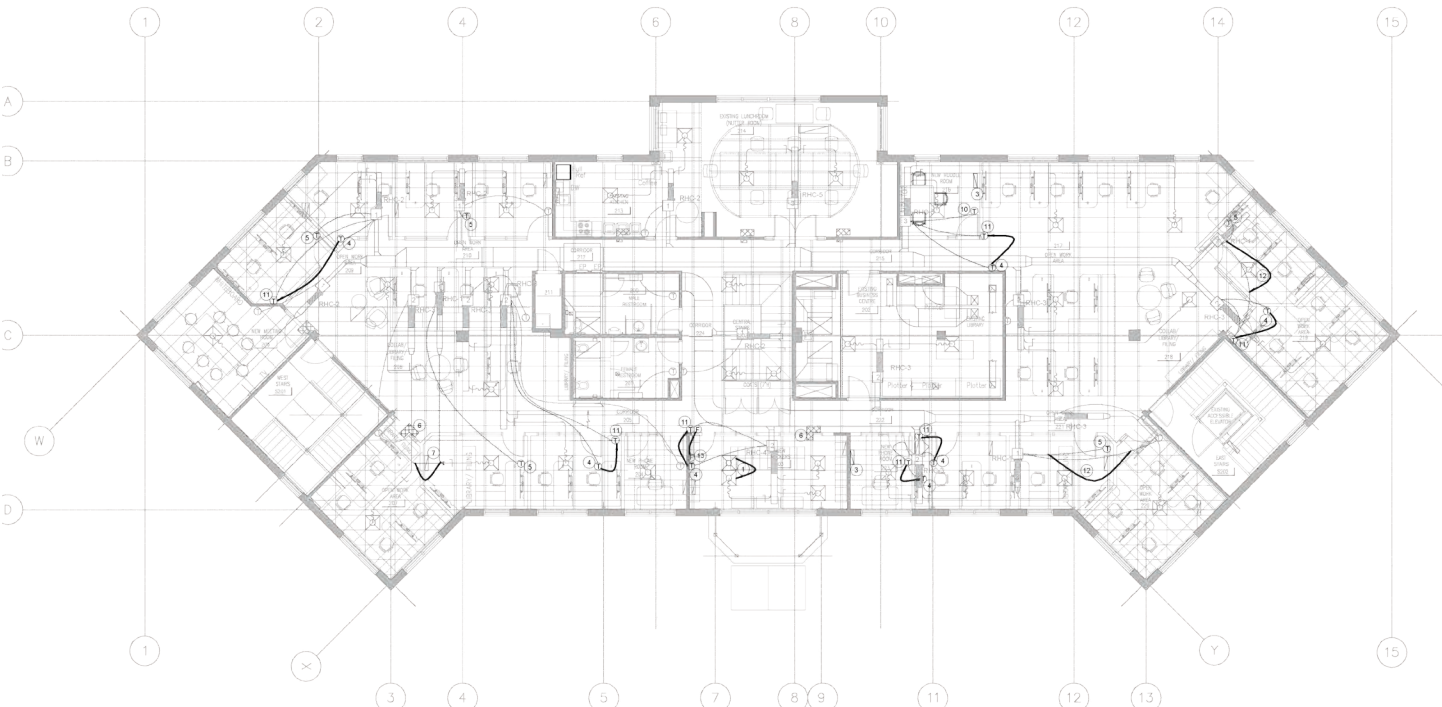
- **Existing Office Fit-Up:** Includes open workspace, private offices, meeting rooms, and collaborative areas already in place.
- **Flexible Office Opportunity:** Approximately 19,987 SF suited for a range of professional and administrative users.
- **Nearby Employee Amenities:** Surrounded by retail, food service, and everyday commercial amenities.
- **Connected Dartmouth Location:** Convenient access to Burnside Business Park, Highway 118, and the Halifax Harbour bridges.
- **Established Commercial Setting:** Located within a well-established Dartmouth business corridor.
- **Ample On-Site Parking:** Surface parking available for employees and visitors on-site.

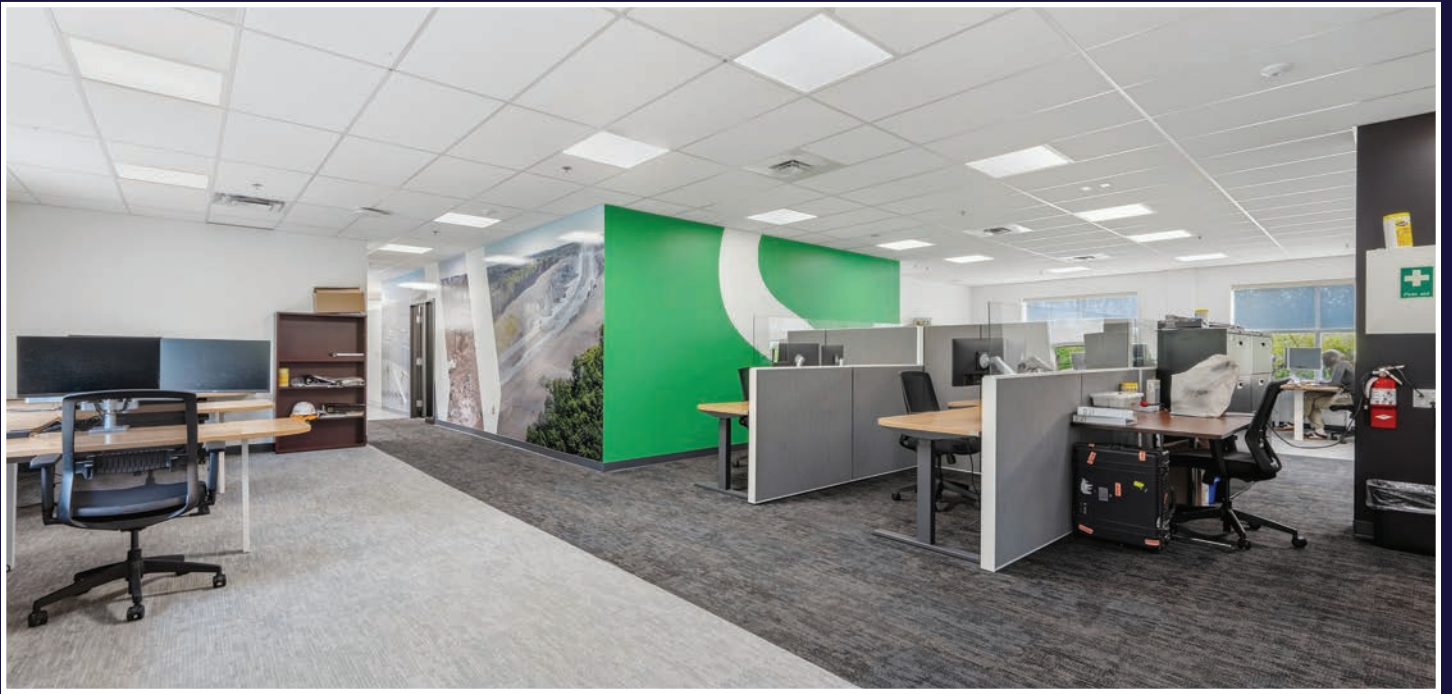
FLOOR PLANS

MAIN FLOOR



SECOND FLOOR

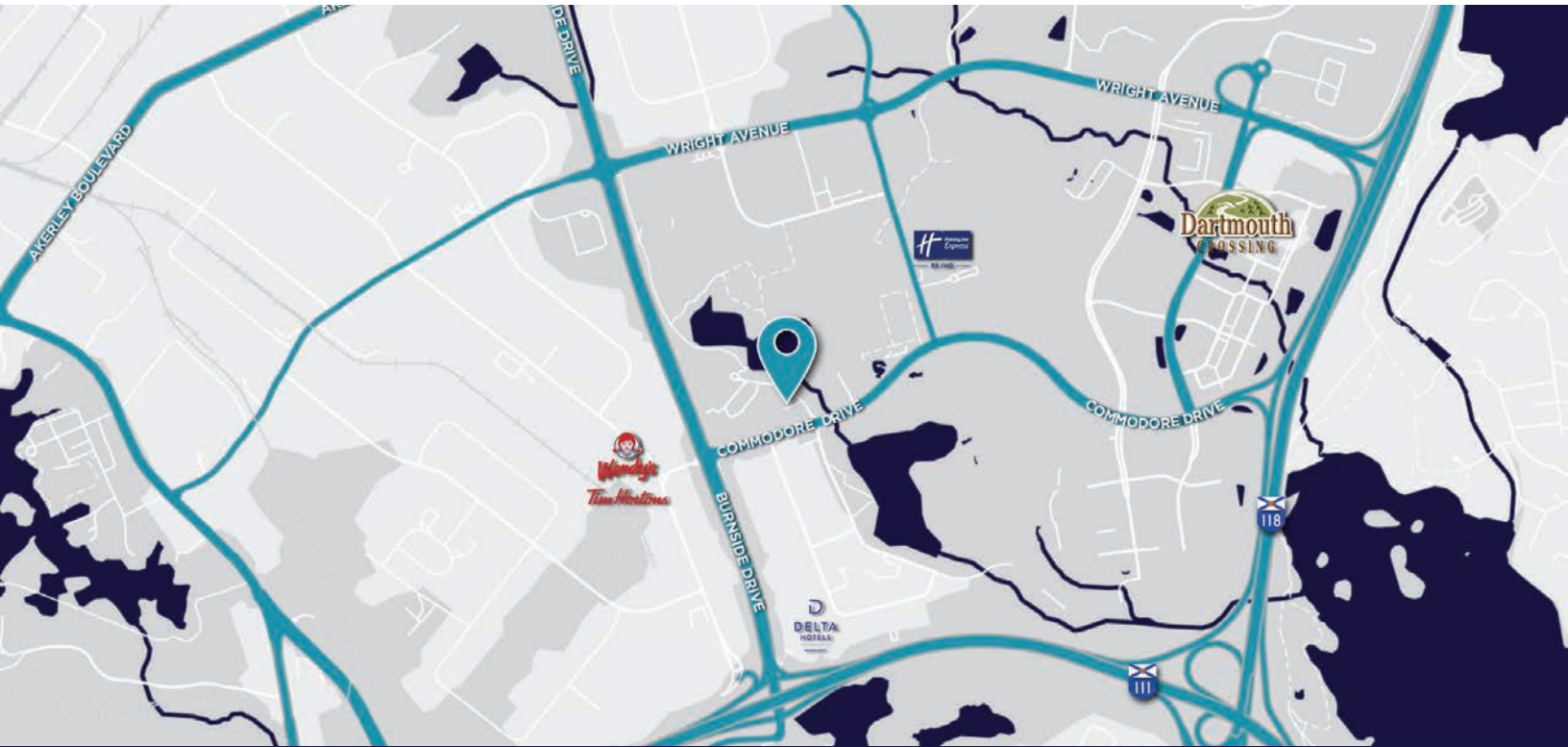




LOCATION OVERVIEW

1 Spectacle Lake Drive is located within Dartmouth's City of Lakes Business Park, offering convenient access to Burnside Business Park, Highway 118, and the Halifax Harbour bridges. The property is well-positioned for businesses requiring connectivity throughout Dartmouth, Halifax, and surrounding communities.

The surrounding area also benefits from nearby retail, food service, hotel, and commercial amenities, supporting day-to-day convenience for both employees and visitors.



ABOUT THE CITY OF LAKES BUSINESS PARK

City of Lakes Business Park is an established Dartmouth business park located between the Burnside Business Park and Dartmouth Crossing, offering convenient access throughout HRM via Highways 111 and 118.

The area is home to a mix of office, commercial, and service-based businesses, supported by nearby restaurants, hotels, retail, fitness facilities, and other everyday amenities. Combined with Burnside Business Park, the broader district supports more than 2,000 businesses and approximately 30,000 employees, reinforcing its position as one of Atlantic Canada's major commercial hubs.

Its accessibility, established business environment, and surrounding amenities continue to make City of Lakes Business Park a practical and well-connected location for a range of office users.

**MINUTES FROM
BURNSIDE BUSINESS
PARK**

**DIRECT ACCESS TO
HIGHWAY 118**

**CONNECTIVITY TO
BOTH BRIDGES**

**DARTMOUTH
CROSSING NEARBY**



For more information, please contact:

Bill MacAvoy
Executive Vice Chairman
+1 902 880 0445
bmacavoy@cwatlantic.com

Alec Cranston
Senior Associate
+1 902 789 2477
acranston@cwatlantic.com

170 Cromarty Drive, Suite 205
Dartmouth, NS B3B 0G1
Direct +1 902 425 1444
cwatlantic.com

©2026 Cushman & Wakefield Atlantic. All rights reserved. The information contained in this communication is strictly confidential. This information has been obtained from sources believed to be reliable but has not been verified. NO WARRANTY OR REPRESENTATION, EXPRESS OR IMPLIED, IS MADE AS TO THE CONDITION OF THE PROPERTY (OR PROPERTIES) REFERENCED HEREIN OR AS TO THE ACCURACY OR COMPLETENESS OF THE INFORMATION CONTAINED HEREIN, AND SAME IS SUBMITTED SUBJECT TO ERRORS, OMISSIONS, CHANGE OF PRICE, RENTAL OR OTHER CONDITIONS, WITHDRAWAL WITHOUT NOTICE, AND TO ANY SPECIAL LISTING CONDITIONS IMPOSED BY THE PROPERTY OWNER(S). ANY PROJECTIONS, OPINIONS OR ESTIMATES ARE SUBJECT TO UNCERTAINTY AND DO NOT SIGNIFY CURRENT OR FUTURE PROPERTY PERFORMANCE.