

# FOR SALE | 128.11 Acres of Industrial Land

**HCR** HUGHES  
COMMERCIAL  
REALTY GROUP



SALE PRICE:  
**\$7,600,000**  
(\$59,342 PER ACRE)



± 128.11 Acres  
Available Immediately

Univar Solutions

BUNGE

Nutrien  
Solutions

RR 225 SERVICE ROAD  
HIGHWAY 825

N

**Prime Industrial Land:** Full municipal services with flexible zoning, located in Canada's largest hydrocarbon and petrochemical hub with \$50B+ in ongoing capital investment.

**Highway Accessibility:** Prime frontage along Highway 825 with turning lanes, service road frontage providing multiple access points, and direct access to Alberta's High Load Corridor to Fort McMurray.

**Data Centre Potential:** Adjacent to a 240 kV double-circuit line and 3.2 km from Lamoureux Substation. AltaLink's Pre-SASR indicates feasible connection options with scalability from 250 MW to 350-550 MW, with capacity determined by AESO allocation process. The property has the scale and zoning to support on-site generation (natural gas, hydrogen, or renewables), enabling reliable interim power until [AESO Phase 2 grid allocations](#). ⓘ

**Subdivision Potential:** The property can be subdivided into multiple lot sizes, with dedicated access to each lot (see concept plan below).

# FOR SALE | 128.11 ACRES OF INDUSTRIAL LAND



## MUNICIPAL ADDRESS

Highway 825 & RR 225 Sturgeon County, AB

## SITE SIZE

± 128.11 acres

## SERVICES

Full municipal services to the property line

## LEGAL DESCRIPTION

Plan 7820762; Lot A

## CURRENT ZONING

I4 Medium Industrial Serviced District ⓘ

## POWER

AltaLink's Pre-SASR report indicates feasible connection options with scalability from 250 MW to 350-550 MW

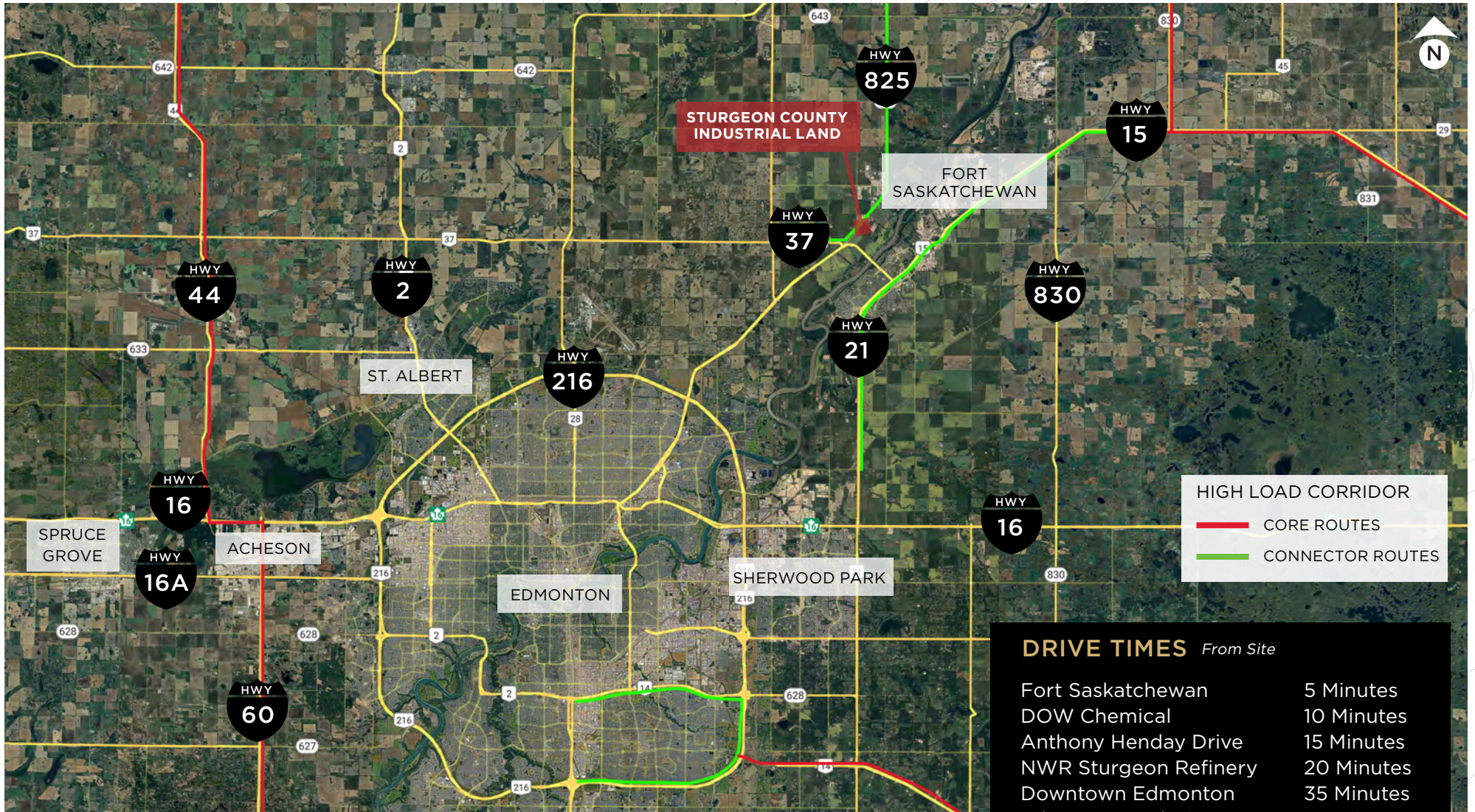


# FOR SALE | 128.11 ACRES OF INDUSTRIAL LAND

Companies Who Chose to do Business in Alberta's Industrial Heartland



# FOR SALE | 128.11 ACRES OF INDUSTRIAL LAND



## MAJOR ROADWAYS



An important route that connects the areas north of Edmonton, providing a vital corridor for both local and regional traffic.



Highway 21 in Alberta is a significant route that runs north-south, linking communities from the southern part of the province to the Edmonton area.



Known as Anthony Henday Drive, this 78 kilometer ring road encircles Edmonton.



Trans-Canada Corridor connecting Parkland to the West Coast and Port of Prince Rupert.

# HUGHES COMMERCIAL REALTY GROUP

Alberta's Premiere Award-Winning Brokerage - Built on Trust, Driven by Results



## Darin Luciw

Senior Associate | Investment Sales & Leasing  
780 573 0830 [darin@hcrgroup.ca](mailto:darin@hcrgroup.ca)

## Brandon Hughes, MBA, CCIM

Associate Broker | Investment Sales & Leasing  
780 966 0699 [brandon@hcrgroup.ca](mailto:brandon@hcrgroup.ca)

## Scott Hughes, MBA, AACI, CCIM, SIOR

Broker/Owner | Investment Sales & Leasing  
780 915 7895 [scott@hcrgroup.ca](mailto:scott@hcrgroup.ca)

This brochure has been constructed by Hughes Commercial Realty Group (HCR Group) with information provided by the Vendor and is considered to be reliable. The HCR Group does not warrant, represent or assume any responsibility for its accuracy or completeness. It is recommended that all information contained in this brochure be confirmed and verified by qualified professionals prior to being relied upon by a potential purchaser - the information is believed to be accurate when prepared but is subject to errors, omissions or changes without notice. This publication, the Hughes Commercial Realty Group name and logos are the copyrighted property of Hughes Commercial Realty Group and/or its licensor(s). You must not use such marks without the prior written permission of Hughes Commercial Realty Group. All other names, logos, product and service names, designs and slogans contained in this email and any attachments are the trademarks of their respective owners.

VIEW MORE PROPERTY LISTINGS AT [WWW.HCRGROUP.CA](http://WWW.HCRGROUP.CA)



HUGHES  
COMMERCIAL  
REALTY GROUP