

Updated: 2026

# Suite Features

25 King West  
—  
Commerce Court



**Suite  
1800**

**Rentable Area  
7,177 SF**

**Availability:** Immediately

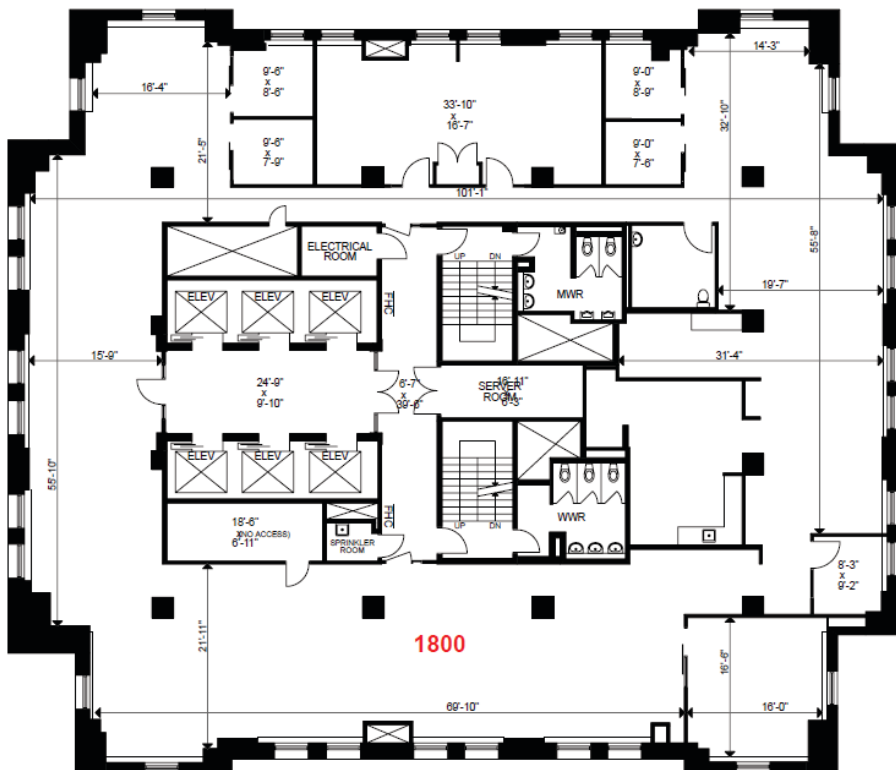
**Operating costs:**  
\$23.24 per SF

**Realty taxes:**  
\$12.52 per SF

**Total additional rent:**  
\$36.76 per SF

**Key features:**

- Full floor built out opportunity



**Kate LaBrash**  
Vice President, Office Leasing  
Broker  
QuadReal Property Group, Brokerage

T 416-673-7491  
E [Kate.LaBrash@quadreal.com](mailto:Kate.LaBrash@quadreal.com)  
W [www.quadreal.com](http://www.quadreal.com)

