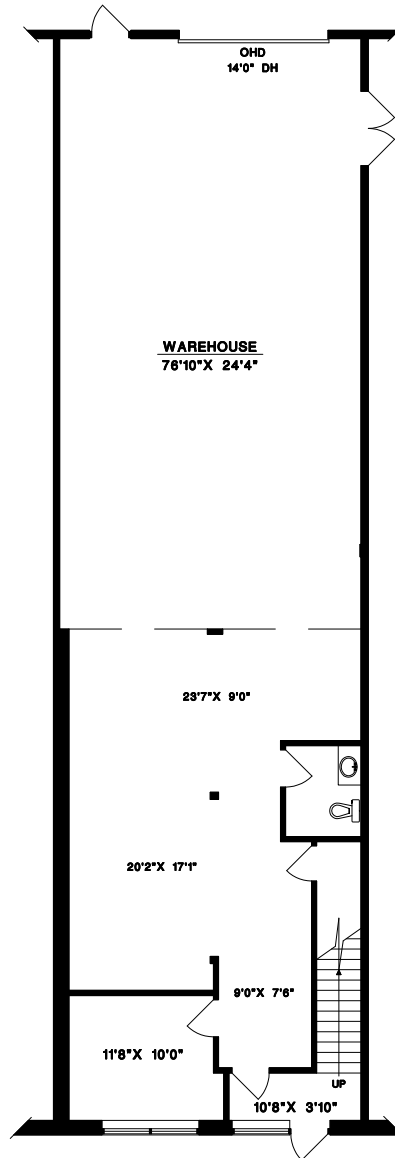
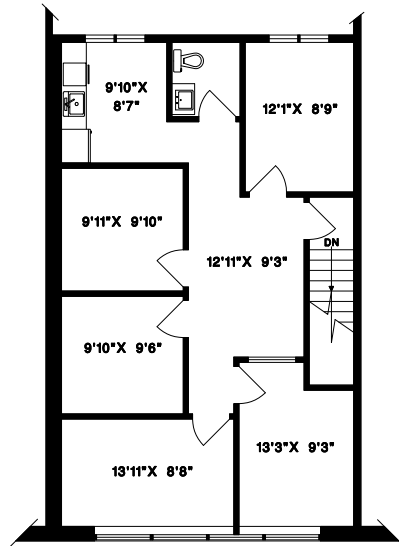


#119 - 19140 28TH AVENUE,
SURREY, B.C.



AREA CERTIFICATION: DECEMBER 31, 2025

As evidenced by our signature and in accordance with the ANSI/BOMA Z65.2-2009 Industrial Buildings: Standard Methods of Measurement, we hereby certify the Occupied Area of this SUITE to be 3,234 Square Feet.


CRAIG W. NICHOLS
MEASURE MASTERS



1" = 8'
SCALE

DRAWN BY: CN
DATE: DECEMBER 2025
REVISED:

 MEASURE MASTERS[™]
SURREY/WHITE ROCK
(604) 539-0285
surrey@measuremasters.ca

#119 - 19140 28TH AVENUE,
SURREY, B.C.

UPPER OFFICE
OCA
1,016 SQ.FT.

WAREHOUSE
OCA
2,218 SQ.FT.

AREA CERTIFICATION: DECEMBER 31, 2025

As evidenced by our signature and in accordance with the
ANSI/BOMA Z65.2-2009 Industrial Buildings: Standard Methods of Measurement,
we hereby certify the Occupied Area of this SUITE to be 3,234 Square Feet.



CRAIG W. NICHOLS
MEASURE MASTERS

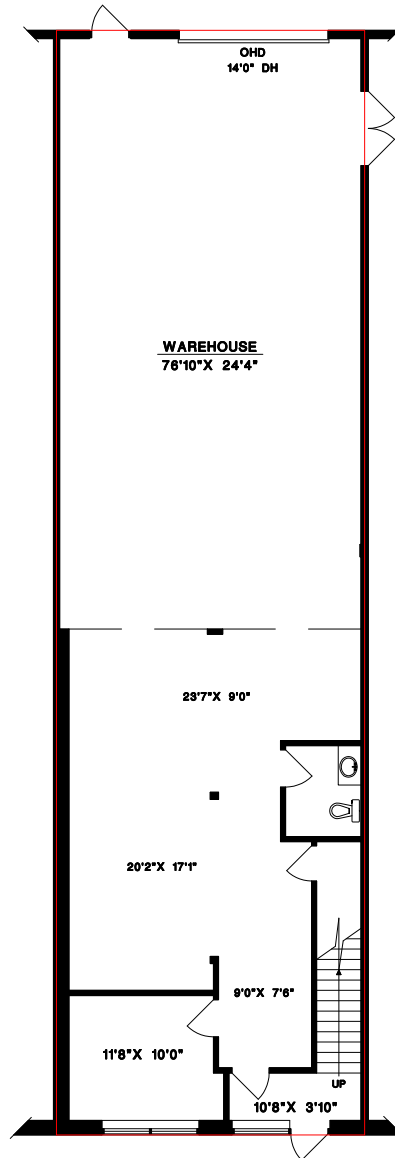
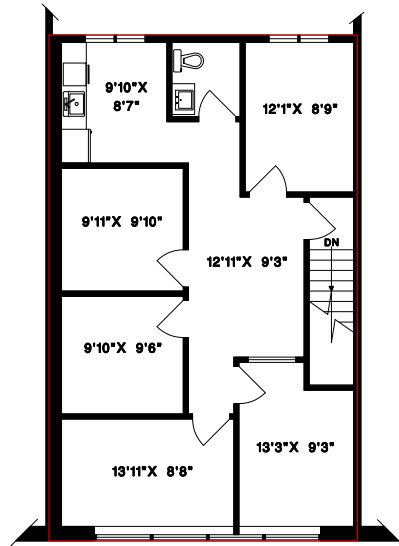


1" = 8'
SCALE

DRAWN BY: CN
DATE: DECEMBER 2025
REVISED:



#119 - 19140 28TH AVENUE,
SURREY, B.C.



AREA CERTIFICATION: DECEMBER 31, 2025

As evidenced by our signature and in accordance with the ANSI/BOMA Z65.2-2009 Industrial Buildings: Standard Methods of Measurement, we hereby certify the Occupied Area of this SUITE to be 3,234 Square Feet.

CRAIG W. NICHOLS
MEASURE MASTERS



1" = 8'
SCALE

DRAWN BY: CN
DATE: DECEMBER 2025
REVISED:

MEASURE MASTERS
SURREY/WHITE ROCK
(604) 539-0285
surrey@measuremasters.ca