

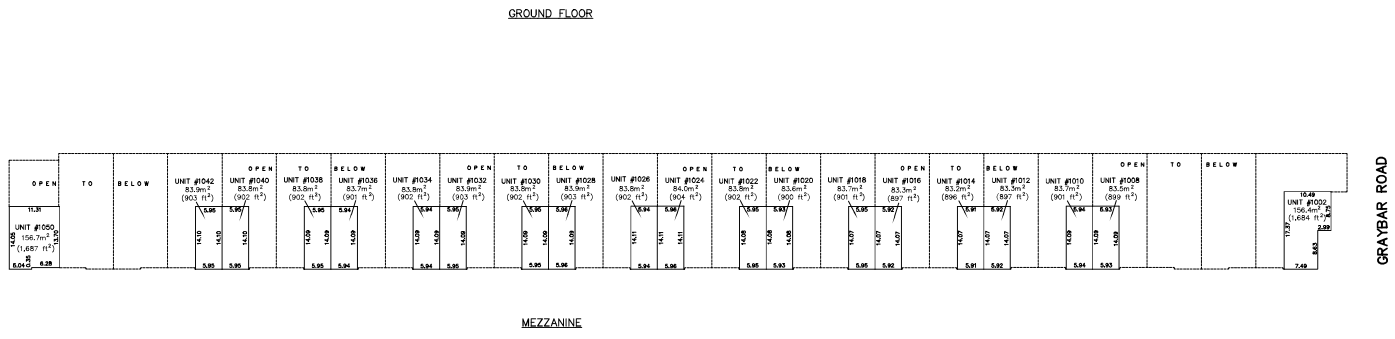
**SKETCH PLAN TO ACCOMPANY LEASE OF A BUILDING ON LOT A SECTIONS 9, 10, AND 16
BLOCK 4 NORTH RANGE 4 WEST NEW WESTMINSTER DISTRICT PLAN EPP128723**

PARCEL IDENTIFIER (PID): 032-304-866
 Civic ADDRESS:
 #6811 GRAYBAR ROAD,
 RICHMOND, BC
 SCALE 1:400
 ALL HORIZONTAL GROUND-LEVEL DISTANCES ARE IN METRES



UNIT NUMBER	GROUND LEVEL	MEZZANINE LEVEL	TOTAL AREA
UNIT #1048	314.3m ² (3,383 ft ²)	314.1m ² (3,381 ft ²)	
UNIT #1046	314.5m ² (3,385 ft ²)	314.3m ² (3,382 ft ²)	
UNIT #1042	314.5m ² (3,385 ft ²)	314.3m ² (3,382 ft ²)	
UNIT #1040	314.5m ² (3,385 ft ²)	314.3m ² (3,382 ft ²)	
UNIT #1038	314.5m ² (3,385 ft ²)	314.3m ² (3,382 ft ²)	
UNIT #1036	314.4m ² (3,384 ft ²)	314.2m ² (3,380 ft ²)	
UNIT #1034	314.5m ² (3,385 ft ²)	314.3m ² (3,382 ft ²)	
UNIT #1032	314.4m ² (3,384 ft ²)	314.2m ² (3,380 ft ²)	
UNIT #1030	314.5m ² (3,385 ft ²)	314.3m ² (3,382 ft ²)	
UNIT #1028	314.4m ² (3,384 ft ²)	314.2m ² (3,380 ft ²)	
UNIT #1026	314.5m ² (3,385 ft ²)	314.3m ² (3,382 ft ²)	
UNIT #1024	314.5m ² (3,385 ft ²)	314.3m ² (3,382 ft ²)	
UNIT #1022	314.5m ² (3,385 ft ²)	314.3m ² (3,382 ft ²)	
UNIT #1020	314.5m ² (3,385 ft ²)	314.3m ² (3,382 ft ²)	
UNIT #1018	314.5m ² (3,385 ft ²)	314.3m ² (3,382 ft ²)	
UNIT #1016	314.5m ² (3,385 ft ²)	314.3m ² (3,382 ft ²)	
UNIT #1014	314.5m ² (3,385 ft ²)	314.3m ² (3,382 ft ²)	
UNIT #1012	314.5m ² (3,385 ft ²)	314.3m ² (3,382 ft ²)	
UNIT #1010	314.5m ² (3,385 ft ²)	314.3m ² (3,382 ft ²)	
UNIT #1008	314.5m ² (3,385 ft ²)	314.3m ² (3,382 ft ²)	
UNIT #1006	314.5m ² (3,385 ft ²)	314.3m ² (3,382 ft ²)	
UNIT #1004	314.5m ² (3,385 ft ²)	314.3m ² (3,382 ft ²)	
UNIT #1002	425.0m ² (4,552 ft ²)	315.7m ² (3,377 ft ²)	425.0m ² (4,552 ft ²)
TOTAL	279.6m ² (2,979 ft ²)	192.2m ² (2,067 ft ²)	471.8m ² (5,046 ft ²)

UNIT NUMBER	GROUND LEVEL	MEZZANINE LEVEL	TOTAL AREA
1002	425.0m ² (4,552 ft ²)	315.7m ² (3,377 ft ²)	425.0m ² (4,552 ft ²)
1004	314.5m ² (3,385 ft ²)	314.3m ² (3,382 ft ²)	314.5m ² (3,385 ft ²)
1006	314.5m ² (3,385 ft ²)	314.3m ² (3,382 ft ²)	314.5m ² (3,385 ft ²)
1008	314.5m ² (3,385 ft ²)	314.3m ² (3,382 ft ²)	314.5m ² (3,385 ft ²)
1010	314.5m ² (3,385 ft ²)	314.3m ² (3,382 ft ²)	314.5m ² (3,385 ft ²)
1012	314.5m ² (3,385 ft ²)	314.3m ² (3,382 ft ²)	314.5m ² (3,385 ft ²)
1014	314.5m ² (3,385 ft ²)	314.3m ² (3,382 ft ²)	314.5m ² (3,385 ft ²)
1016	314.5m ² (3,385 ft ²)	314.3m ² (3,382 ft ²)	314.5m ² (3,385 ft ²)
1018	314.5m ² (3,385 ft ²)	314.3m ² (3,382 ft ²)	314.5m ² (3,385 ft ²)
1020	314.5m ² (3,385 ft ²)	314.3m ² (3,382 ft ²)	314.5m ² (3,385 ft ²)
1022	314.5m ² (3,385 ft ²)	314.3m ² (3,382 ft ²)	314.5m ² (3,385 ft ²)
1024	314.5m ² (3,385 ft ²)	314.3m ² (3,382 ft ²)	314.5m ² (3,385 ft ²)
1026	314.5m ² (3,385 ft ²)	314.3m ² (3,382 ft ²)	314.5m ² (3,385 ft ²)
1028	314.4m ² (3,384 ft ²)	314.2m ² (3,380 ft ²)	314.4m ² (3,384 ft ²)
1030	314.5m ² (3,385 ft ²)	314.3m ² (3,382 ft ²)	314.5m ² (3,385 ft ²)
1032	314.4m ² (3,384 ft ²)	314.2m ² (3,380 ft ²)	314.4m ² (3,384 ft ²)
1034	314.5m ² (3,385 ft ²)	314.3m ² (3,382 ft ²)	314.5m ² (3,385 ft ²)
1036	314.5m ² (3,385 ft ²)	314.3m ² (3,382 ft ²)	314.5m ² (3,385 ft ²)
1038	314.5m ² (3,385 ft ²)	314.3m ² (3,382 ft ²)	314.5m ² (3,385 ft ²)
1040	314.5m ² (3,385 ft ²)	314.3m ² (3,382 ft ²)	314.5m ² (3,385 ft ²)
1042	314.5m ² (3,385 ft ²)	314.3m ² (3,382 ft ²)	314.5m ² (3,385 ft ²)
1044	314.5m ² (3,385 ft ²)	314.3m ² (3,382 ft ²)	314.5m ² (3,385 ft ²)
1046	314.5m ² (3,385 ft ²)	314.3m ² (3,382 ft ²)	314.5m ² (3,385 ft ²)
1048	314.5m ² (3,385 ft ²)	314.3m ² (3,382 ft ²)	314.5m ² (3,385 ft ²)
1050	314.5m ² (3,385 ft ²)	314.3m ² (3,382 ft ²)	314.5m ² (3,385 ft ²)
TOTAL	1068.8m ² (11,468 ft ²)	686.8m ² (7,362 ft ²)	1755.6m ² (18,830 ft ²)
TOTAL LEASABLE AREA	1068.8m ² (11,468 ft ²)	686.8m ² (7,362 ft ²)	1755.6m ² (18,830 ft ²)
MECHANICAL ROOM	18.8m ² (202 ft ²)	-	-
ELECTRICAL ROOM	18.0m ² (193 ft ²)	-	-
TOTAL FLOOR AREA	1087.6m ² (11,661 ft ²)	686.8m ² (7,362 ft ²)	1774.4m ² (18,992 ft ²)
TOTAL AREA:	9,442.4 m ²		101,637 ft ²



© COPYRIGHT
 MATSON PECK & TOPUSS
 SURVEYORS & ENGINEERS
 6725 - 1125 HERRINGWAY
 RICHMOND, B.C. V6V 2G7
 PH: 604-270-8787
 FAX: 604-270-8788
 CAMPLD 19225-04-1SE-000-000

NOTE:
 LEASE DIMENSIONS ARE MEASURED TO OUTSIDE FACE
 OF EXTERIOR WALLS AND MEZZANINE WALLS TO THE
 COMMON AREA SIDE OF COMMON WALLS.
 AND TO THE CENTRELINE OF EXTERIOR WALLS.

DATE OF SURVEY: OCTOBER 29, 2025