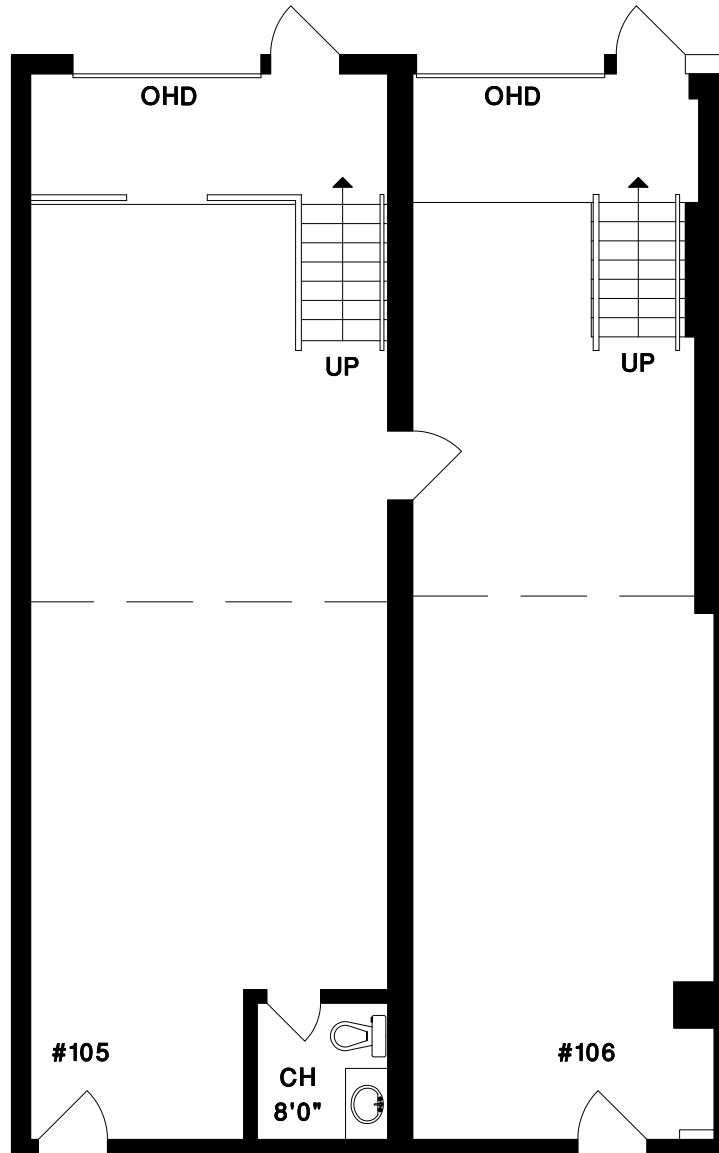


OCCUPANT AREA
 #105 786 SQ.FT.
 #106 690 SQ.FT.
TOTAL 1476 SQ.FT.

**338 W. 8TH AVENUE,
 VANCOUVER, B.C.**

#105 - #106

- 1.) UNDERSIDE OF TRUSSES - 8'5"
- 2.) CEILING HEIGHT - 9'3"
- 5.) UNDERSIDE OF SPRINKLERS - 7'6"



- 1.) UNDERSIDE OF TRUSSES - 8'5"
- 2.) CEILING HEIGHT - 9'4"
- 5.) UNDERSIDE OF SPRINKLERS - 7'5"
- CH MIN - 7'11"

- 1.) UNDERSIDE OF TRUSSES - 13'4"
- 2.) CEILING HEIGHT - 14'2"
- 5.) UNDERSIDE OF SPRINKLERS - 11'7"

- 1.) UNDERSIDE OF TRUSSES - 13'4"
- 2.) CEILING HEIGHT - 14'2"
- 5.) UNDERSIDE OF SPRINKLERS - 11'4"

- 1.) UNDERSIDE OF TRUSSES - 12'1"
- 2.) CEILING HEIGHT - 13'0"
- 3.) UNDERSIDE OF HVAC UNIT - 10'1"
- 4.) UNDERSIDE OF PLUMBING - 10'7"
- 5.) UNDERSIDE OF SPRINKLERS - 11'5"

- 1.) UNDERSIDE OF TRUSSES - 11'7"
- 2.) CEILING HEIGHT - 13'0"
- 3.) UNDERSIDE OF HVAC UNIT - 10'1"
- 4.) UNDERSIDE OF PLUMBING - 10'7"
- 5.) UNDERSIDE OF SPRINKLERS - 11'5"

ADJ. UNIT

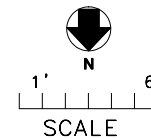
#105

CH
8'0"

#106

EXT.

HW TANK
ABOVE



MEASURE MASTERS
 VANCOUVER/OTTAWA
 (604) 931-8685
 JAN. 2012

All measurements must be verified prior to construction or renovations.

*In accordance with
 Industrial Buildings: Standard
 Methods of Measurement
 (ANSI/BOMA Z65.2 - 2012)