

For Lease  
Rare Full Building Opportunity

# 88 EPENDER

**Alain Rivère**

PERSONAL REAL ESTATE CORPORATION

Vice President  
High Technology Facilities Group  
604 662 5110  
alain.rivere@cbre.com

**Andre Alie Day**

PERSONAL REAL ESTATE CORPORATION

Senior Associate  
High Technology Facilities Group  
604 662 5137  
andre.alieday@cbre.com

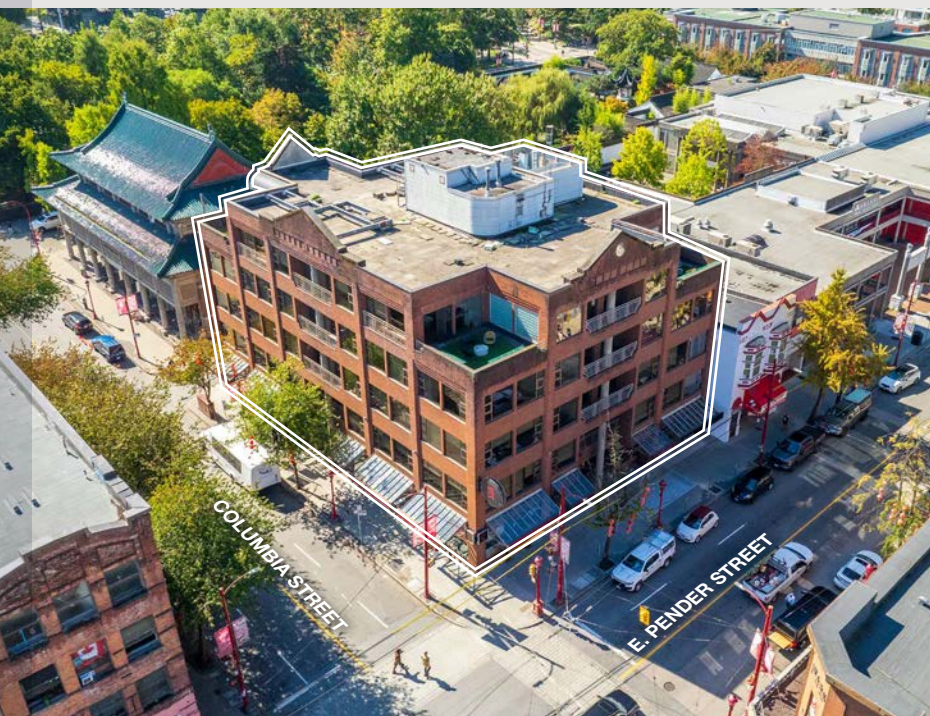
**Adrian Beruschi**

PERSONAL REAL ESTATE CORPORATION

Senior Vice President  
Retail Properties  
604 662 5138  
adrian.beruschi@cbre.com

# THE OPPORTUNITY

88 East Pender Street  
Vancouver, BC



Discover a unique leasing opportunity in Chinatown, Vancouver. This building blends historical charm with bright and modern office space. Its standout feature is four corner patios on the fifth floor and a south west facing patio on the fourth floor, providing a tranquil urban retreat overlooking the Vancouver Skyline and Dr. Sun Yat-Sen Chinese gardens. The second and third floors similarly benefit from North and South facing outdoor spaces.

Strategically located near Vancouver's stadium district and between two Skytrain/Subway Stations, 88 E. Pender offers close proximity to Vancouver's downtown core and boasts convenient access.

Inside, the building is home to bright and airy office spaces with board rooms, open kitchen spaces, and private offices. Opportunity for an improvement allowance to update the second, third, and fourth floors to match the recently renovated fifth floor.

Full floors available. Can be leased together or separately, from 4,000-36,000 SF.

# BUILDING DETAILS

88 e. pender



88 E. PENDER



Beautiful 5-storey building



Rare ability to secure entire building



Ground floor corner retail unit



Two passenger elevators

## ADDRESS

88 East Pender Street, Vancouver BC

## PREMISES

Subject to final re-measurement.

Retail/Ground Level	3,944 SF	Assembly/retail
Unit 200	8,428 SF	Assembly
Unit 300	8,540 SF	Assembly
Unit 400	8,152 SF	Office
Unit 500	6,314 SF	Office
<b>Total</b>	<b>35,378 SF</b>	



Corner location with ample signage



Large floor to ceiling windows

## AVAILABILITY

February 2025

## BASE RENT

Contact Agent

## OP. COSTS

\$17.43

## USE

Office, School, Assembly, Retail - Contact Agent

## TI ALLOWANCE

Contact Agent

## PARKING

37 secured stalls, at market rents. Ample parking available in neighbouring Chinatown Parkade



Patios on all floors, including 4 rooftop patios with views

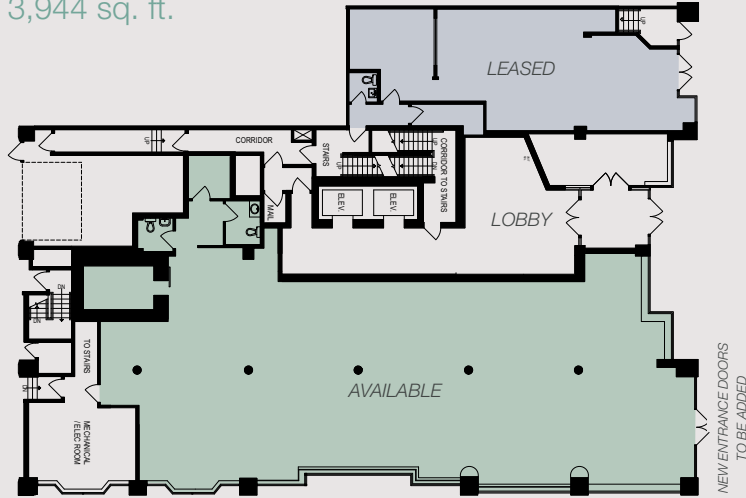


Adjacent to the Dr. Sun Yat Sen Chinese Gardens

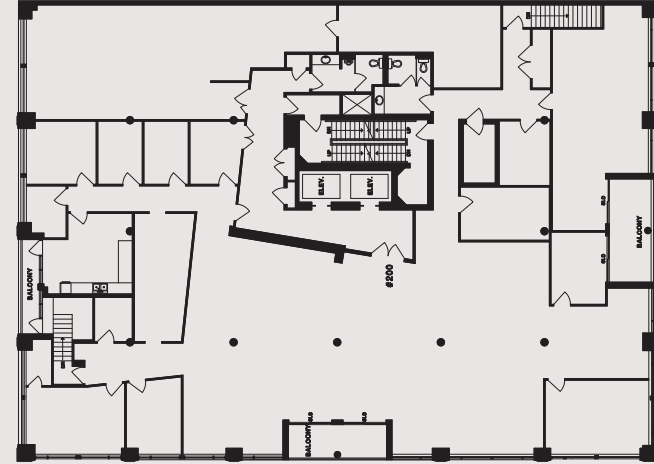
# 88 E PENDER



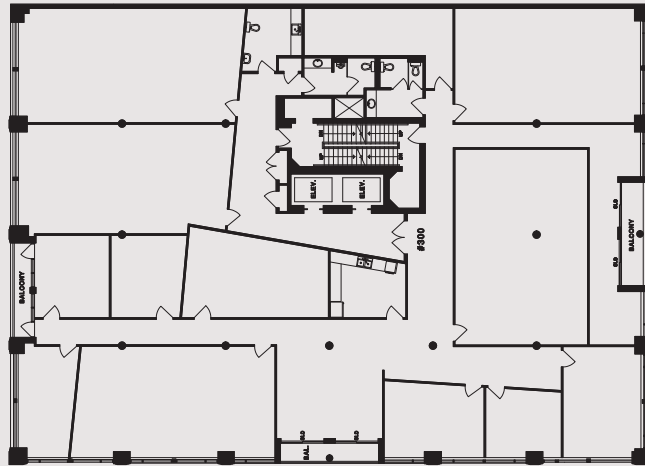
Ground Floor  
3,944 sq. ft.



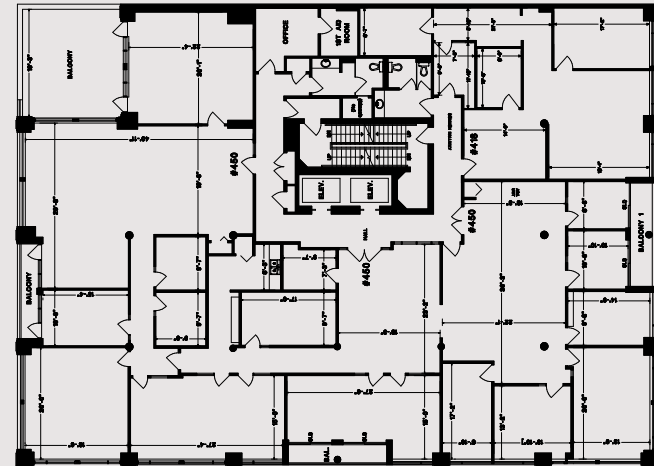
Second Floor | Assembly  
8,428 sq. ft.



Third Floor | Assembly  
8,540 sq. ft.



Fourth Floor | Office  
8,152 sq. ft.



# FLOOR PLANS

88 e. pender

Existing improvements may be modified as Landlord Work, or tenant improvement allowance to be provided. Contact Agent for details.

# THE NEIGHBOURHOOD

88 e. pender



Located in the Downtown East area of Vancouver, historic Chinatown is one of the city's few distinct cultural neighbourhoods, bringing tourism, emerging chefs and restaurants, artists, hip cocktail bars, and small business activity to the area. Downtown East is known for its diverse community, culture, architecture, and is one of Vancouver's fastest changing neighbourhoods. The neighbourhood has attracted an influx of high-tech start-ups, digital animation studios, and new media entrepreneurs bringing new energy and vibrancy to the area.

Known as a historic site and with growing amenities, Chinatown offers an eclectic blend of vintage charm and modern convenience. The area serves as a bridge between the past and the present, making it an ideal location for both business and leisure.

Situated in the heart of Chinatown, 88 E. Pender is in a prime location office and retail tenants alike. The neighbourhood is known for its buzzing food scene including traditional Asian bakeries, dim sum restaurants, trendy cafes, and hip cocktail bars. The area has a growing retail offering including vintage clothing, furniture, streetwear, and home goods stores.

The building's location ensures that the rest of downtown Vancouver is within a comfortable walking distance. In particular, both Gastown and the stadium district are just a short stroll away.



129

Bars/Cafes



156

Restaurants



112

Retail Stores



# THE LOCATION

88 e. pender

## Restaurants and retail nearby -

- + Kissa Tanto
- + Mello Donuts
- + Sai Woo
- + Virtuous Pie
- + MILA Plant Based
- + Bao Bei
- + Fiorino
- + Fat Mao Noodles
- + Say Hey Cafe & Deli
- + Chinatown BBQ
- + Harvest
- + Phnom Penh
- + Hey Kokomo
- + Hunnybee
- + Barbara
- + The Keefer Bar
- + Livestock
- + Canton-Sardine Gallery
- + Relove Furniture
- + Pizza Coming Soon
- + Meo

# LOCAL CONNECTIVITY

88 e. pender



**T** Main Street-Science World Station

 8 MINUTE WALK

**T** 6 MINUTE WALK 

**T** Stadium-Chinatown Station

15 MINUTE WALK 

Granville Station

**T** Burrard Station

**T** Waterfront Station

**88 E. PENDER**

 12 MINUTE WALK

  
Transit Score  
**100**

  
Walk Score  
**98**

  
Bike Score  
**99**

  
SeaBus to  
North Vancouver

  
Harbour Air  
Seaplane Terminal

  
Walk-times to  
Transit Stations

-  Waterfront Station
-  Burrard Station
-  Granville Station
-  Stadium-Chinatown
-  Main Street-Science World

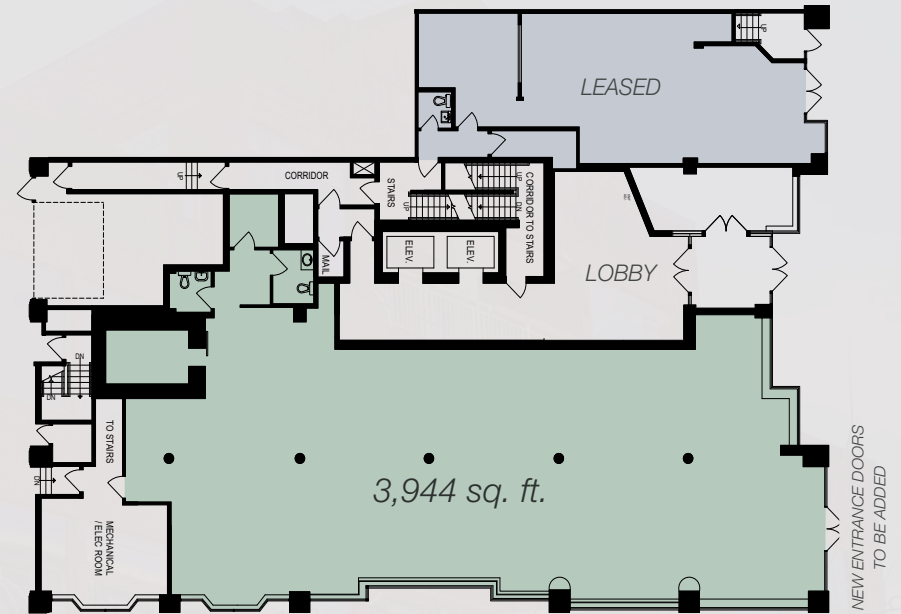
# RETAIL

88 e. pender

The available ground floor at 88 E. Pender consists of 3,944 square feet of single level retail boasting over 83 feet of frontage. The unit's prime corner location combined with its abundance of signage presents a rare flagship opportunity for a large retailer seeking a high-profile location in Chinatown.

Under the HA-1 Zoning, retailer categories can include general retail, furniture store, schools, restaurant, and fitness centre.

Contact listing agents for asking rents and additional rent details.



For Lease

# 88 E PENDER

For more information, contact listing agents -

**Alain Rivère**

PERSONAL REAL ESTATE CORPORATION

Vice President  
High Technology Facilities Group  
604 662 5110  
alain.riviere@cbre.com

**Andre Alie Day**

PERSONAL REAL ESTATE CORPORATION

Senior Associate  
High Technology Facilities Group  
604 662 5137  
andre.alieday@cbre.com

**Adrian Beruschi**

PERSONAL REAL ESTATE CORPORATION

Senior Vice President  
Retail Properties  
604 662 5138  
adrian.beruschi@cbre.com

**CBRE**

CBRE Limited, Real Estate Brokerage  
Suite 2500 - 1021 West Hastings Street, Vancouver, BC

This disclaimer shall apply to CBRE Limited, Real Estate Brokerage, and to all other divisions of the Corporation; to include all employees and independent contractors ("CBRE"). All references to CBRE Limited herein shall be deemed to include CBRE, Inc. The information set out herein, including, without limitation, any projections, images, opinions, assumptions and estimates obtained from third parties (the "Information") has not been verified by CBRE, and CBRE does not represent, warrant or guarantee the accuracy, correctness and completeness of the Information. CBRE does not accept or assume any responsibility or liability, direct or consequential, for the Information or the recipient's reliance upon the Information. The recipient of the Information should take such steps as the recipient may deem necessary to verify the Information prior to placing any reliance upon the Information. The Information may change and any property described in the Information may be withdrawn from the market at any time without notice or obligation to the recipient from CBRE. CBRE and the CBRE logo are the service marks of CBRE Limited and/or its affiliated or related companies in other countries. All other marks displayed on this document are the property of their respective owners. All Rights Reserved.