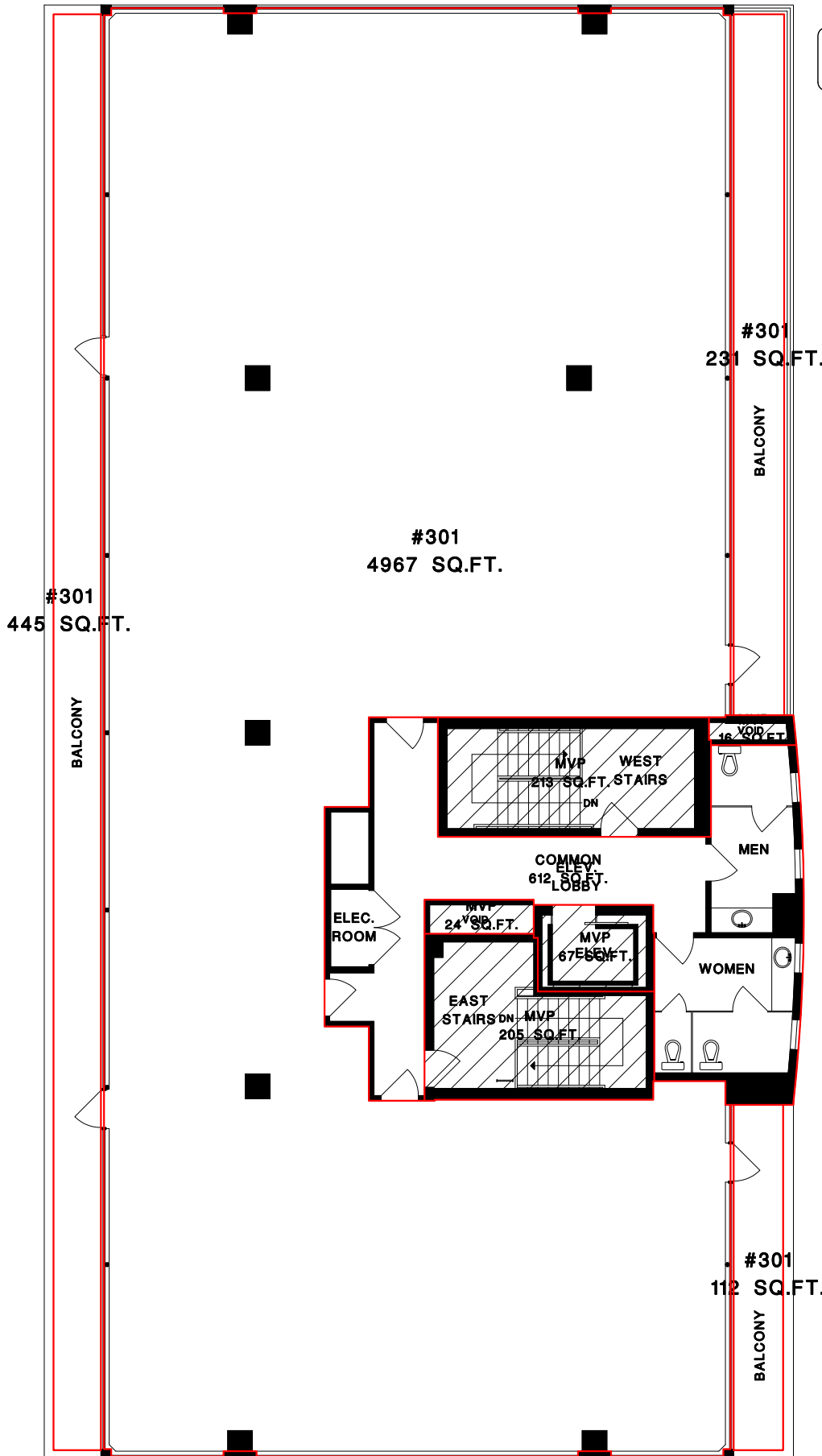


EXISTING PROPERTY AT:

1001 COLUMBIA STREET
NEW WESTMINSTER, B.C.

BUILDING E - 3RD FLOOR



BOUNDARY AREA 6104 SQ.FT.
PLUS BALCONIES 788 SQ.FT.
TOTAL 6892 SQ.FT.

*Calculations in accordance
with BOMA Office Standards
(ANSI/BOMA Z65.1-2017)

