



Unit 4-145 Schoolhouse St, Coquitlam, BC

FOR LEASE

- ▶ Industrial warehouse, centrally located in Coquitlam with easy access to Highway #1 on ramp
- ▶ Zoning M-2
- ▶ On site parking available
- ▶ Available Now!



VALLEY COMMERCIAL TEAM

Gary Niesner*

Sales, Leasing & Investment

604 514 6832

garyn@naicommercial.ca

*Personal Real Estate Corporation

Angie MacDonald*

Sales, Leasing & Investment

604 514 6823

amacdonald@naicommercial.ca

*Personal Real Estate Corporation

NAI Commercial (Langley) Ltd.

20353 64th Avenue, Suite 214

Langley, BC V2Y 1N5

+ 1 604 683 7535

naicommercial.ca

Unit 4

145 Schoolhouse St

Coquitlam, BC

Property Summary

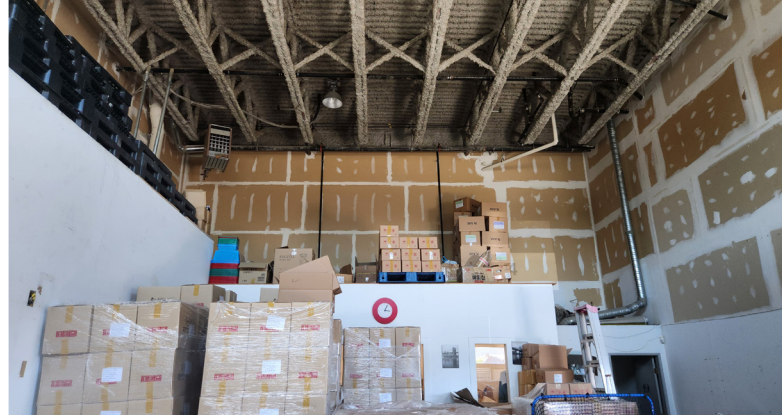
Unit Size:	1,185 SF
Net Rent:	\$20.00/SF
Additional Rate:	\$10.79/SF
Gross Rent:	\$3,040.51/month + GST
Availability:	Immediate
Unit Description:	This unit has a warehouse, a small office and a washroom

Location

Ideal location in Coquitlam with easy access to Highway #1 on ramp.

Zoning

M-2: Allows the following office uses: industrial business, clerical, or professional uses related to architectural, engineering services, data processing, janitorial services, laboratories, labor organization, trade schools, scientific, technical research, development and test facilities, security guard and patrol services, contractor service and public service.



VALLEY COMMERCIAL TEAM

Gary Niesner*

Sales, Leasing & Investment

604 514 6832

garyn@naicommercial.ca

*Personal Real Estate Corporation

Angie MacDonald*

Sales, Leasing & Investment

604 514 6823

amacdonald@naicommercial.ca

*Personal Real Estate Corporation

NAI Commercial

20353 64th Avenue, Suite 214

Langley, BC V2Y 1N5

+ 1 604 683 7535 | naicommercial.ca