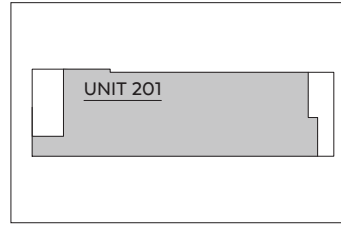


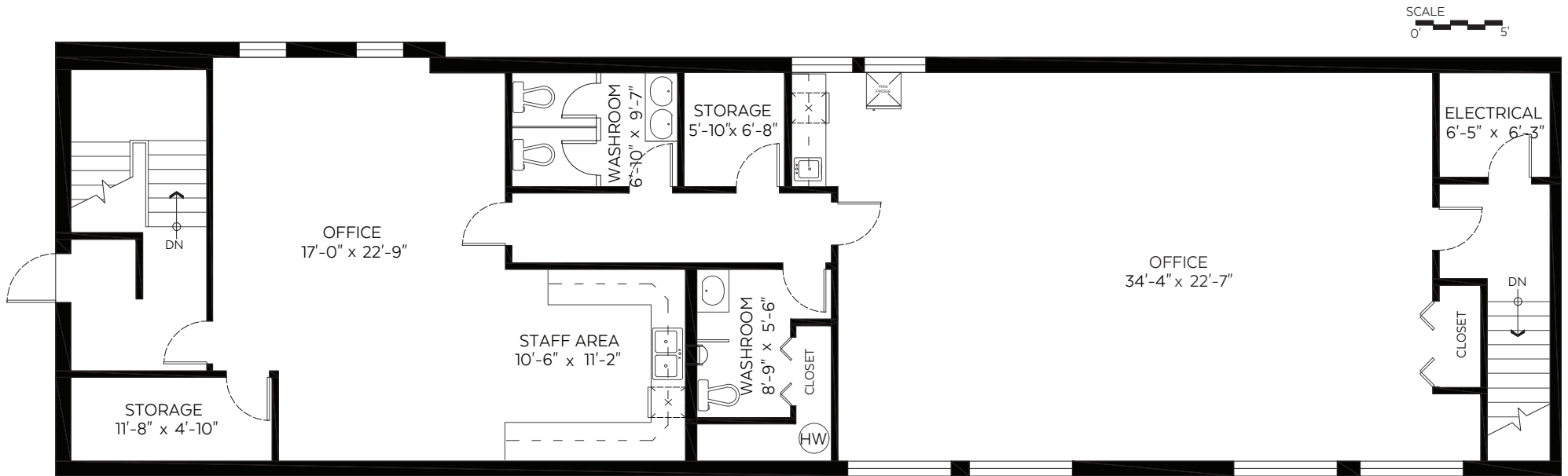


**MICHAEL SHILTON, CCIM**  
 COMMERCIAL & RESIDENTIAL REAL ESTATE INVESTMENT ADVISOR  
 Michael Shilton Personal Real Estate Corporation  
 604.897.2363  
 michael@michaelshilton.com  
 www.MichaelShilton.com



32423 Lougheed Highway Mission, B.C.

	Rentable Area
#201:	1,888 sq.ft.
<b>Second Floor Total:</b>	<b>1,888 sq.ft.</b>



2nd Floor Tenant Area



Measured on: June 11, 2020

The floor plan is not suitable for architectural/construction and is covered under E&O. © Excelsior Measuring Inc. 2020. All rights reserved for Excelsior Measuring Inc. Users shall not publish and distribute such material (in whole or in part) and/or incorporate it in other works in any form.

