



AVISON YOUNG

For Sale

849 Premier Way
Sherwood Park, AB



Millennium Commercial Building

Premium office space in
a premium location

- 7,800 sf available
- Located in the developing area of north Sherwood Park
- Within close proximity to countless amenities including recreation centre, restaurants and professional services
- Prominent building signage
- Underground parking



Get more information

Karnie Vertz

Principal
+1 780 938 7551
karnie.vertz@avisonyoung.com

Peter Schwann

Principal
+1 780 970 7228
peter.schwann@avisonyoung.com



For Sale

849 Premier Way
Sherwood Park, AB

Offering Summary

Available:	3rd Floor: 7,800 sf
Parking:	3.7/1,000 sf leased Surface stalls at no charge Underground (for sale or lease)
Sale Price:	\$3,300,000
Condo Fees:	\$8.60 psf (estimate)

Property Highlights



Modern office build out features multiple private offices, collaborative work space, meeting rooms, and staff lounge



Abundance of windows allow for excellent natural light



Elevator access



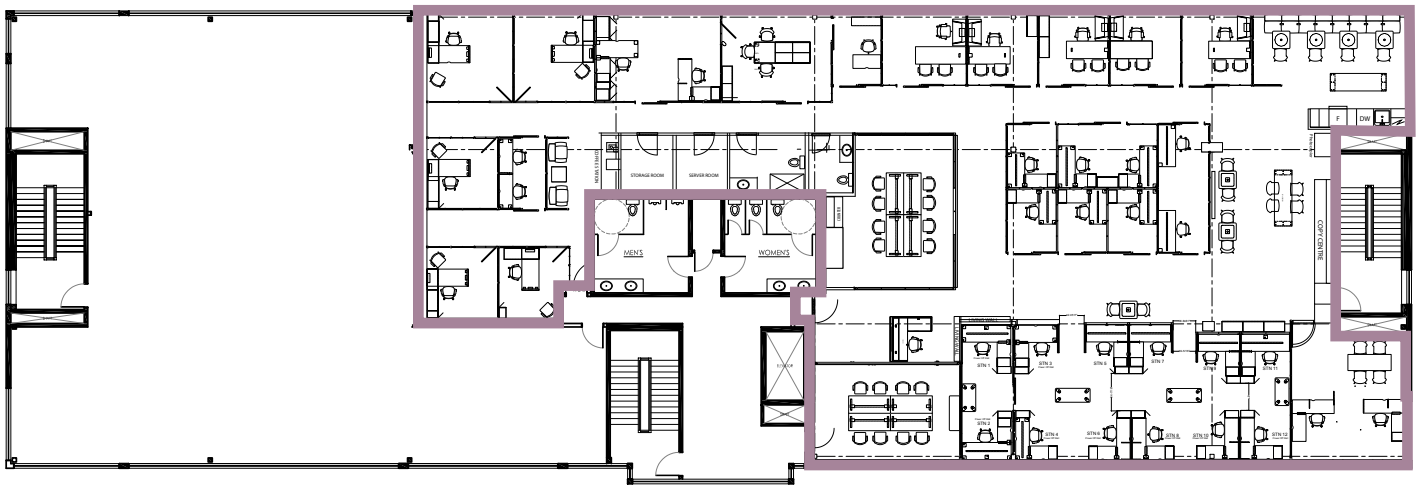
Ample parking underground and surface around the building



Amenity rich location includes restaurants, fitness and retail all within walking distance

7,800 sf space offers state of the art design and architectural features.







Let's talk.

Karnie Vertz

Principal

+1 780 938 7551

karnie.vertz@avisonyoung.com

Peter Schwann

Principal

+1 780 970 7228

peter.schwann@avisonyoung.com

[CLICK TO VIEW ONLINE](#)

Excellent
connectivity

AVISON YOUNG

© 2025 Avison Young Commercial Real Estate Services, LP. All rights reserved. E. & O.E.: The information contained herein was obtained from sources which we deem reliable and, while thought to be correct, is not guaranteed by Avison Young