

FOR LEASE

BUILD-TO-SUIT OPPORTUNITY IN
INKSTER INDUSTRIAL PARK



SHEPPARD STREET

WINNIPEG, MB

PROPERTY HIGHLIGHTS

- Up to 75,000 square feet on approximately 6 acres
- Prime Inkster Industrial Park location
- Location provides for excellent access to key transportation routes
- Landlord will work with potential tenant to provide custom designed facility to meet specific requirements

CONTACT

TREVOR CLAY

Principal
(204) 985-1365
trevor.clay@capitalgrp.ca

LUKE PAULSEN

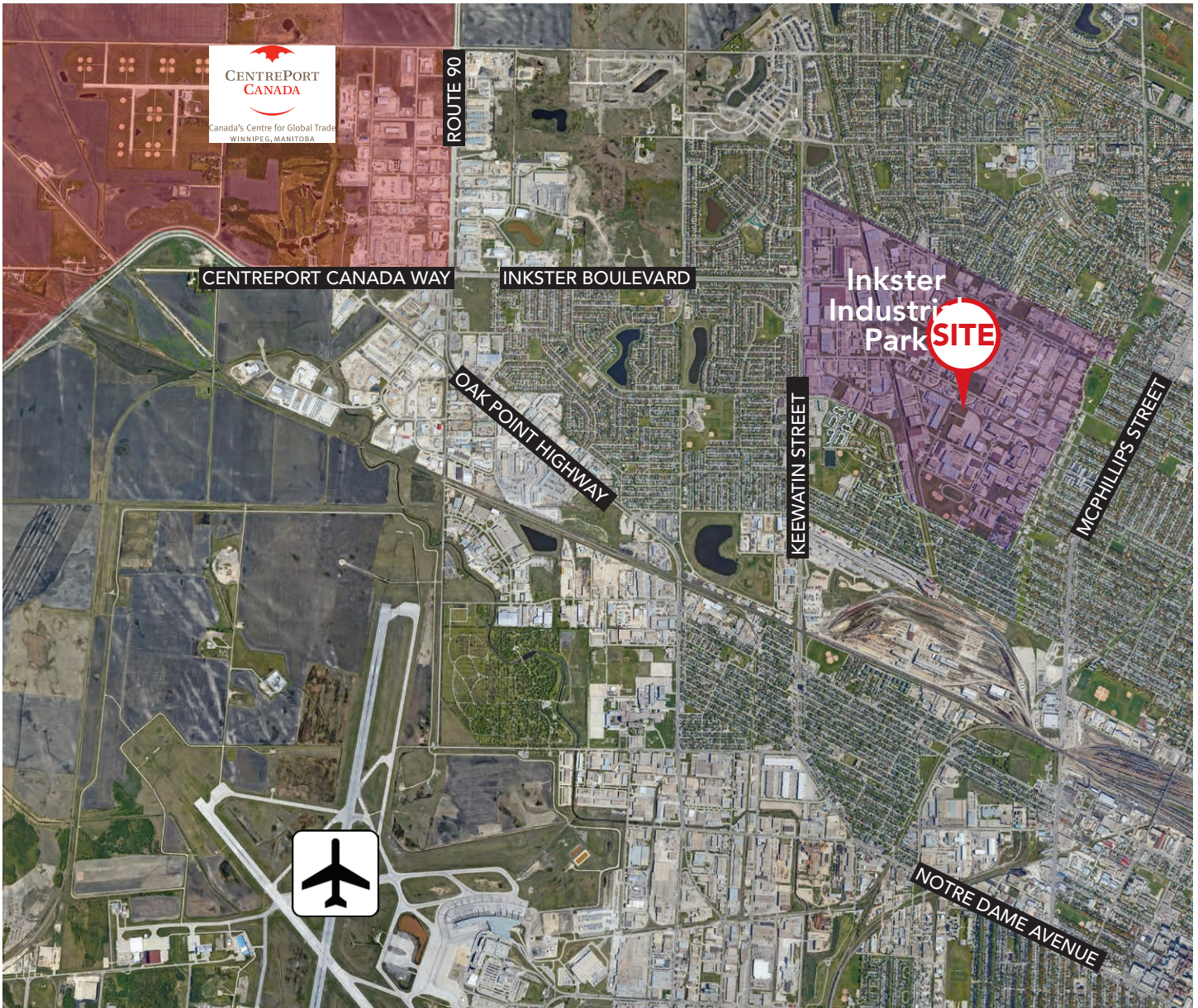
Advisor - Sales & Leasing
(204) 985-1358
luke.paulsen@capitalgrp.ca

ERIC OTT

Advisor - Sales & Leasing
(204) 985-1378
eric.ott@capitalgrp.ca

SHEPPARD STREET WINNIPEG, MB

NORTHWEST WINNIPEG OVERVIEW AERIAL



INKSTER INDUSTRIAL PARK OVERVIEW

- Inkster Industrial Park is Winnipeg's largest and offers 9.3 million square feet of space on 600 acres of land
- Located in Northwest Winnipeg, Inkster park offers excellent access to critical transportation routes including Winnipeg's brand new Centreport Canada Way
- Its location in proximity to James Richardson International Airport is of significant value to many users
- The Park is also well serviced by rail with a direct connection to CPR's Weston Yards

SHEPPARD STREET WINNIPEG, MB

INKSTER INDUSTRIAL PARK AERIAL



CONTACT

TREVOR CLAY

Principal
(204) 985-1365
trevor.clay@capitalgrp.ca

LUKE PAULSEN

Advisor - Sales & Leasing
(204) 985-1358
luke.paulsen@capitalgrp.ca

ERIC OTT

Advisor - Sales & Leasing
(204) 985-1378
eric.ott@capitalgrp.ca



Disclaimer: Capital Commercial Real Estate Services Inc. ("Capital") does not accept or assume any responsibility or liability, direct or consequential, for the information set out herein, including, without limitation, any projections, images, opinions, assumptions and estimates obtained from third parties. This information has not been verified by Capital, and Capital does not guarantee the accuracy, correctness and completeness of this information. The recipient of this information should take such steps as the recipient may deem necessary to verify the information in this document prior to placing any reliance upon it. The information may change and any property described in this document may be withdrawn from the market at any time without notice or obligation to the recipient from Capital.