

Edinburgh Place

3,952 sf for Lease



VIEW THE **360**
VIRTUAL TOUR

Damon Harmon, CPA, CGA
403.875.3133
dharmon@cresa.com

Saige Clarke
587.438.2109
sclarke@cresa.com

cresa

Edinburgh Place



**3,952 sf available
immediately**

Space Profile

| | |
|--------------------|----------------------------|
| Premises: | Suite A: 3,952 sf |
| Availability: | Immediately |
| Term: | Flexible |
| Rental Rate: | Gross rates |
| T.I.A.: | As-is |
| Op. Costs & Taxes: | \$12.28 per sf (est. 2026) |
| Parking: | 1 stall at market rates |



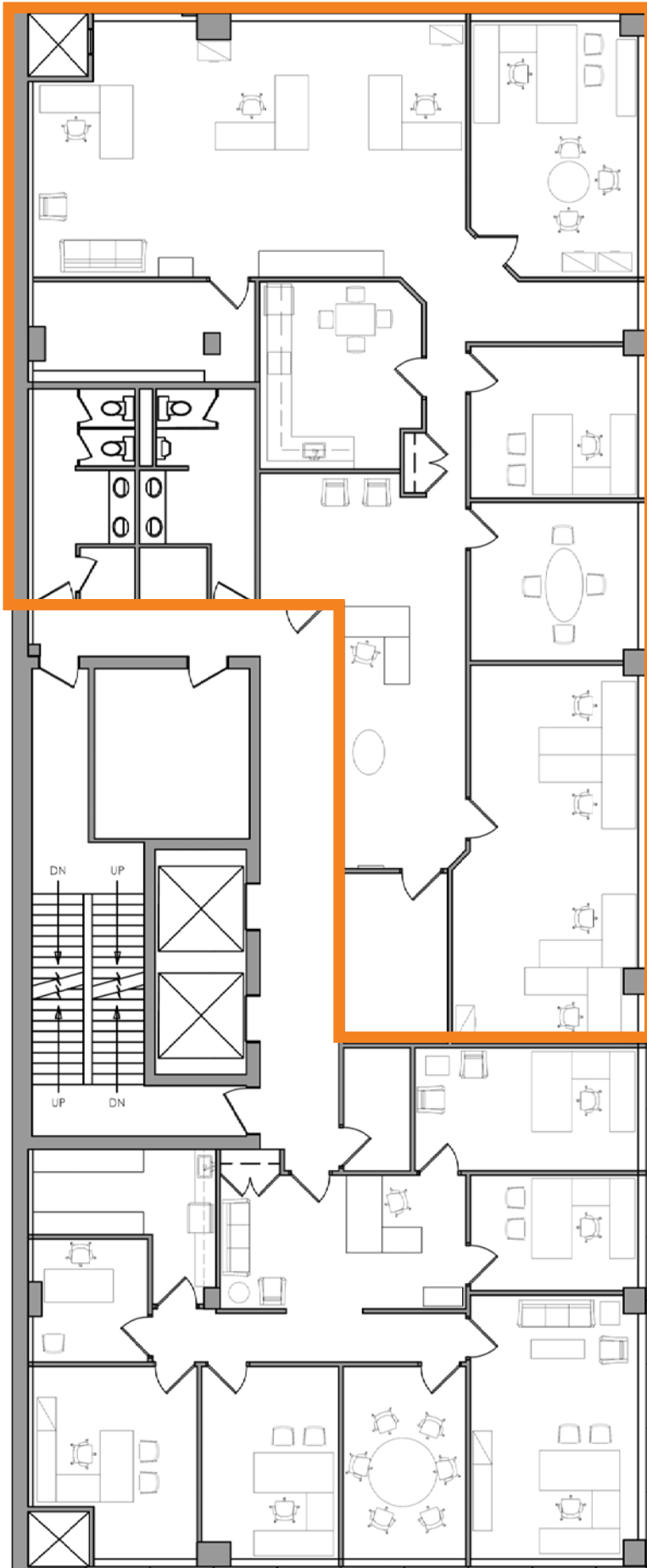
Building Information

| | |
|--------------------------------|-----------------------------|
| Address: | 900 Sixth Avenue SW |
| Year of Completion: | 1980 |
| Number of Floors: | 10 |
| Rentable Area: | 52,000 sf |
| Average Floor plate: | 5,625 sf |
| Landlord/ Building Manager: | Amhurst Property Management |

Features & Amenities

- Exposure to an abundance of natural light
- Full floor opportunity
- Furniture is available
- Walking distance to Bow River pathway system
- Half a block to Plus 15 access
- Two blocks to LRT

Edinburgh Place

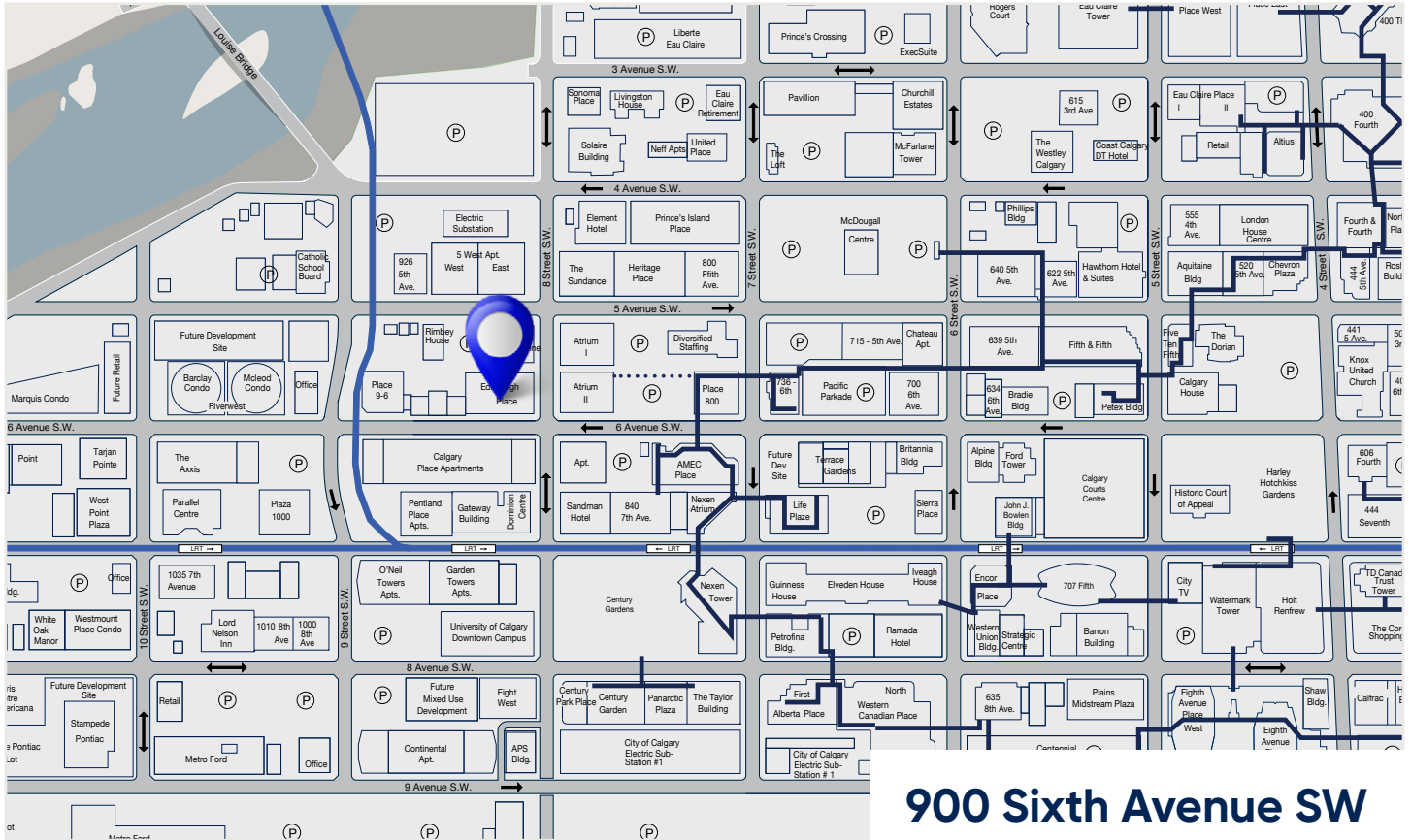


3rd Floor 3,952 sf

- 2 perimeter offices
- 2 large open areas for workstations
- Meeting room
- Reception
- Kitchen/staff room
- Storage/filing



Edinburgh Place



900 Sixth Avenue SW



Agent Information

Damon Harmon, CPA, CGA
403.875.3133
dharmon@cresa.com

Saige Clarke
587.438.2109
sclarke@cresa.com

Cresa

324 - 8 Avenue SW, Suite 1550 | Calgary, AB T2P 2Z2 | 403.571.8080 cresa.com

Even though obtained from sources deemed reliable, no warranty or representation, express or implied, is made as to the accuracy of the information herein, and it is subject to errors, omissions, change of price, rental or other conditions, withdrawal without notice, and to any special listing conditions imposed by our principals.

