

For Lease

**10070 King George Boulevard
Surrey, BC**

Opportunity to lease in the heart of central Surrey with direct exposure along King George Boulevard.



Nicolas Bilodeau, Senior Vice President
604 647 1336
nicolas.bilodeau@avisonyoung.com

**AVISON
YOUNG**

Property details

BUILDING SIZE

10,000 sf (approximately)

BUILDING OPERATING COSTS/TAXES (2023 ESTIMATE)

10070 King George Boulevard
\$22.22 psf/annum

10055 Whalley Boulevard
\$15.69 psf/annum

LEASE RATE

Contact listing agents

PARKING


\$55 + taxes / surface random stall


\$70 + taxes / reserved underground stall

Location


Town Square is located mid-block between 100th Avenue and 102nd Avenue on the east side of King George Boulevard in central Surrey. Central City Shopping Centre, the second largest mall in Surrey, is directly across the street offering over 140 shops, restaurants, and services. Additionally, Surrey Memorial Hospital is located just a short three-minute drive away at 96th Avenue and King George Boulevard.

Amenities

 Proximity to Surrey Central Skytrain Station providing easy access to other municipalities across Metro Vancouver

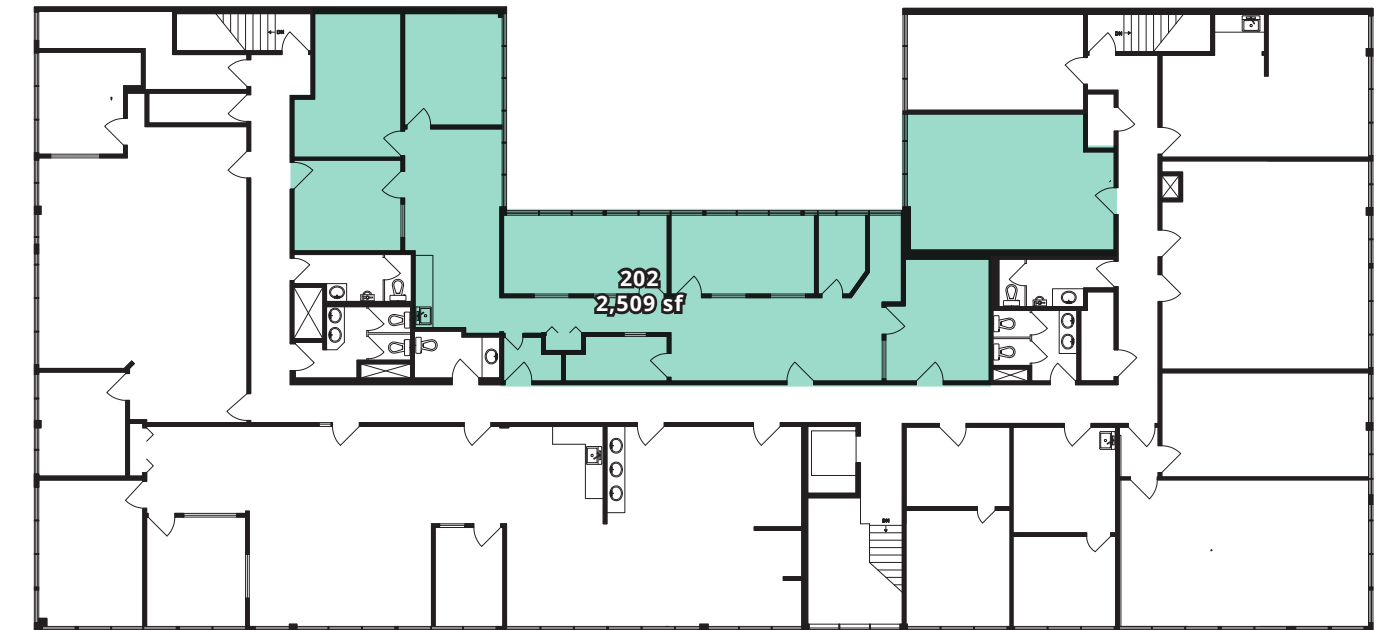
 Five-minute walk to Holland Park

 Numerous restaurants, banks, coffee shops, and shopping retailers nearby

 Convenient access to the proposed South Fraser LRT line

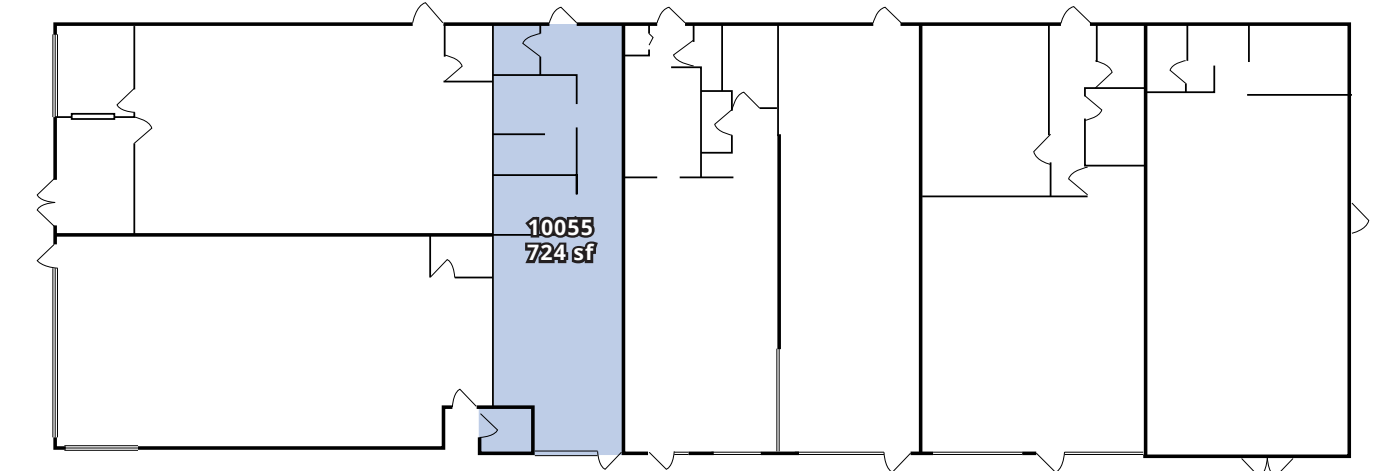
Floor plans

10070 KING GEORGE BOULEVARD



| Suite # | Total (sf) | Availability | Description |
|---------|------------|--------------|---|
| 202 | 2,509 sf | Immediately | Multiple offices/meeting rooms, kitchenette and open area |

10055 WHALLEY BOULEVARD



| Suite # | Total (sf) | Availability | Description |
|---------|------------|--------------|-------------|
| 1055 | 724 sf | Immediately | Retail unit |





Contact us for more information

Nicolas Bilodeau, Senior Vice President
604 647 1336
nicolas.bilodeau@avisonyoung.com



#2900-1055 West Georgia Street
P.O. Box 11109 Royal Centre
Vancouver, BC V6E 3P3, Canada

avisonyoung.com